

Turning Demographic Comparison

Session Name: Volusia Final Results Where Work Demo.tpz

Created: 7/3/2007 3:24 PM

1.) How does it feel to get up to attend an event on a Saturday morning? Terrific

	Terrific	OK	Fair	Poor	Are you kidding me?	Total
Volusia County	22	15	5	5	50	97
Orange County	0	0	0	0	1	1
Seminole County	0	1	1	0	1	3
Brevard County	0	0	0	0	0	0
Flagler County	0	1	0	0	0	1
Lake County	0	0	0	0	0	0
Osceola County	0	0	0	0	0	0
Duval County	0	0	0	0	0	0
Other	1	2	1	0	4	8

2.) What is your age?

	20-30	31-40	41-50	51-60	61-70	71-80	81-90	Over 90	Total
Volusia County	6	11	23	35	21	2	1	1	100
Orange County	0	0	1	0	0	0	0	0	1
Seminole County	0	0	1	2	0	0	0	0	3
Brevard County	0	0	0	0	0	0	0	0	0
Flagler County	0	0	0	0	1	0	0	0	1
Lake County	0	0	0	0	0	0	0	0	0
Osceola County	0	0	0	0	0	0	0	0	0
Duval County	0	0	0	0	0	0	0	0	0
Other	0	0	1	3	4	0	0	0	8

3.) How long have you lived in Volusia County?

	Non-resident	Less than 1 Year	1-2 Years	3-5 Years	6-10 Years	11-20 Years	20+ Years	Total
Volusia County	2	3	2	8	12	23	51	101
Orange County	0	0	0	0	0	0	0	0
Seminole County	0	0	0	1	0	0	2	3
Brevard County	0	0	0	0	0	0	0	0
Flagler County	1	0	0	0	0	0	0	1
Lake County	0	0	0	0	0	0	0	0
Osceola County	0	0	0	0	0	0	0	0
Duval County	0	0	0	0	0	0	0	0
Other	0	1	1	5	1	0	0	8

4.) What do you do for a living?

	Public Sector -Elected	Public Sector - Staff	Private Sector	Education	Community Based Organizatio	Other	Retired	Total
Volusia County	20	36	27	7	7	3	3	103
Orange County	0	0	1	0	0	0	0	1
Seminole County	0	1	1	1	0	1	0	4
Brevard County	0	0	0	0	0	0	0	0
Flagler County	0	0	1	0	0	0	0	1
Lake County	0	0	0	0	0	0	0	0
Osceola County	0	0	0	0	0	0	0	0
Duval County	0	0	0	0	0	0	0	0
Other	0	0	1	0	0	1	6	8

5.) Annual Income?

	Less than 25,000	25-50,000	51-75,000	76-100,000	101-125,000	126-150,000	Above 150,000	Total
Volusia County	5	17	16	17	18	11	17	101
Orange County	0	1	0	0	0	0	0	1
Seminole County	0	0	1	0	1	0	1	3
Brevard County	0	0	0	0	0	0	0	0
Flagler County	0	0	0	0	0	0	1	1
Lake County	0	0	0	0	0	0	0	0
Osceola County	0	0	0	0	0	0	0	0
Duval County	0	0	0	0	0	0	0	0
Other	1	2	2	1	0	1	1	8

6.) Where do you work?

	Volusia County	Orange County	Seminole County	Brevard County	Flagler County	Lake County	Osceola County	Duval County	Other	Total
Volusia County	109	0	0	0	0	0	0	0	0	109
Orange County	0	1	0	0	0	0	0	0	0	1
Seminole County	0	0	4	0	0	0	0	0	0	4
Brevard County	0	0	0	0	0	0	0	0	0	0
Flagler County	0	0	0	0	1	0	0	0	0	1
Lake County	0	0	0	0	0	0	0	0	0	0
Osceola County	0	0	0	0	0	0	0	0	0	0
Duval County	0	0	0	0	0	0	0	0	0	0
Other	0	0	0	0	0	0	0	0	8	8

7.) How long does it take you to get to work?

	5-10 minutes	11-15 minutes	16-20 minutes	21-25 minutes	26-30 minutes	31-45 minutes	46-60 minutes	60-75 minutes	ABOVE 75 minute	Total
Volusia County	31	16	11	11	6	14	3	1	0	93
Orange County	0	1	0	0	0	0	0	0	0	1
Seminole County	0	1	1	0	1	1	0	0	0	4
Brevard County	0	0	0	0	0	0	0	0	0	0
Flagler County	0	1	0	0	0	0	0	0	0	1
Lake County	0	0	0	0	0	0	0	0	0	0
Osceola County	0	0	0	0	0	0	0	0	0	0
Duval County	0	0	0	0	0	0	0	0	0	0
Other	0	0	1	0	0	0	0	0	0	1

8.) What is the population of the 7 County Central Florida Region?

	2.5 million	3.5 million	4.5 million	5.5 million	Total
Volusia County	7	30	30	24	91
Orange County	0	0	0	0	0
Seminole County	0	3	0	1	4
Brevard County	0	0	0	0	0
Flagler County	0	0	0	0	0
Lake County	0	0	0	0	0
Osceola County	0	0	0	0	0
Duval County	0	0	0	0	0
Other	1	0	5	0	6

9.) What is the projected population of Central Florida in 2020?

	2.8 million	3.8 million	4.8 million	5.8 million	Total
Volusia County	0	1	44	53	98
Orange County	0	0	0	1	1
Seminole County	0	0	3	1	4
Brevard County	0	0	0	0	0
Flagler County	0	0	1	0	1
Lake County	0	0	0	0	0
Osceola County	0	0	0	0	0
Duval County	0	0	0	0	0
Other	0	0	3	2	5

10.) What is the projected population of Central Florida in 2050?

	3.1 million	5.1 million	7.1 million	9.1 million	Total
Volusia County	1	11	72	14	98
Orange County	0	0	1	0	1
Seminole County	0	1	2	1	4
Brevard County	0	0	0	0	0
Flagler County	0	0	1	0	1
Lake County	0	0	0	0	0
Osceola County	0	0	0	0	0
Duval County	0	0	0	0	0
Other	1	1	5	1	8

11.) Why are you here – Best Answer?

	I care about the future of my neighborhood	I care about protecting the environment	I care about how we grow as a county	I care about how we grow in relation to the region	I want our county to be more economically competitive	I want to network with leaders and members of my community	I care about education	Other	Total
Volusia County	9	21	44	14	6	1	1	11	107
Orange County	0	0	0	1	0	0	0	0	1
Seminole County	0	2	0	0	1	0	1	0	4
Brevard County	0	0	0	0	0	0	0	0	0
Flagler County	0	0	0	1	0	0	0	0	1
Lake County	0	0	0	0	0	0	0	0	0
Osceola County	0	0	0	0	0	0	0	0	0
Duval County	0	0	0	0	0	0	0	0	0
Other	0	3	2	1	1	1	0	0	8

12.) How informed am I about myregion.org? Scale of 1 to 5, 5 well informed and 1 know almost nothing

	Know almost nothing	Little knowledge	Moderate knowledge	Well informed	Total
Volusia County	16	26	31	29	102
Orange County	0	0	0	1	1
Seminole County	1	1	2	0	4
Brevard County	0	0	0	0	0
Flagler County	0	0	1	0	1
Lake County	0	0	0	0	0
Osceola County	0	0	0	0	0
Duval County	0	0	0	0	0
Other	3	1	3	1	8

13.) How informed am I about growth planning and priorities in Volusia?

	Know almost nothing	Little knowledge	Moderate knowledge	Well informed	Total
Volusia County	1	17	37	45	100
Orange County	0	0	0	0	0
Seminole County	0	2	1	1	4
Brevard County	0	0	0	0	0
Flagler County	0	0	0	1	1
Lake County	0	0	0	0	0
Osceola County	0	0	0	0	0
Duval County	0	0	0	0	0
Other	1	3	2	2	8

14.) Do you support minimum environmental standards countywide?

	Yes	No	Undecided	Uninformed	Total
Volusia County	85	9	4	4	102
Orange County	1	0	0	0	1
Seminole County	4	0	0	0	4
Brevard County	0	0	0	0	0
Flagler County	1	0	0	0	1
Lake County	0	0	0	0	0
Osceola County	0	0	0	0	0
Duval County	0	0	0	0	0
Other	5	0	0	2	7

15.) Do you believe protecting natural areas will benefit your quality of life?

	Yes	No	Undecided	Uninformed	Total
Volusia County	95	4	1	0	100
Orange County	1	0	0	0	1
Seminole County	4	0	0	0	4
Brevard County	0	0	0	0	0
Flagler County	1	0	0	0	1
Lake County	0	0	0	0	0
Osceola County	0	0	0	0	0
Duval County	0	0	0	0	0
Other	7	0	1	0	8

16.) Do you support smart growth tools such as transfer of development rights to protect rural and natural areas?

	Yes	No	Undecided	Uninformed	Total
Volusia County	65	8	15	7	95
Orange County	1	0	0	0	1
Seminole County	2	0	0	1	3
Brevard County	0	0	0	0	0
Flagler County	1	0	0	0	1
Lake County	0	0	0	0	0
Osceola County	0	0	0	0	0
Duval County	0	0	0	0	0
Other	3	2	1	1	7

17.) Re-poll: How long does it take you to get to work?

	0-5 minutes	5-10 minutes	minutes	minutes	minutes	26-30 minutes	minutes	minutes	minutes	Work	Total
Volusia County	20	21	12	12	7	4	9	4	1	2	92
Orange County	0	0	0	0	0	0	0	0	0	0	0
Seminole County	0	1	0	1	0	1	1	0	0	0	4
Brevard County	0	0	0	0	0	0	0	0	0	0	0
Flagler County	0	0	1	0	0	0	0	0	0	0	1
Lake County	0	0	0	0	0	0	0	0	0	0	0
Osceola County	0	0	0	0	0	0	0	0	0	0	0
Duval County	0	0	0	0	0	0	0	0	0	0	0
Other	0	0	0	0	0	0	0	0	0	4	4

18.) What is the population of Volusia County?

	390,000	490,000	590,000	690,000	Total
Volusia County	20	62	10	0	92
Orange County	0	0	0	0	0
Seminole County	1	1	0	0	2
Brevard County	0	0	0	0	0
Flagler County	0	1	0	0	1
Lake County	0	0	0	0	0
Osceola County	0	0	0	0	0
Duval County	0	0	0	0	0
Other	3	2	1	0	6

19.) What is the projected population of Volusia County in 2020?

	333,000	533,000	633,000	733,000	Total
Volusia County	0	26	57	10	93
Orange County	0	0	0	0	0
Seminole County	0	2	1	0	3
Brevard County	0	0	0	0	0
Flagler County	0	0	1	0	1
Lake County	0	0	0	0	0
Osceola County	0	0	0	0	0
Duval County	0	0	0	0	0
Other	0	1	2	2	5

20.) What is the projected population of Volusia County in 2050?

	574,000	674,000	774,000	874,000	Total
Volusia County	0	5	54	32	91
Orange County	0	0	0	0	0
Seminole County	0	1	1	2	4
Brevard County	0	0	0	0	0
Flagler County	0	0	0	1	1
Lake County	0	0	0	0	0
Osceola County	0	0	0	0	0
Duval County	0	0	0	0	0
Other	0	0	6	0	6

21.) Do you believe sustainable communities will support a strong local economy?

	Yes	No	Don't Know	Total
Volusia County	76	2	15	93
Orange County	0	0	0	0
Seminole County	4	0	0	4
Brevard County	0	0	0	0
Flagler County	0	0	0	0
Lake County	0	0	0	0
Osceola County	0	0	0	0
Duval County	0	0	0	0
Other	4	1	1	6

22.) How many days per month do you leave the borders of Volusia for commercial, educational, entertainment, healthcare or other activities?

	0	1-5	6-10	11-15	16-20	21-25	25-30	31 and up.	Total
Volusia County	11	54	16	4	0	2	1	4	92
Orange County	0	0	0	0	0	0	0	0	0
Seminole County	0	0	1	1	0	0	1	1	4
Brevard County	0	0	0	0	0	0	0	0	0
Flagler County	0	0	0	0	0	0	0	0	0
Lake County	0	0	0	0	0	0	0	0	0
Osceola County	0	0	0	0	0	0	0	0	0
Duval County	0	0	0	0	0	0	0	0	0
Other	0	4	0	1	0	0	0	0	5

23.) Where do you reside?

	Don't Reside in			Total
	East Volusia	West Volusia	Volusia	
Volusia County	59	33	3	95
Orange County	0	0	1	1
Seminole County	1	2	1	4
Brevard County	0	0	0	0
Flagler County	0	0	0	0
Lake County	0	0	0	0
Osceola County	0	0	0	0
Duval County	0	0	0	0
Other	1	5	1	7

24.) What is VCOG:

	Very Collegial	Vast Collection of	Volusia	Volusia	Total
	Operating Group	Gerontologists	Council of Governments	Community on Growth	
Volusia County	0	4	95	2	101
Orange County	0	0	1	0	1
Seminole County	0	0	4	0	4
Brevard County	0	0	0	0	0
Flagler County	0	0	0	0	0
Lake County	0	0	0	0	0
Osceola County	0	0	0	0	0
Duval County	0	0	0	0	0
Other	0	0	6	1	7

25.) Accelerating deployment of the right transportation technology will make a difference in achieving a sustainable future

	Yes	No	Unsure	Uninformed	Total
Volusia County	63	2	4	1	70
Orange County	0	0	0	0	0
Seminole County	2	0	1	0	3
Brevard County	0	0	0	0	0
Flagler County	0	0	0	0	0
Lake County	0	0	0	0	0
Osceola County	0	0	0	0	0
Duval County	0	0	0	0	0
Other	5	1	0	0	6

26.) Commuter rail is a vital component of our sustainable community

	Yes	No	Unsure	Uninformed	Total
Volusia County	58	7	7	0	72
Orange County	0	0	1	0	1
Seminole County	3	0	0	0	3
Brevard County	0	0	0	0	0
Flagler County	0	0	0	0	0
Lake County	0	0	0	0	0
Osceola County	0	0	0	0	0
Duval County	0	0	0	0	0
Other	5	1	1	0	7

27.) I understand how A & B operate and what scenarios they represent

	Yes	No	Unsure	Uninformed	Total
Volusia County	46	9	18	2	75
Orange County	0	0	0	0	0
Seminole County	0	0	3	0	3
Brevard County	0	0	0	0	0
Flagler County	0	0	0	0	0
Lake County	0	0	0	0	0
Osceola County	0	0	0	0	0
Duval County	0	0	0	0	0
Other	6	0	1	0	7

28.) Communicating the complexity of systems and infrastructure is our most serious barrier to success

	Yes	No	Unsure	Uninformed	Total
Volusia County	49	18	6	0	73
Orange County	1	0	0	0	1
Seminole County	2	1	0	0	3
Brevard County	0	0	0	0	0
Flagler County	0	0	0	0	0
Lake County	0	0	0	0	0
Osceola County	0	0	0	0	0
Duval County	0	0	0	0	0
Other	5	0	2	0	7

29.) We can't achieve our vision without culture change

	Agree	Disagree	Unsure	Uninformed	Total
Volusia County	68	5	3	0	76
Orange County	1	0	0	0	1
Seminole County	3	0	0	0	3
Brevard County	0	0	0	0	0
Flagler County	0	0	0	0	0
Lake County	0	0	0	0	0
Osceola County	0	0	0	0	0
Duval County	0	0	0	0	0
Other	5	1	0	0	6

30.) Achieving our vision requires:

	World class K-12 performance	Best in nation	Best in Florida	Best in region	Stay the same	Not a factor	Total
Volusia County	21	15	15	17	1	7	76
Orange County	0	0	0	0	0	0	0
Seminole County	1	0	0	2	0	0	3
Brevard County	0	0	0	0	0	0	0
Flagler County	0	0	0	0	0	0	0
Lake County	0	0	0	0	0	0	0
Osceola County	0	0	0	0	0	0	0
Duval County	0	0	0	0	0	0	0
Other	0	1	3	1	0	2	7

31.) I want to keep up with this effort

	Yes	No	Unsure	Uninformed	Total
Volusia County	71	2	0	0	73
Orange County	1	0	0	0	1
Seminole County	3	0	0	0	3
Brevard County	0	0	0	0	0
Flagler County	0	0	0	0	0
Lake County	0	0	0	0	0
Osceola County	0	0	0	0	0
Duval County	0	0	0	0	0
Other	5	0	0	0	5

32.) What is the most important and credible message for your neighbor?

	We can	Our	Our	Other	Our region	State policy	Other	Total
Volusia County	0	29	8	11	9	0	16	73
Orange County	0	1	0	0	0	0	0	1
Seminole County	0	2	0	0	0	1	0	3
Brevard County	0	0	0	0	0	0	0	0
Flagler County	0	0	0	0	0	0	0	0
Lake County	0	0	0	0	0	0	0	0
Osceola County	0	0	0	0	0	0	0	0
Duval County	0	0	0	0	0	0	0	0
Other	0	2	2	1	2	0	0	7

33.) Would you pay the extra money to bypass congestion?

	Yes	No	Unsure	Uninformed	Total
Volusia County	54	11	8	0	73
Orange County	1	0	0	0	1
Seminole County	3	0	0	0	3
Brevard County	0	0	0	0	0
Flagler County	0	0	0	0	0
Lake County	0	0	0	0	0
Osceola County	0	0	0	0	0
Duval County	0	0	0	0	0
Other	6	1	0	0	7

34.) How informed am I about myregion.org? Scale of 1 to 4, 4 well informed and 1 know almost nothing

	Know almost nothing	Little knowledge	Moderate knowledge	Well informed	Total
Volusia County	4	8	32	29	73
Orange County	0	0	0	1	1
Seminole County	0	1	1	1	3
Brevard County	0	0	0	0	0
Flagler County	0	0	0	0	0
Lake County	0	0	0	0	0
Osceola County	0	0	0	0	0
Duval County	0	0	0	0	0
Other	0	0	5	2	7

35.) How informed am I about growth planning and priorities in Volusia?

	Know almost nothing	Little knowledge	Moderate knowledge	Well informed	Total
Volusia County	0	1	30	40	71
Orange County	0	0	1	0	1
Seminole County	0	1	1	1	3
Brevard County	0	0	0	0	0
Flagler County	0	0	0	0	0
Lake County	0	0	0	0	0
Osceola County	0	0	0	0	0
Duval County	0	0	0	0	0
Other	0	0	3	4	7

36.) Do you support minimum environmental standards countywide?

	Yes	No	Undecided	Uninformed	Total
Volusia County	65	4	2	0	71
Orange County	1	0	0	0	1
Seminole County	3	0	0	0	3
Brevard County	0	0	0	0	0
Flagler County	0	0	0	0	0
Lake County	0	0	0	0	0
Osceola County	0	0	0	0	0
Duval County	0	0	0	0	0
Other	5	0	1	0	6

37.) Do you believe protecting natural areas will benefit your quality of life?

	Yes	No	Undecided	Uninformed	Total
Volusia County	71	2	0	0	73
Orange County	1	0	0	0	1
Seminole County	3	0	0	0	3
Brevard County	0	0	0	0	0
Flagler County	0	0	0	0	0
Lake County	0	0	0	0	0
Osceola County	0	0	0	0	0
Duval County	0	0	0	0	0
Other	7	0	0	0	7

38.) Do you support smart growth tools such as transfer of development rights to protect rural and natural areas?

	Yes	No	Undecided	Uninformed	Total
Volusia County	52	7	13	1	73
Orange County	0	0	0	0	0
Seminole County	2	0	1	0	3
Brevard County	0	0	0	0	0
Flagler County	0	0	0	0	0
Lake County	0	0	0	0	0
Osceola County	0	0	0	0	0
Duval County	0	0	0	0	0
Other	5	0	2	0	7

39.) How did you hear about this Summit?

	Radio	TV	Internet	Print Media – Newspaper	Word of Mouth or Phone	Written Invitation	Information or Notice by Association, Group, Not- for-profit, or Coalition	Other	Total
Volusia County	1	0	14	6	5	13	24	3	66
Orange County	0	0	0	0	1	0	0	0	1
Seminole County	0	0	1	0	2	0	0	0	3
Brevard County	0	0	0	0	0	0	0	0	0
Flagler County	0	0	0	0	0	0	0	0	0
Lake County	0	0	0	0	0	0	0	0	0
Osceola County	0	0	0	0	0	0	0	0	0
Duval County	0	0	0	0	0	0	0	0	0
Other	0	0	2	1	2	0	2	0	7

40.) How did you hear about this Summit?

	Radio	TV	Internet	Print Media – Newspaper	Word of Mouth or Phone	Written Invitation	Information or Notice by Association, Group, Not-for-profit, or Coalition	Other	Total
Volusia County	1	0	34	6	4	4	17	5	71
Orange County	0	0	1	0	0	0	0	0	1
Seminole County	0	0	2	0	1	0	0	0	3
Brevard County	0	0	0	0	0	0	0	0	0
Flagler County	0	0	0	0	0	0	0	0	0
Lake County	0	0	0	0	0	0	0	0	0
Osceola County	0	0	0	0	0	0	0	0	0
Duval County	0	0	0	0	0	0	0	0	0
Other	0	0	4	1	2	0	0	0	7

41.) I Feel I have improved access to data and information going forward

	Yes	No	no change	unsure	Total
Volusia County	60	2	9	2	73
Orange County	1	0	0	0	1
Seminole County	2	0	1	0	3
Brevard County	0	0	0	0	0
Flagler County	0	0	0	0	0
Lake County	0	0	0	0	0
Osceola County	0	0	0	0	0
Duval County	0	0	0	0	0
Other	7	0	0	0	7

42.) I think the best way to keep up with trends, ideas, and developments regarding Volusia’s growth is:

	Through a central web site	general media – Print media	Radio/TV	through VCOG	Mega Summits	LinkedIn newsletter	management, and myreg	Other	Total		
Volusia County	16	3	6	0	2	9	1	7	2	0	46
Orange County	0	0	0	0	0	0	0	1	0	0	1
Seminole County	1	1	0	0	0	0	0	0	0	0	2
Brevard County	0	0	0	0	0	0	0	0	0	0	0
Flagler County	0	0	0	0	0	0	0	0	0	0	0
Lake County	0	0	0	0	0	0	0	0	0	0	0
Osceola County	0	0	0	0	0	0	0	0	0	0	0
Duval County	0	0	0	0	0	0	0	0	0	0	0
Other	2	0	0	0	0	1	0	0	0	0	3

43.) I think the best way to keep up with trends, ideas, and developments regarding Volusia's growth is:

	Through a central web site or portal	Through general media – electronic	Print media	Radio/TV	Through VCOG Meetings	Through Summits like this	Through Written newsletters and notices	Through all partner, government, and organization al web sites	Through myregion.org	Other	Total
Volusia County	19	13	6	0	3	11	2	6	2	0	62
Orange County	0	0	0	0	0	0	0	1	0	0	1
Seminole County	0	1	0	0	0	0	0	1	0	0	2
Brevard County	0	0	0	0	0	0	0	0	0	0	0
Flagler County	0	0	0	0	0	0	0	0	0	0	0
Lake County	0	0	0	0	0	0	0	0	0	0	0
Osceola County	0	0	0	0	0	0	0	0	0	0	0
Duval County	0	0	0	0	0	0	0	0	0	0	0
Other	2	0	1	0	0	1	0	1	0	0	5

44.) For me personally - The data, information, and updates provided in this summit were:

	Of no use	Of some use	Useful	Very useful	Total
Volusia County	2	13	31	25	71
Orange County	0	0	0	1	1
Seminole County	0	1	0	2	3
Brevard County	0	0	0	0	0
Flagler County	0	0	0	0	0
Lake County	0	0	0	0	0
Osceola County	0	0	0	0	0
Duval County	0	0	0	0	0
Other	0	0	2	5	7

45.) As a team, Speakers, panelists, and facilitators were:

	Poor	Fair	Good	Excellent	Total
Volusia County	1	2	35	34	72
Orange County	0	0	0	0	0
Seminole County	0	0	1	2	3
Brevard County	0	0	0	0	0
Flagler County	0	0	0	0	0
Lake County	0	0	0	0	0
Osceola County	0	0	0	0	0
Duval County	0	0	0	0	0
Other	0	0	1	5	6

46.) Workshops were:

	Poor	Fair	Good	Excellent	Total
Volusia County	0	9	38	23	70
Orange County	0	0	0	0	0
Seminole County	0	0	2	1	3
Brevard County	0	0	0	0	0
Flagler County	0	0	0	0	0
Lake County	0	0	0	0	0
Osceola County	0	0	0	0	0
Duval County	0	0	0	0	0
Other	0	0	3	4	7

47.) How did you hear about this Summit?

	Radio	TV	Internet Web site driven	Internet email from event	Internet email from colleagues	Print Media – Newspaper	Word of Mouth or Phone	Written Invitation	Recommendation or Notice by Association, Group, Not-for-profit, or Coalition	Other	Total
Volusia County	2	0	2	23	14	6	5	3	13	4	72
Orange County	0	0	0	0	1	0	0	0	0	0	1
Seminole County	0	0	0	0	2	0	1	0	0	0	3
Brevard County	0	0	0	0	0	0	0	0	0	0	0
Flagler County	0	0	0	0	0	0	0	0	0	0	0
Lake County	0	0	0	0	0	0	0	0	0	0	0
Osceola County	0	0	0	0	0	0	0	0	0	0	0
Duval County	0	0	0	0	0	0	0	0	0	0	0
Other	0	0	0	4	0	1	2	0	0	0	7

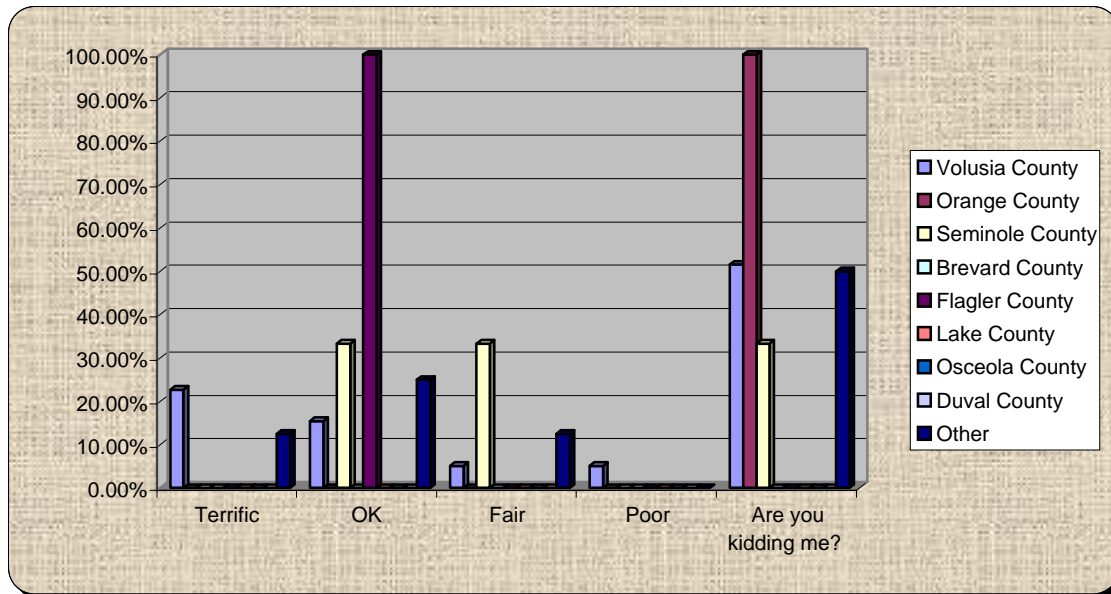
Turning Graphical Comparison

Session Name: Volusia Final Results Where Work Demo.tpz

Created: 7/3/2007 3:25 PM

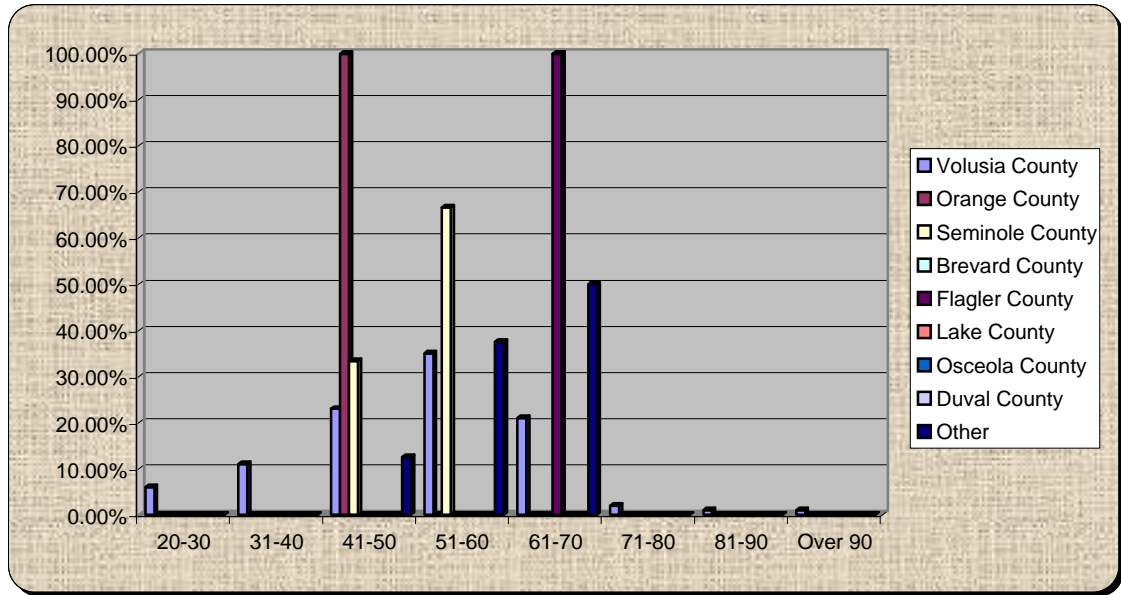
1.) How does it feel to get up to attend an event on a Saturday morning? Terrific

	Terrific	OK	Fair	Poor	Are you kidding me?
Volusia County	22.68%	15.46%	5.15%	5.15%	51.55%
Orange County	0.00%	0.00%	0.00%	0.00%	100.00%
Seminole County	0.00%	33.33%	33.33%	0.00%	33.33%
Brevard County	0%	0%	0%	0%	0%
Flagler County	0.00%	100.00%	0.00%	0.00%	0.00%
Lake County	0%	0%	0%	0%	0%
Osceola County	0%	0%	0%	0%	0%
Duval County	0%	0%	0%	0%	0%
Other	12.50%	25.00%	12.50%	0.00%	50.00%



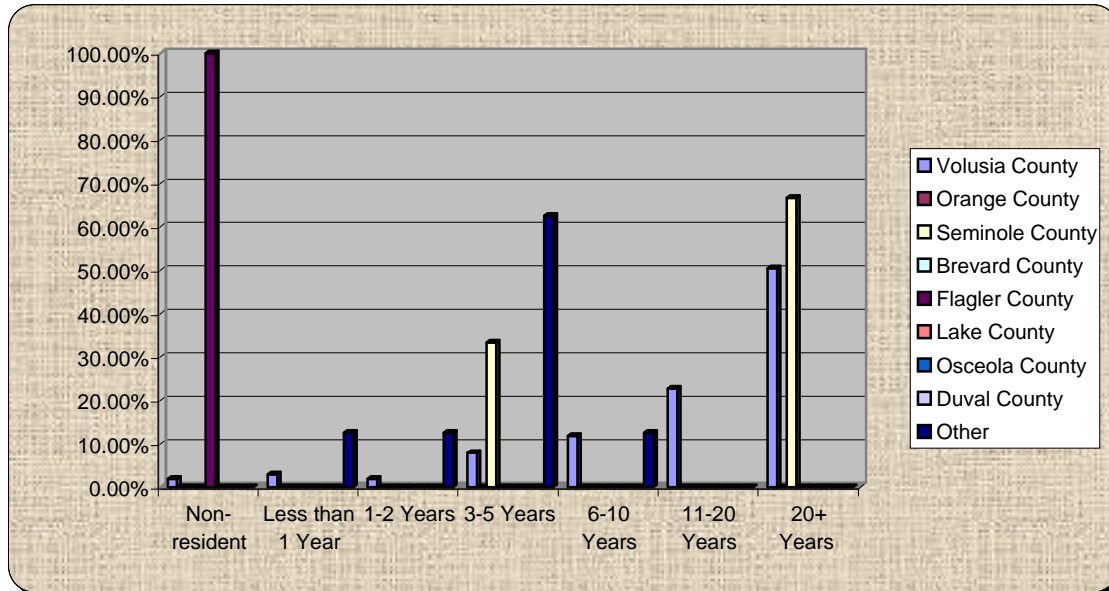
2.) What is your age?

	20-30	31-40	41-50	51-60	61-70	71-80	81-90	Over 90
Volusia County	6.00%	11.00%	23.00%	35.00%	21.00%	2.00%	1.00%	1.00%
Orange County	0.00%	0.00%	100.00%	0.00%	0.00%	0.00%	0.00%	0.00%
Seminole County	0.00%	0.00%	33.33%	66.67%	0.00%	0.00%	0.00%	0.00%
Brevard County	0%	0%	0%	0%	0%	0%	0%	0%
Flagler County	0.00%	0.00%	0.00%	0.00%	100.00%	0.00%	0.00%	0.00%
Lake County	0%	0%	0%	0%	0%	0%	0%	0%
Osceola County	0%	0%	0%	0%	0%	0%	0%	0%
Duval County	0%	0%	0%	0%	0%	0%	0%	0%
Other	0.00%	0.00%	12.50%	37.50%	50.00%	0.00%	0.00%	0.00%



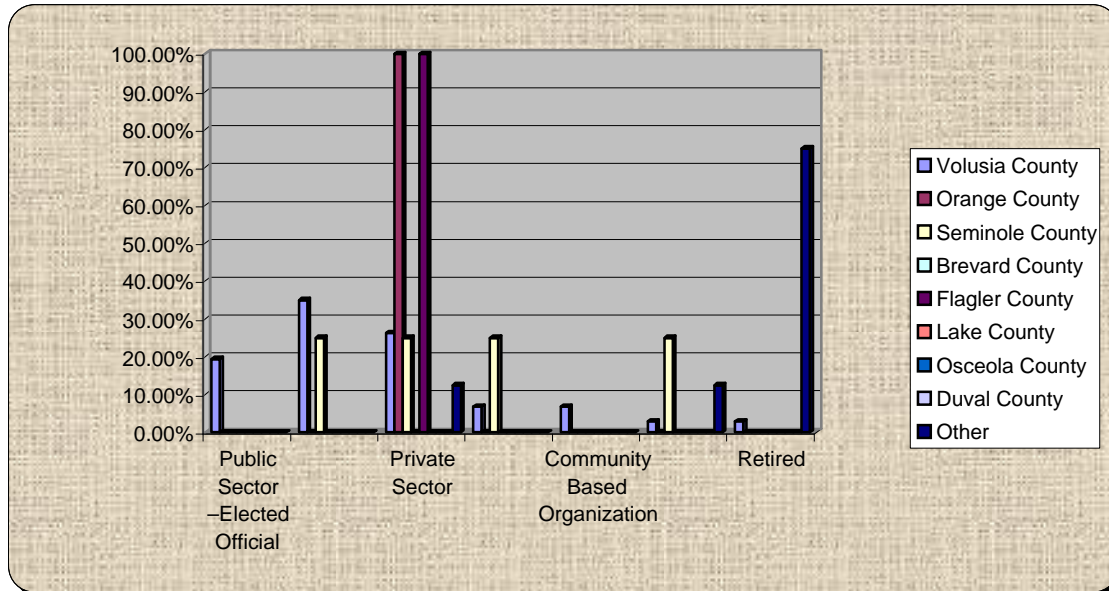
3.) How long have you lived in Volusia County?

	Non-resident	Year	1-2 Years	3-5 Years	6-10 Years	11-20 Years	20+ Years
Volusia County	1.98%	2.97%	1.98%	7.92%	11.88%	22.77%	50.50%
Orange County	0%	0%	0%	0%	0%	0%	0%
Seminole County	0.00%	0.00%	0.00%	33.33%	0.00%	0.00%	66.67%
Brevard County	0%	0%	0%	0%	0%	0%	0%
Flagler County	100.00%	0.00%	0.00%	0.00%	0.00%	0.00%	0.00%
Lake County	0%	0%	0%	0%	0%	0%	0%
Osceola County	0%	0%	0%	0%	0%	0%	0%
Duval County	0%	0%	0%	0%	0%	0%	0%
Other	0.00%	12.50%	12.50%	62.50%	12.50%	0.00%	0.00%



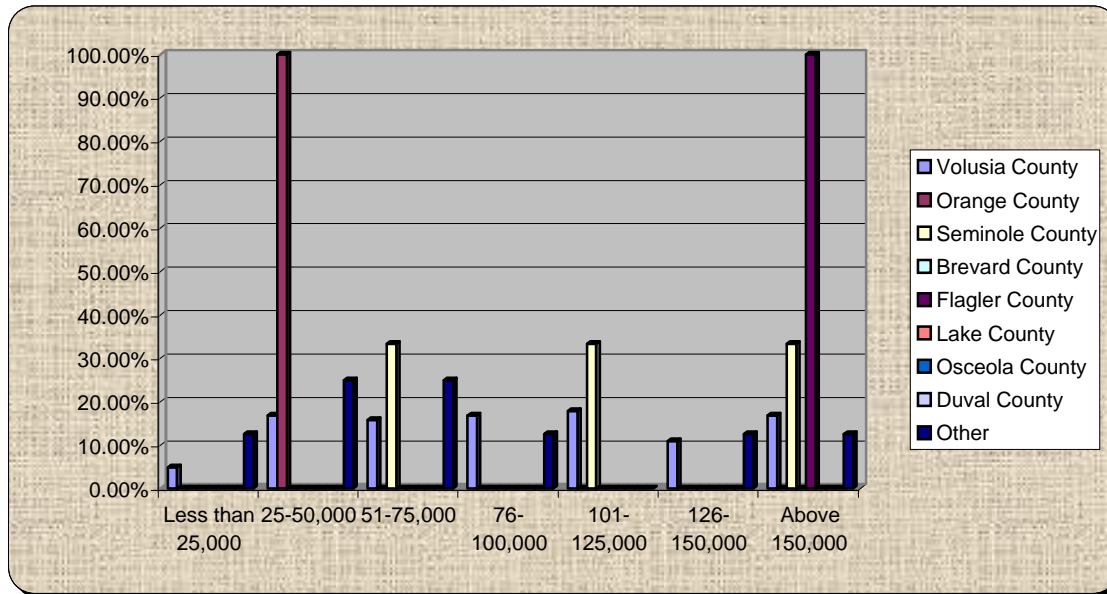
4.) What do you do for a living?

	-Elected	Staff	Private Sector	Education	Based	Other	Retired
Volusia County	19.42%	34.95%	26.21%	6.80%	6.80%	2.91%	2.91%
Orange County	0.00%	0.00%	100.00%	0.00%	0.00%	0.00%	0.00%
Seminole County	0.00%	25.00%	25.00%	25.00%	0.00%	25.00%	0.00%
Brevard County	0%	0%	0%	0%	0%	0%	0%
Flagler County	0.00%	0.00%	100.00%	0.00%	0.00%	0.00%	0.00%
Lake County	0%	0%	0%	0%	0%	0%	0%
Osceola County	0%	0%	0%	0%	0%	0%	0%
Duval County	0%	0%	0%	0%	0%	0%	0%
Other	0.00%	0.00%	12.50%	0.00%	0.00%	12.50%	75.00%



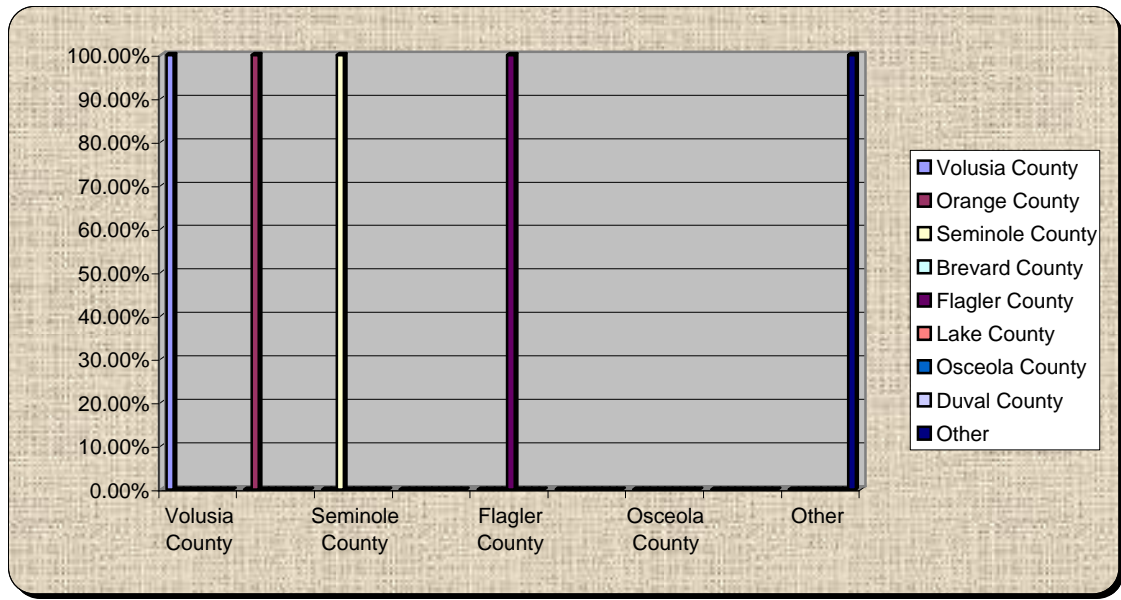
5.) Annual Income?

	Less than 25,000	25-50,000	51-75,000	76-100,000	101-125,000	126-150,000	Above 150,000
Volusia County	4.95%	16.83%	15.84%	16.83%	17.82%	10.89%	16.83%
Orange County	0.00%	100.00%	0.00%	0.00%	0.00%	0.00%	0.00%
Seminole County	0.00%	0.00%	33.33%	0.00%	33.33%	0.00%	33.33%
Brevard County	0%	0%	0%	0%	0%	0%	0%
Flagler County	0.00%	0.00%	0.00%	0.00%	0.00%	0.00%	100.00%
Lake County	0%	0%	0%	0%	0%	0%	0%
Osceola County	0%	0%	0%	0%	0%	0%	0%
Duval County	0%	0%	0%	0%	0%	0%	0%
Other	12.50%	25.00%	25.00%	12.50%	0.00%	12.50%	12.50%



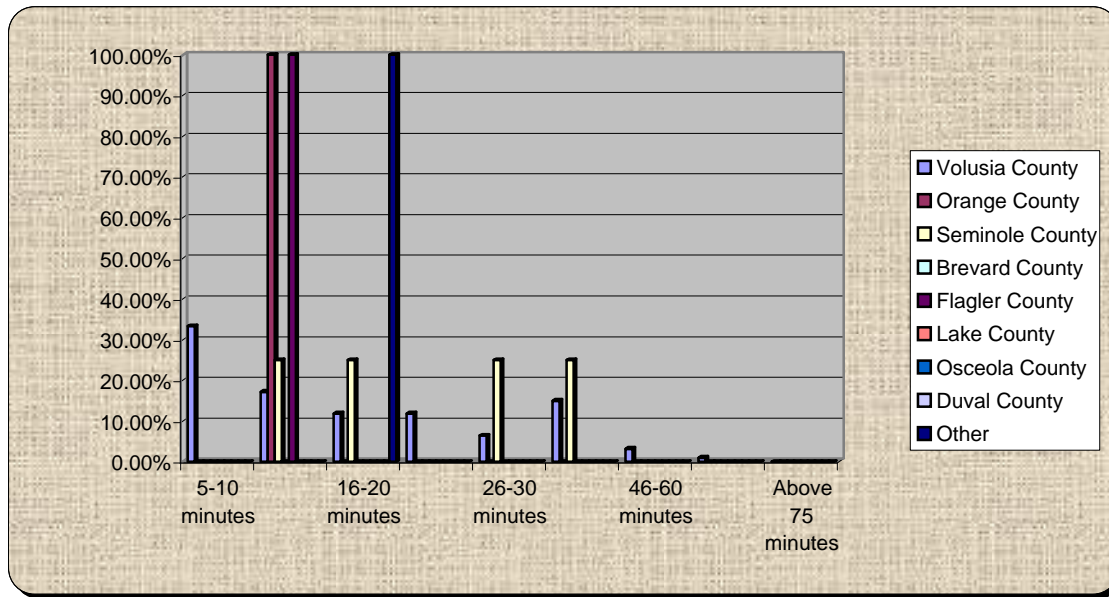
6.) Where do you work?

	Volusia County	Orange County	Seminole County	Brevard County	Flagler County	Lake County	Osceola County	Duval County	Other
Volusia County	100.00%	0.00%	0.00%	0.00%	0.00%	0.00%	0.00%	0.00%	0.00%
Orange County	0.00%	100.00%	0.00%	0.00%	0.00%	0.00%	0.00%	0.00%	0.00%
Seminole County	0.00%	0.00%	100.00%	0.00%	0.00%	0.00%	0.00%	0.00%	0.00%
Brevard County	0%	0%	0%	0%	0%	0%	0%	0%	0%
Flagler County	0.00%	0.00%	0.00%	0.00%	100.00%	0.00%	0.00%	0.00%	0.00%
Lake County	0%	0%	0%	0%	0%	0%	0%	0%	0%
Osceola County	0%	0%	0%	0%	0%	0%	0%	0%	0%
Duval County	0%	0%	0%	0%	0%	0%	0%	0%	0%
Other	0.00%	0.00%	0.00%	0.00%	0.00%	0.00%	0.00%	0.00%	100.00%



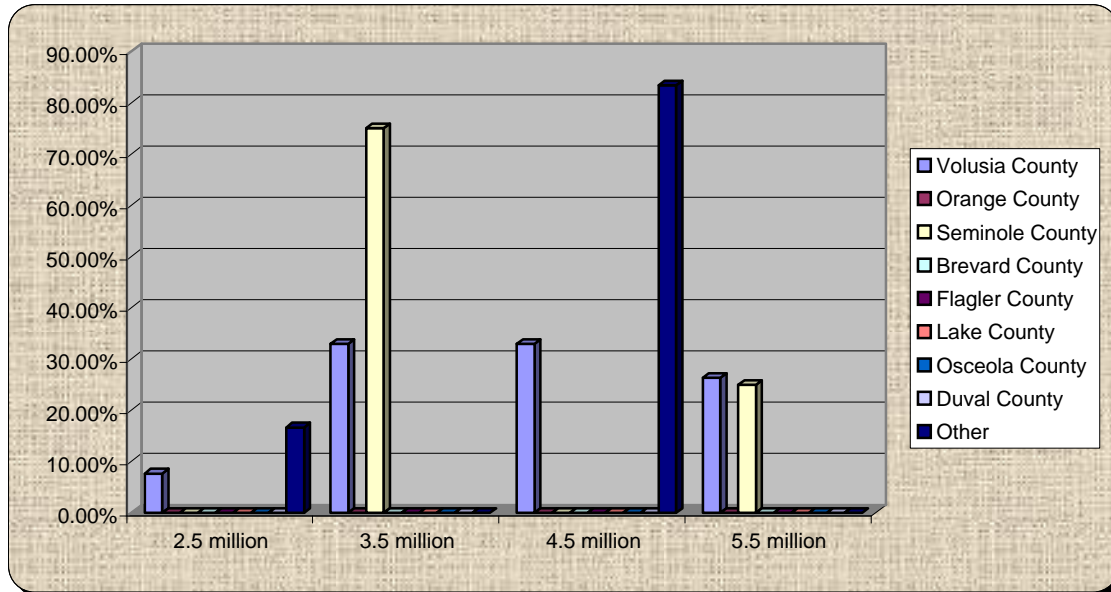
7.) How long does it take you to get to work?

	5-10 minutes	11-15 minutes	16-20 minutes	21-25 minutes	26-30 minutes	31-45 minutes	46-60 minutes	60-75 minutes	Above 75 minutes
Volusia County	33.33%	17.20%	11.83%	11.83%	6.45%	15.05%	3.23%	1.08%	0.00%
Orange County	0.00%	100.00%	0.00%	0.00%	0.00%	0.00%	0.00%	0.00%	0.00%
Seminole County	0.00%	25.00%	25.00%	0.00%	25.00%	25.00%	0.00%	0.00%	0.00%
Brevard County	0%	0%	0%	0%	0%	0%	0%	0%	0%
Flagler County	0.00%	100.00%	0.00%	0.00%	0.00%	0.00%	0.00%	0.00%	0.00%
Lake County	0%	0%	0%	0%	0%	0%	0%	0%	0%
Osceola County	0%	0%	0%	0%	0%	0%	0%	0%	0%
Duval County	0%	0%	0%	0%	0%	0%	0%	0%	0%
Other	0.00%	0.00%	100.00%	0.00%	0.00%	0.00%	0.00%	0.00%	0.00%



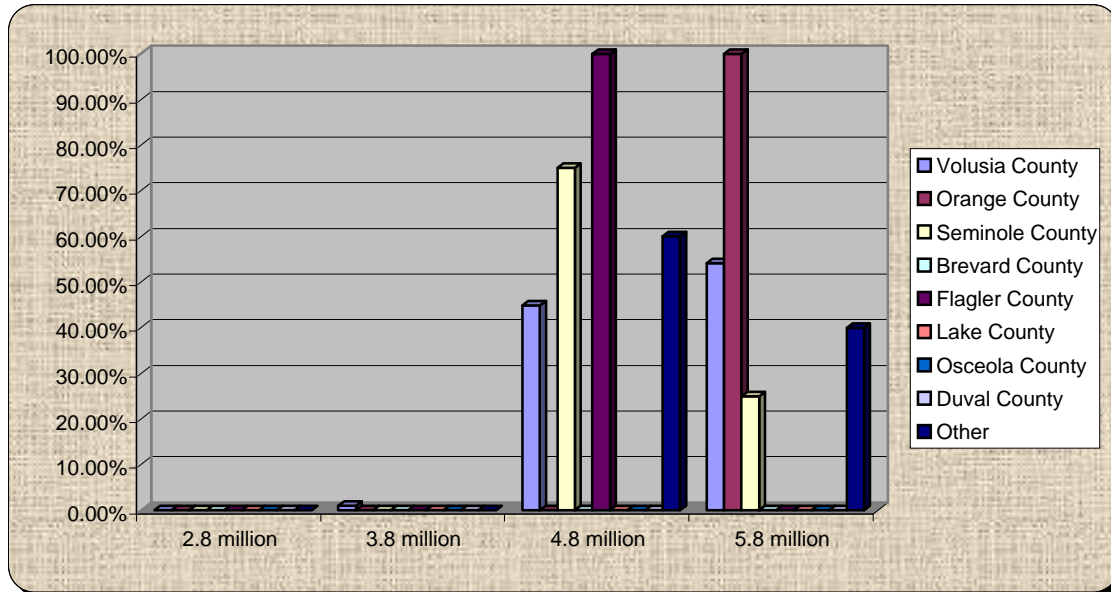
8.) What is the population of the 7 County Central Florida Region?

	2.5 million	3.5 million	4.5 million	5.5 million
Volusia County	7.69%	32.97%	32.97%	26.37%
Orange County	0%	0%	0%	0%
Seminole County	0.00%	75.00%	0.00%	25.00%
Brevard County	0%	0%	0%	0%
Flagler County	0%	0%	0%	0%
Lake County	0%	0%	0%	0%
Osceola County	0%	0%	0%	0%
Duval County	0%	0%	0%	0%
Other	16.67%	0.00%	83.33%	0.00%



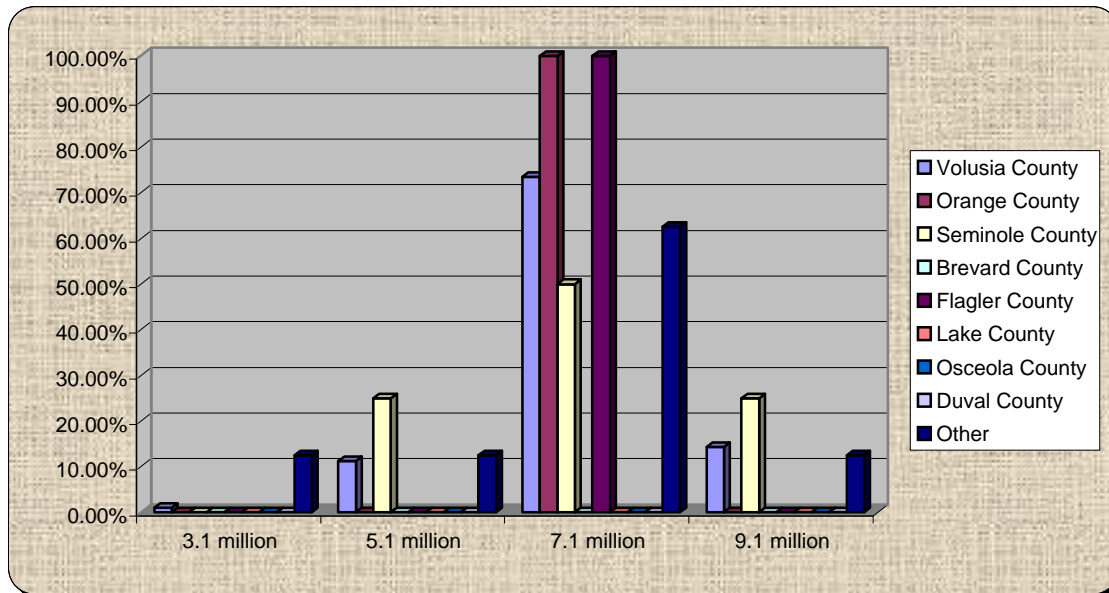
9.) What is the projected population of Central Florida in 2020?

	2.8 million	3.8 million	4.8 million	5.8 million
Volusia County	0.00%	1.02%	44.90%	54.08%
Orange County	0.00%	0.00%	0.00%	100.00%
Seminole County	0.00%	0.00%	75.00%	25.00%
Brevard County	0%	0%	0%	0%
Flagler County	0.00%	0.00%	100.00%	0.00%
Lake County	0%	0%	0%	0%
Osceola County	0%	0%	0%	0%
Duval County	0%	0%	0%	0%
Other	0.00%	0.00%	60.00%	40.00%



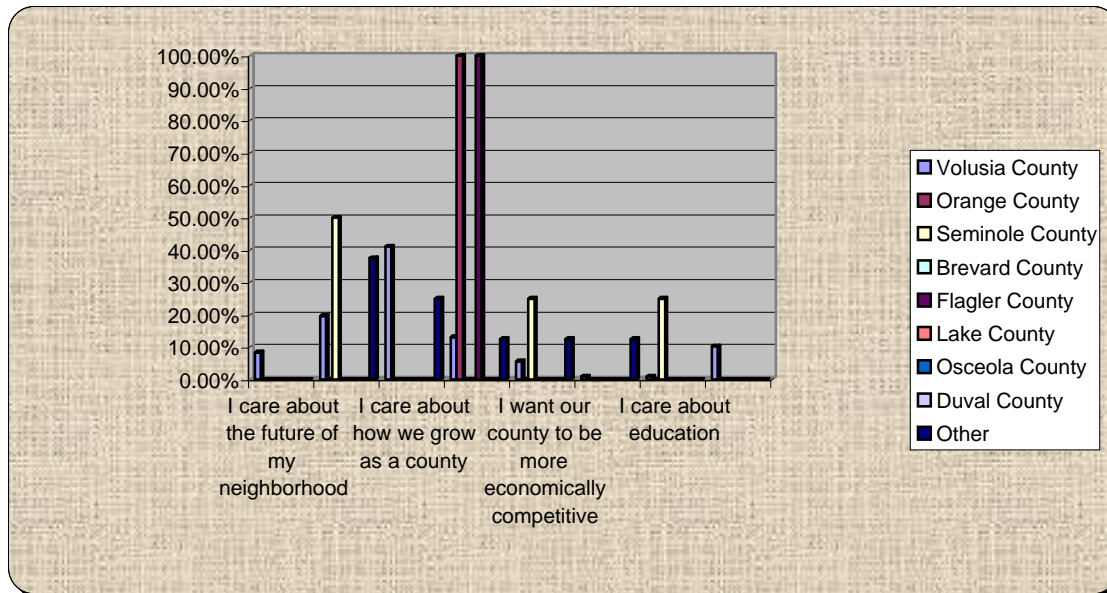
10.) What is the projected population of Central Florida in 2050?

	3.1 million	5.1 million	7.1 million	9.1 million
Volusia County	1.02%	11.22%	73.47%	14.29%
Orange County	0.00%	0.00%	100.00%	0.00%
Seminole County	0.00%	25.00%	50.00%	25.00%
Brevard County	0%	0%	0%	0%
Flagler County	0.00%	0.00%	100.00%	0.00%
Lake County	0%	0%	0%	0%
Osceola County	0%	0%	0%	0%
Duval County	0%	0%	0%	0%
Other	12.50%	12.50%	62.50%	12.50%



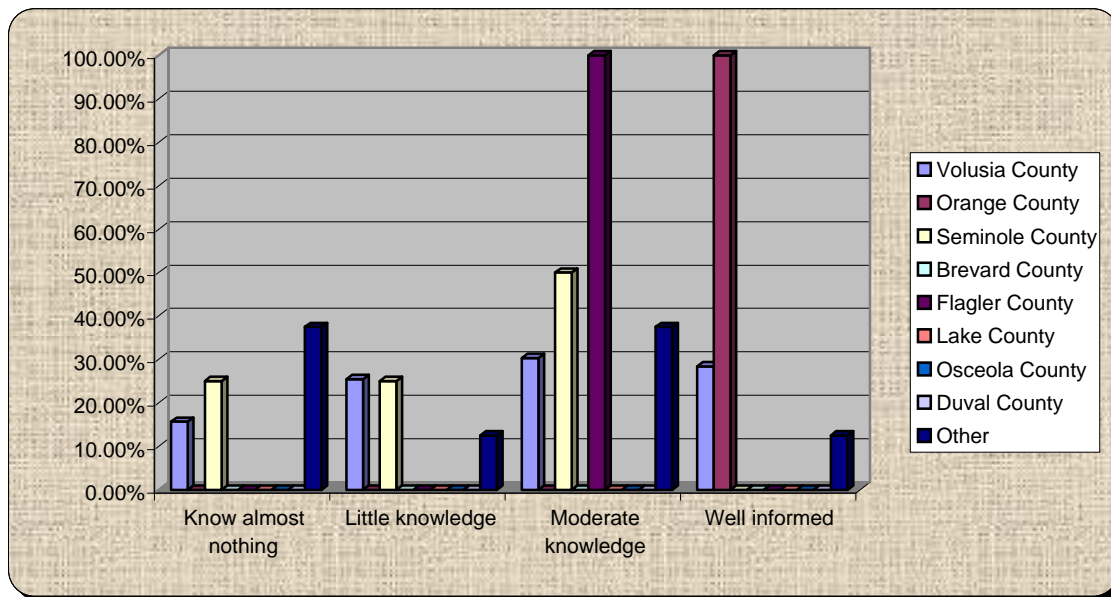
11.) Why are you here – Best Answer?

	I care about the future of my neighborhood	I care about protecting the environment	I care about how we grow as a county	I care about how we grow in relation to the region	I want our county to be more economically competitive	I want to network with leaders and members of my community	I care about education	Other
Volusia County	8.41%	19.63%	41.12%	13.08%	5.61%	0.93%	0.93%	10.28%
Orange County	0.00%	0.00%	0.00%	100.00%	0.00%	0.00%	0.00%	0.00%
Seminole County	0.00%	50.00%	0.00%	0.00%	25.00%	0.00%	25.00%	0.00%
Brevard County	0%	0%	0%	0%	0%	0%	0%	0%
Flagler County	0.00%	0.00%	0.00%	100.00%	0.00%	0.00%	0.00%	0.00%
Lake County	0%	0%	0%	0%	0%	0%	0%	0%
Osceola County	0%	0%	0%	0%	0%	0%	0%	0%
Duval County	0%	0%	0%	0%	0%	0%	0%	0%
Other	0.00%	37.50%	25.00%	12.50%	12.50%	12.50%	0.00%	0.00%



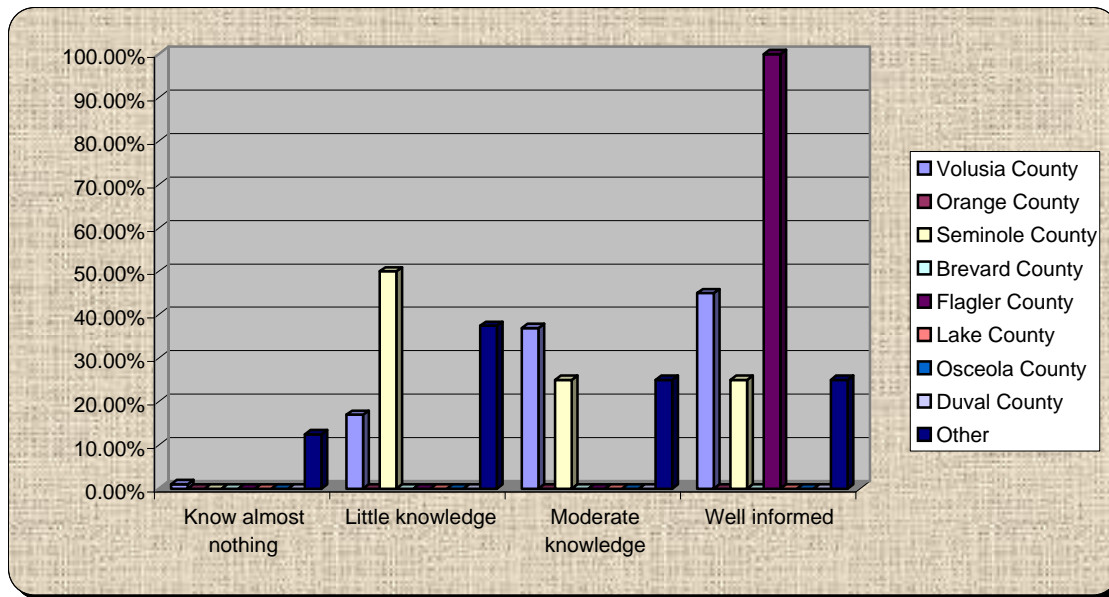
12.) How informed am I about myregion.org? Scale of 1 to 5, 5 well informed and 1 know almost nothing

	Know almost nothing	Little knowledge	Moderate knowledge	Well informed
Volusia County	15.69%	25.49%	30.39%	28.43%
Orange County	0.00%	0.00%	0.00%	100.00%
Seminole County	25.00%	25.00%	50.00%	0.00%
Brevard County	0%	0%	0%	0%
Flagler County	0.00%	0.00%	100.00%	0.00%
Lake County	0%	0%	0%	0%
Osceola County	0%	0%	0%	0%
Duval County	0%	0%	0%	0%
Other	37.50%	12.50%	37.50%	12.50%



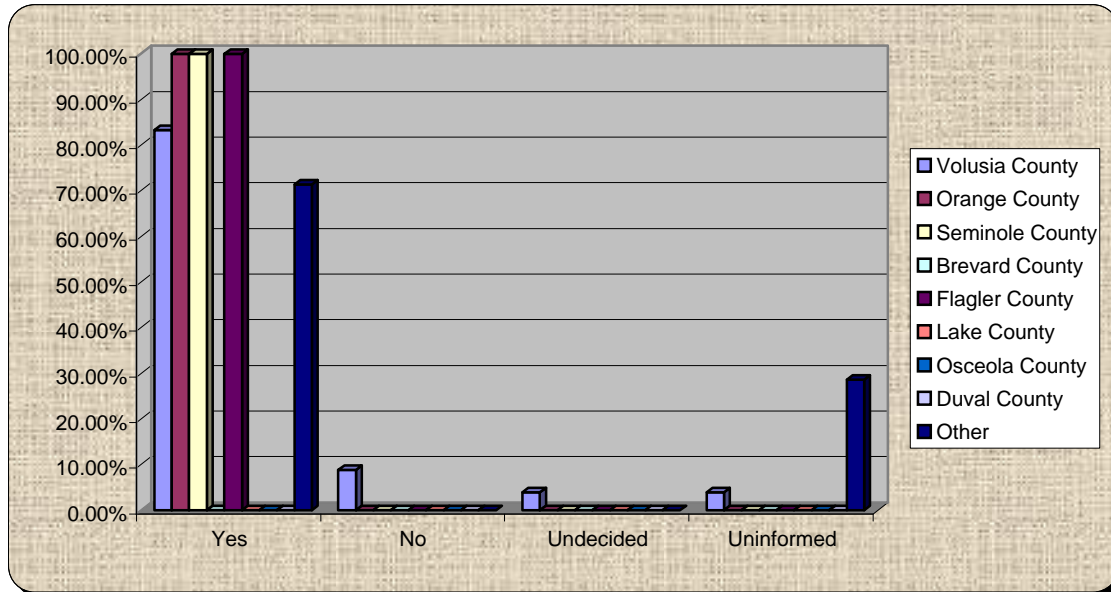
13.) How informed am I about growth planning and priorities in Volusia?

	Know almost nothing	Little knowledge	Moderate knowledge	Well informed
Volusia County	1.00%	17.00%	37.00%	45.00%
Orange County	0%	0%	0%	0%
Seminole County	0.00%	50.00%	25.00%	25.00%
Brevard County	0%	0%	0%	0%
Flagler County	0.00%	0.00%	0.00%	100.00%
Lake County	0%	0%	0%	0%
Osceola County	0%	0%	0%	0%
Duval County	0%	0%	0%	0%
Other	12.50%	37.50%	25.00%	25.00%



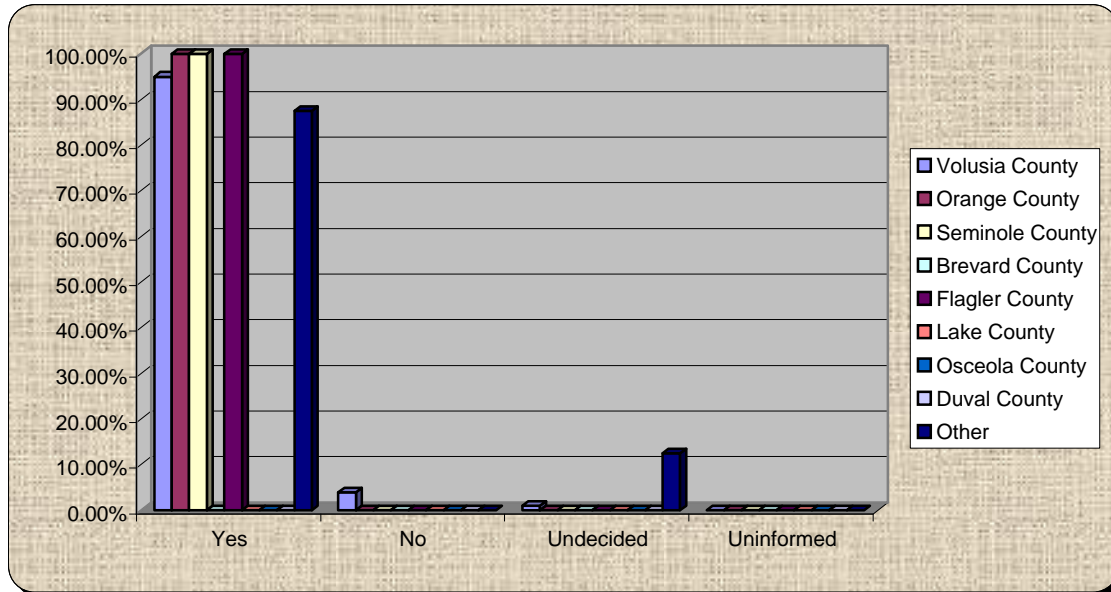
14.) Do you support minimum environmental standards countywide?

	Yes	No	Undecided	Uninformed
Volusia County	83.33%	8.82%	3.92%	3.92%
Orange County	100.00%	0.00%	0.00%	0.00%
Seminole County	100.00%	0.00%	0.00%	0.00%
Brevard County	0%	0%	0%	0%
Flagler County	100.00%	0.00%	0.00%	0.00%
Lake County	0%	0%	0%	0%
Osceola County	0%	0%	0%	0%
Duval County	0%	0%	0%	0%
Other	71.43%	0.00%	0.00%	28.57%



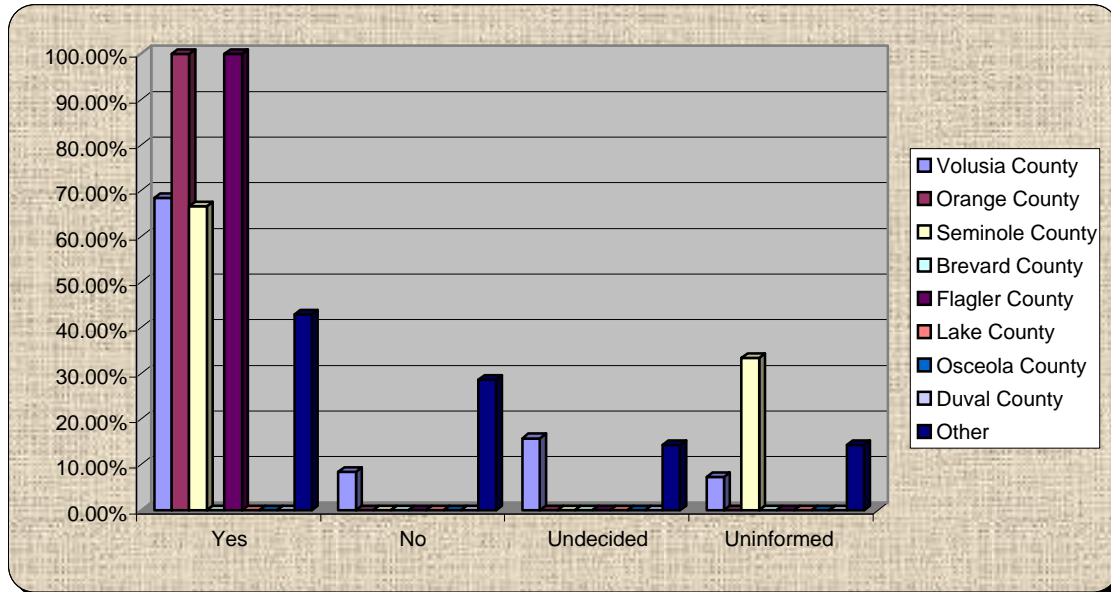
15.) Do you believe protecting natural areas will benefit your quality of life?

	Yes	No	Undecided	Uninformed
Volusia County	95.00%	4.00%	1.00%	0.00%
Orange County	100.00%	0.00%	0.00%	0.00%
Seminole County	100.00%	0.00%	0.00%	0.00%
Brevard County	0%	0%	0%	0%
Flagler County	100.00%	0.00%	0.00%	0.00%
Lake County	0%	0%	0%	0%
Osceola County	0%	0%	0%	0%
Duval County	0%	0%	0%	0%
Other	87.50%	0.00%	12.50%	0.00%



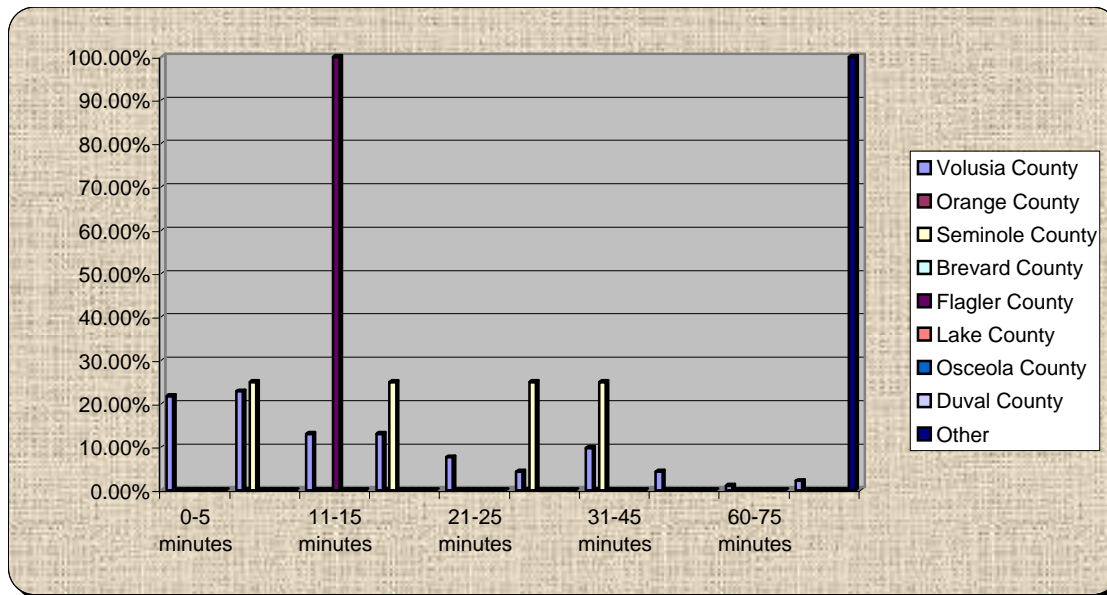
16.) Do you support smart growth tools such as transfer of development rights to protect rural and natural areas?

	Yes	No	Undecided	Uninformed
Volusia County	68.42%	8.42%	15.79%	7.37%
Orange County	100.00%	0.00%	0.00%	0.00%
Seminole County	66.67%	0.00%	0.00%	33.33%
Brevard County	0%	0%	0%	0%
Flagler County	100.00%	0.00%	0.00%	0.00%
Lake County	0%	0%	0%	0%
Osceola County	0%	0%	0%	0%
Duval County	0%	0%	0%	0%
Other	42.86%	28.57%	14.29%	14.29%



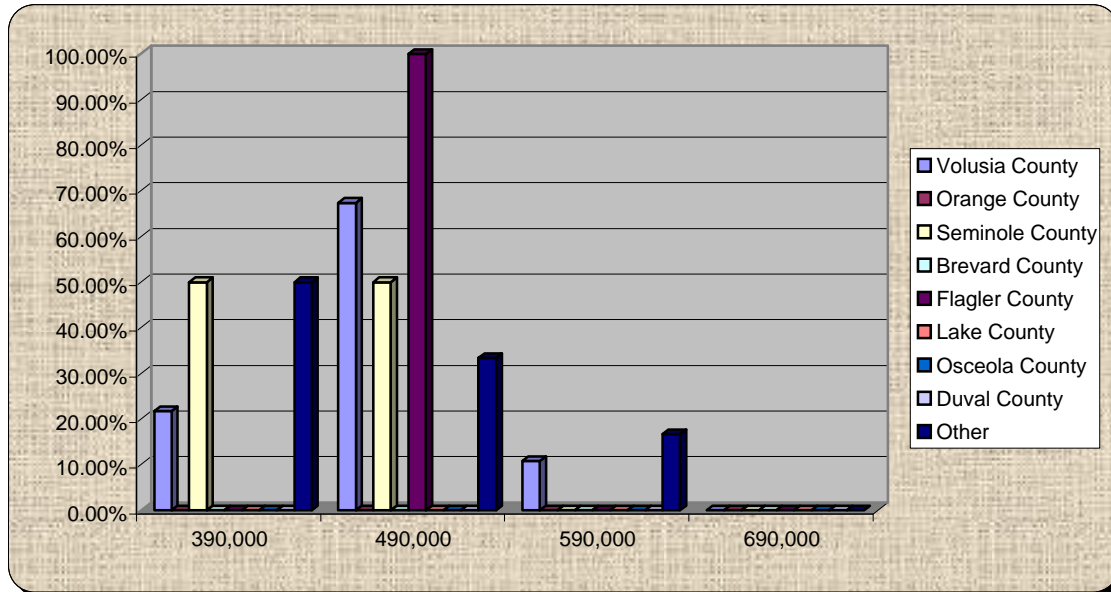
17.) Re-poll: How long does it take you to get to work?

	0-5 minutes	5-10 minutes	11-15 minutes	16-20 minutes	21-25 minutes	26-30 minutes	31-45 minutes	46-60 minutes	60-75 minutes	Do not Work
Volusia County	21.74%	22.83%	13.04%	13.04%	7.61%	4.35%	9.78%	4.35%	1.09%	2.17%
Orange County	0%	0%	0%	0%	0%	0%	0%	0%	0%	0%
Seminole County	0.00%	25.00%	0.00%	25.00%	0.00%	25.00%	25.00%	0.00%	0.00%	0.00%
Brevard County	0%	0%	0%	0%	0%	0%	0%	0%	0%	0%
Flagler County	0.00%	0.00%	100.00%	0.00%	0.00%	0.00%	0.00%	0.00%	0.00%	0.00%
Lake County	0%	0%	0%	0%	0%	0%	0%	0%	0%	0%
Osceola County	0%	0%	0%	0%	0%	0%	0%	0%	0%	0%
Duval County	0%	0%	0%	0%	0%	0%	0%	0%	0%	0%
Other	0.00%	0.00%	0.00%	0.00%	0.00%	0.00%	0.00%	0.00%	0.00%	100.00%



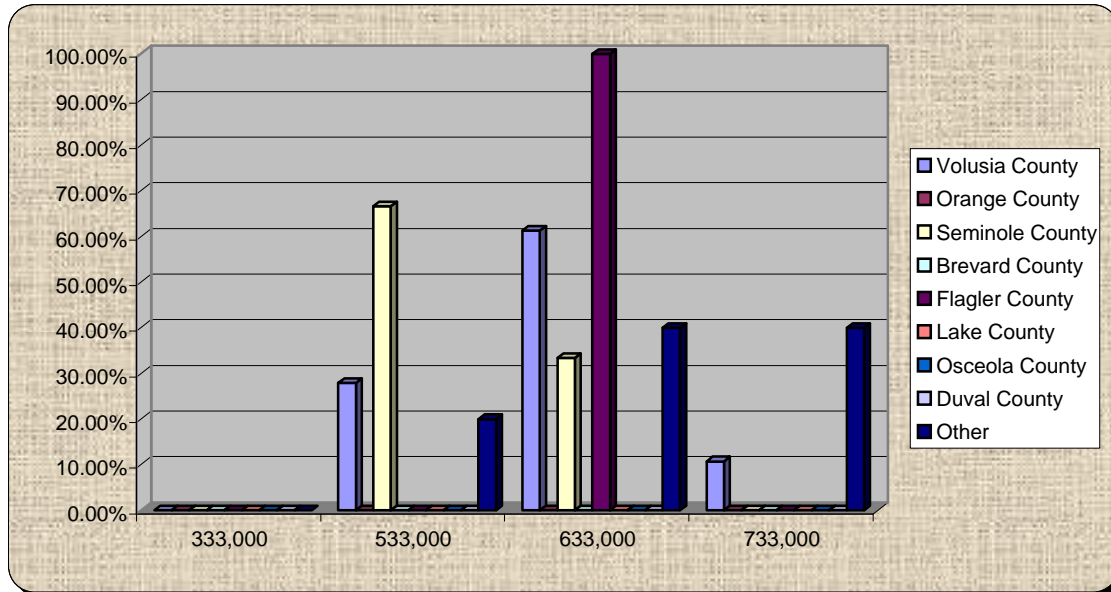
18.) What is the population of Volusia County?

	390,000	490,000	590,000	690,000
Volusia County	21.74%	67.39%	10.87%	0.00%
Orange County	0%	0%	0%	0%
Seminole County	50.00%	50.00%	0.00%	0.00%
Brevard County	0%	0%	0%	0%
Flagler County	0.00%	100.00%	0.00%	0.00%
Lake County	0%	0%	0%	0%
Osceola County	0%	0%	0%	0%
Duval County	0%	0%	0%	0%
Other	50.00%	33.33%	16.67%	0.00%



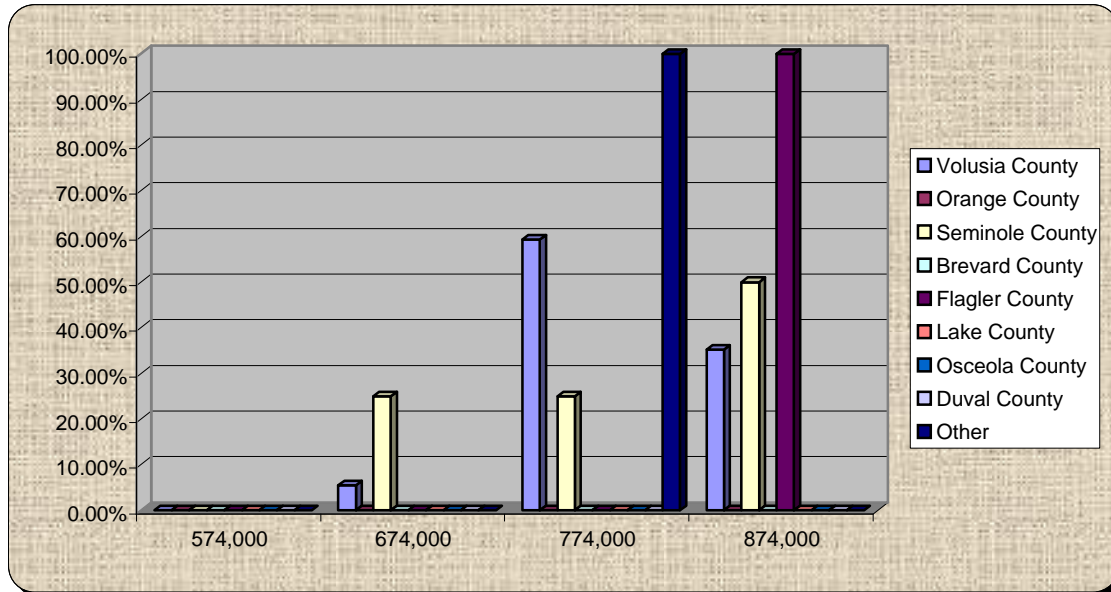
19.) What is the projected population of Volusia County in 2020?

	333,000	533,000	633,000	733,000
Volusia County	0.00%	27.96%	61.29%	10.75%
Orange County	0%	0%	0%	0%
Seminole County	0.00%	66.67%	33.33%	0.00%
Brevard County	0%	0%	0%	0%
Flagler County	0.00%	0.00%	100.00%	0.00%
Lake County	0%	0%	0%	0%
Osceola County	0%	0%	0%	0%
Duval County	0%	0%	0%	0%
Other	0.00%	20.00%	40.00%	40.00%



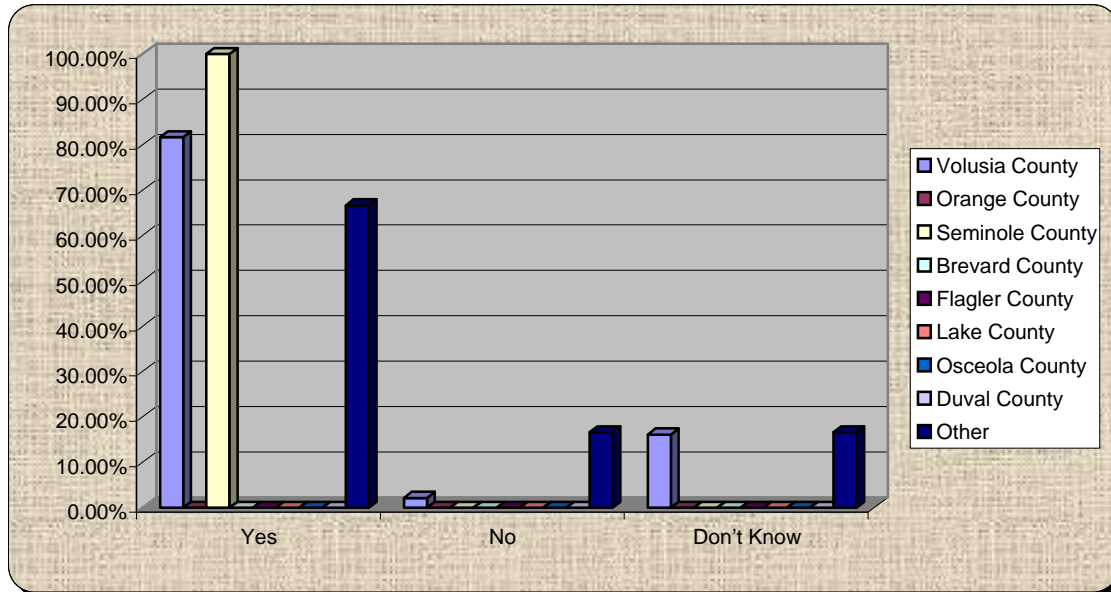
20.) What is the projected population of Volusia County in 2050?

	574,000	674,000	774,000	874,000
Volusia County	0.00%	5.49%	59.34%	35.16%
Orange County	0%	0%	0%	0%
Seminole County	0.00%	25.00%	25.00%	50.00%
Brevard County	0%	0%	0%	0%
Flagler County	0.00%	0.00%	0.00%	100.00%
Lake County	0%	0%	0%	0%
Osceola County	0%	0%	0%	0%
Duval County	0%	0%	0%	0%
Other	0.00%	0.00%	100.00%	0.00%



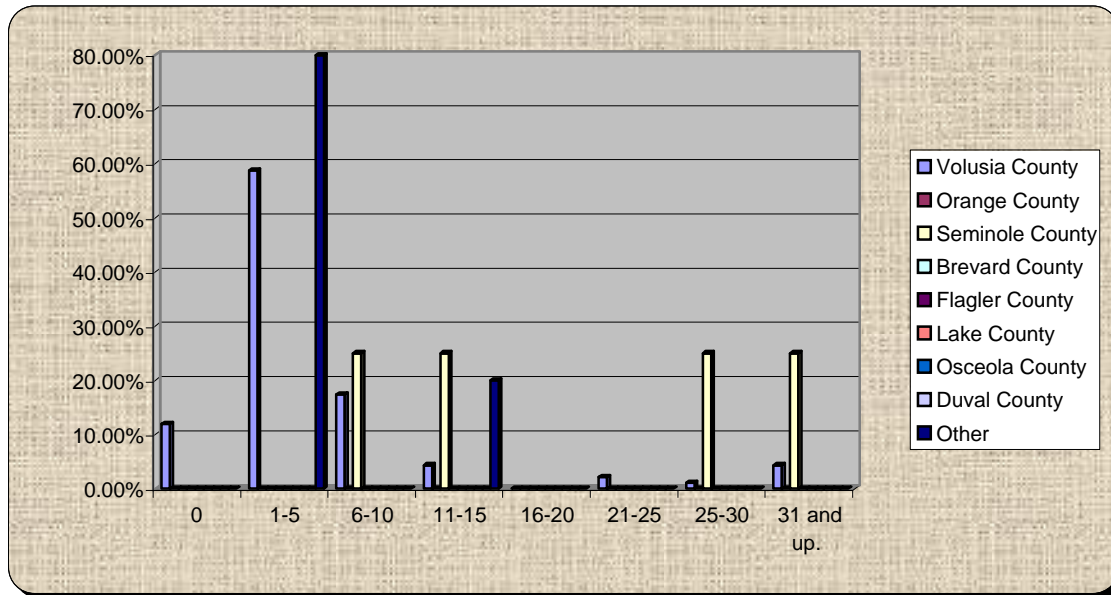
21.) Do you believe sustainable communities will support a strong local economy?

	Yes	No	Don't Know
Volusia County	81.72%	2.15%	16.13%
Orange County	0%	0%	0%
Seminole County	100.00%	0.00%	0.00%
Brevard County	0%	0%	0%
Flagler County	0%	0%	0%
Lake County	0%	0%	0%
Osceola County	0%	0%	0%
Duval County	0%	0%	0%
Other	66.67%	16.67%	16.67%



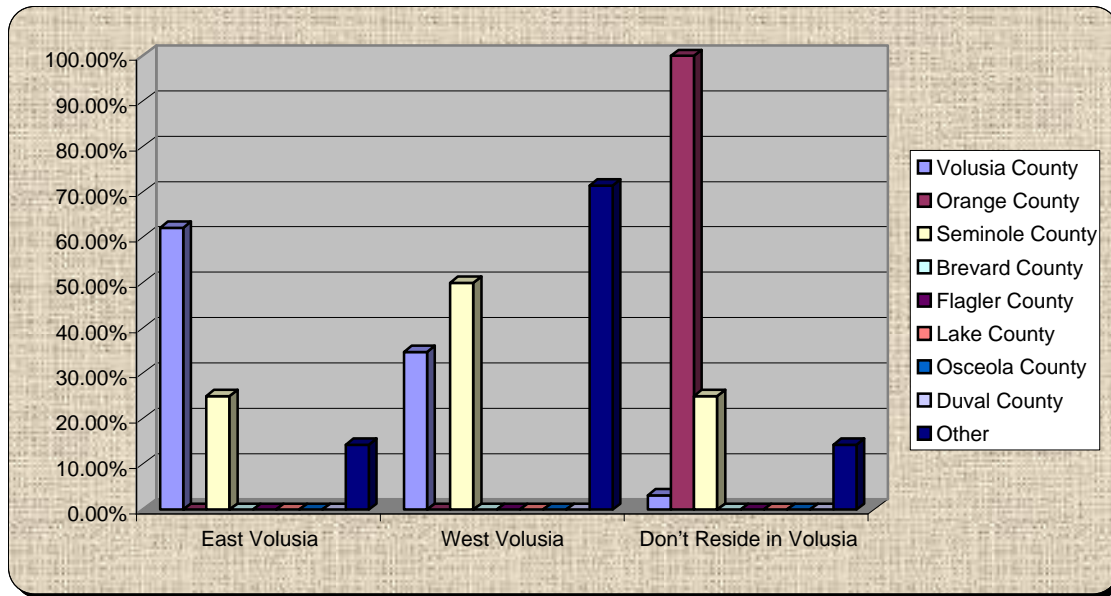
22.) How many days per month do you leave the borders of Volusia for commercial, educational, entertainment, healthcare or other activities?

	0	1-5	6-10	11-15	16-20	21-25	25-30	31 and up.
Volusia County	11.96%	58.70%	17.39%	4.35%	0.00%	2.17%	1.09%	4.35%
Orange County	0%	0%	0%	0%	0%	0%	0%	0%
Seminole County	0.00%	0.00%	25.00%	25.00%	0.00%	0.00%	25.00%	25.00%
Brevard County	0%	0%	0%	0%	0%	0%	0%	0%
Flagler County	0%	0%	0%	0%	0%	0%	0%	0%
Lake County	0%	0%	0%	0%	0%	0%	0%	0%
Osceola County	0%	0%	0%	0%	0%	0%	0%	0%
Duval County	0%	0%	0%	0%	0%	0%	0%	0%
Other	0.00%	80.00%	0.00%	20.00%	0.00%	0.00%	0.00%	0.00%



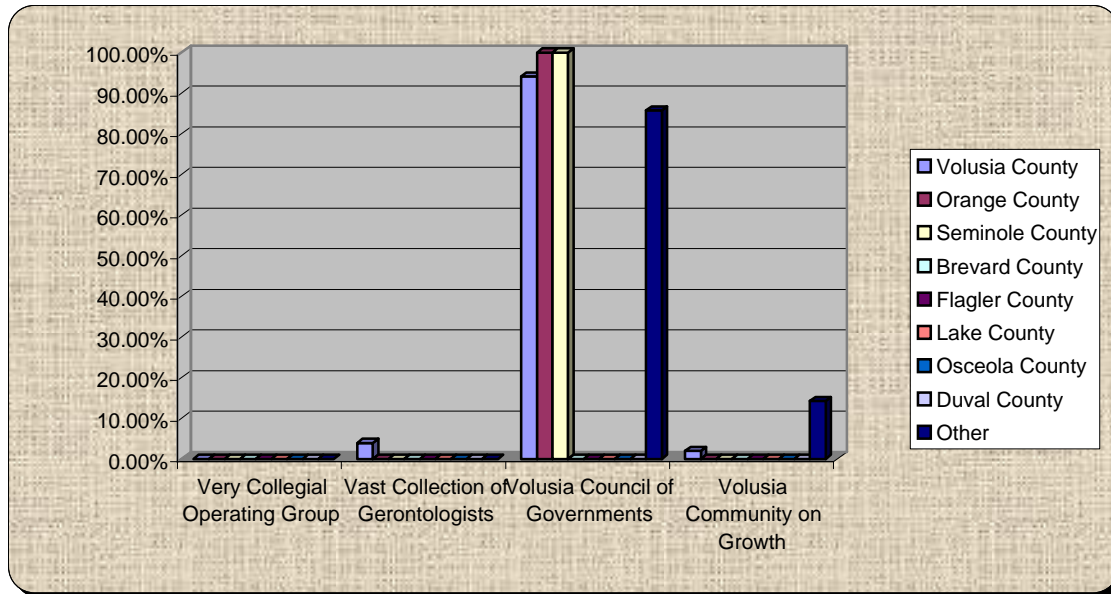
23.) Where do you reside?

	East Volusia	West Volusia	Don't Reside in Volusia
Volusia County	62.11%	34.74%	3.16%
Orange County	0.00%	0.00%	100.00%
Seminole County	25.00%	50.00%	25.00%
Brevard County	0%	0%	0%
Flagler County	0%	0%	0%
Lake County	0%	0%	0%
Osceola County	0%	0%	0%
Duval County	0%	0%	0%
Other	14.29%	71.43%	14.29%



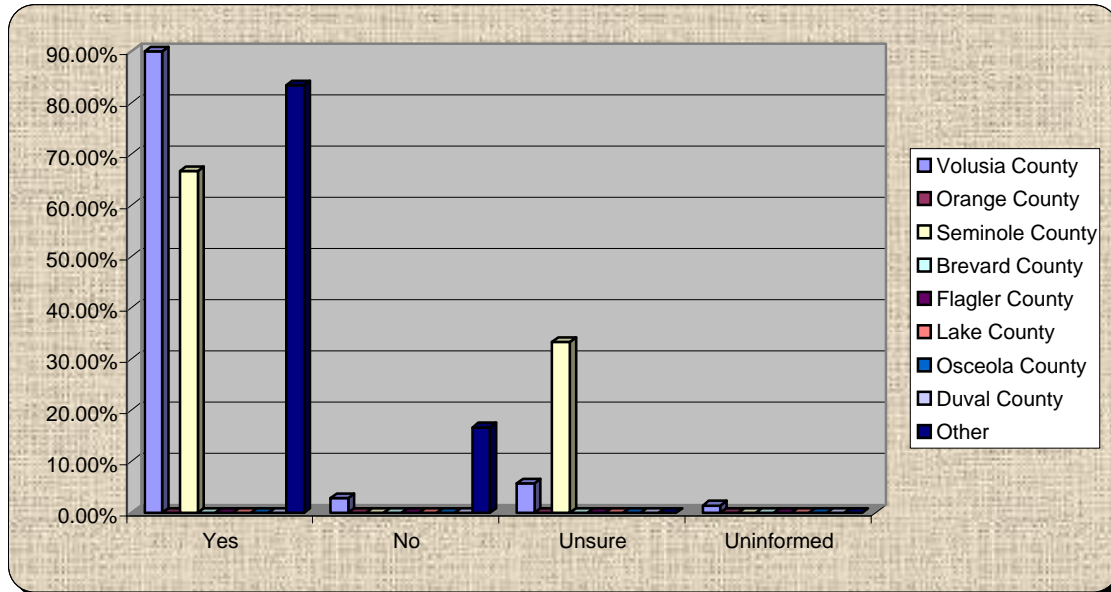
24.) What is VCOG:

	Very Collegial Operating Group	Vast Collection of Gerontologists	Volusia Council of Governments	Volusia Community on Growth
Volusia County	0.00%	3.96%	94.06%	1.98%
Orange County	0.00%	0.00%	100.00%	0.00%
Seminole County	0.00%	0.00%	100.00%	0.00%
Brevard County	0%	0%	0%	0%
Flagler County	0%	0%	0%	0%
Lake County	0%	0%	0%	0%
Osceola County	0%	0%	0%	0%
Duval County	0%	0%	0%	0%
Other	0.00%	0.00%	85.71%	14.29%



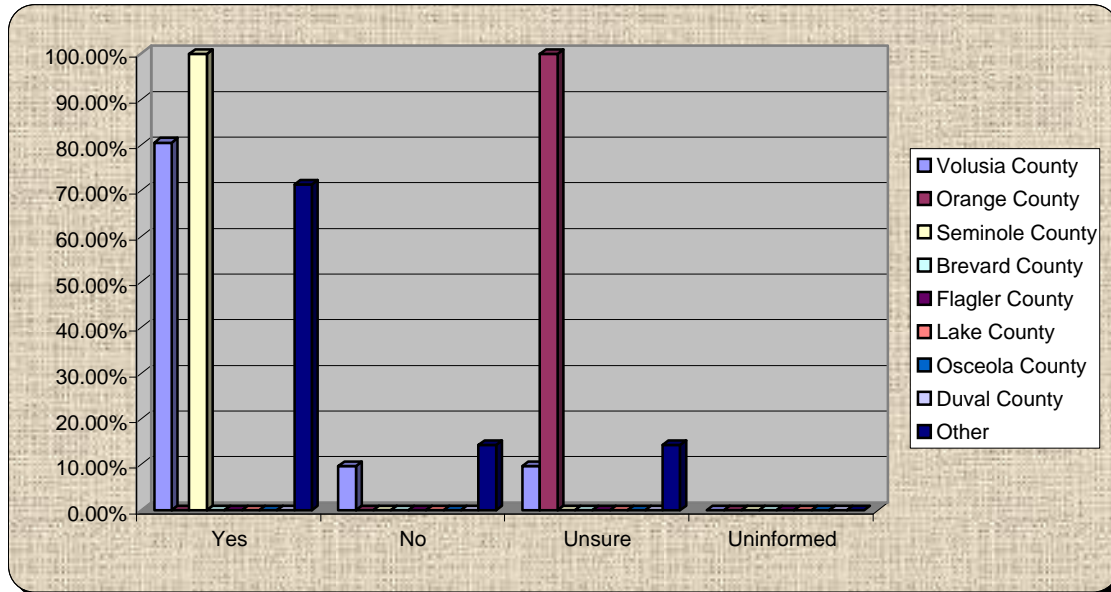
25.) Accelerating deployment of the right transportation technology will make a difference in achieving a sustainable future

	Yes	No	Unsure	Uninformed
Volusia County	90.00%	2.86%	5.71%	1.43%
Orange County	0%	0%	0%	0%
Seminole County	66.67%	0.00%	33.33%	0.00%
Brevard County	0%	0%	0%	0%
Flagler County	0%	0%	0%	0%
Lake County	0%	0%	0%	0%
Osceola County	0%	0%	0%	0%
Duval County	0%	0%	0%	0%
Other	83.33%	16.67%	0.00%	0.00%



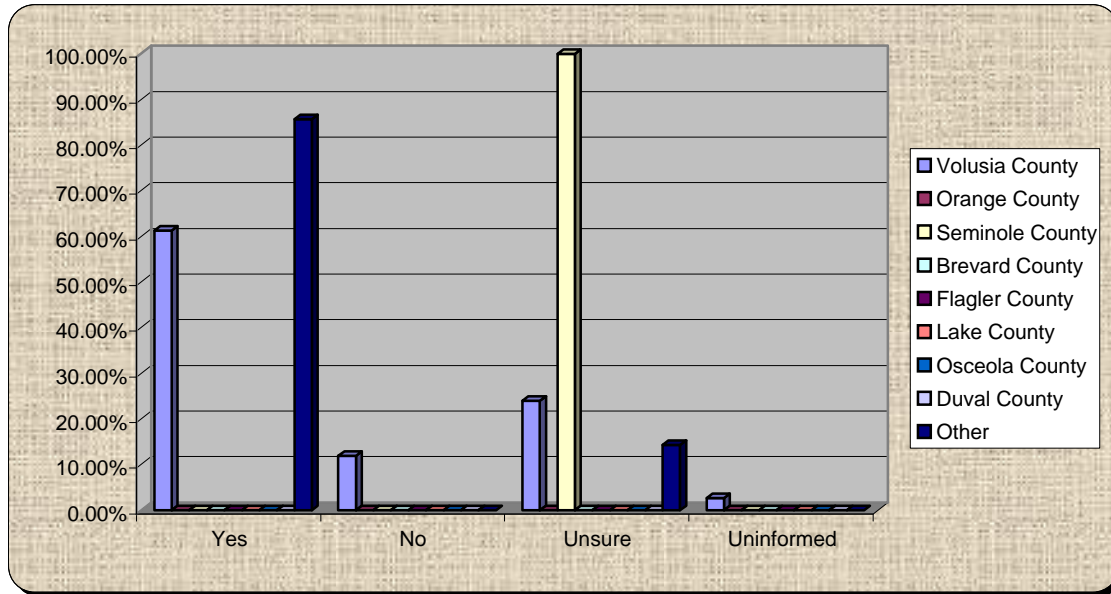
26.) Commuter rail is a vital component of our sustainable community

	Yes	No	Unsure	Uninformed
Volusia County	80.56%	9.72%	9.72%	0.00%
Orange County	0.00%	0.00%	100.00%	0.00%
Seminole County	100.00%	0.00%	0.00%	0.00%
Brevard County	0%	0%	0%	0%
Flagler County	0%	0%	0%	0%
Lake County	0%	0%	0%	0%
Osceola County	0%	0%	0%	0%
Duval County	0%	0%	0%	0%
Other	71.43%	14.29%	14.29%	0.00%



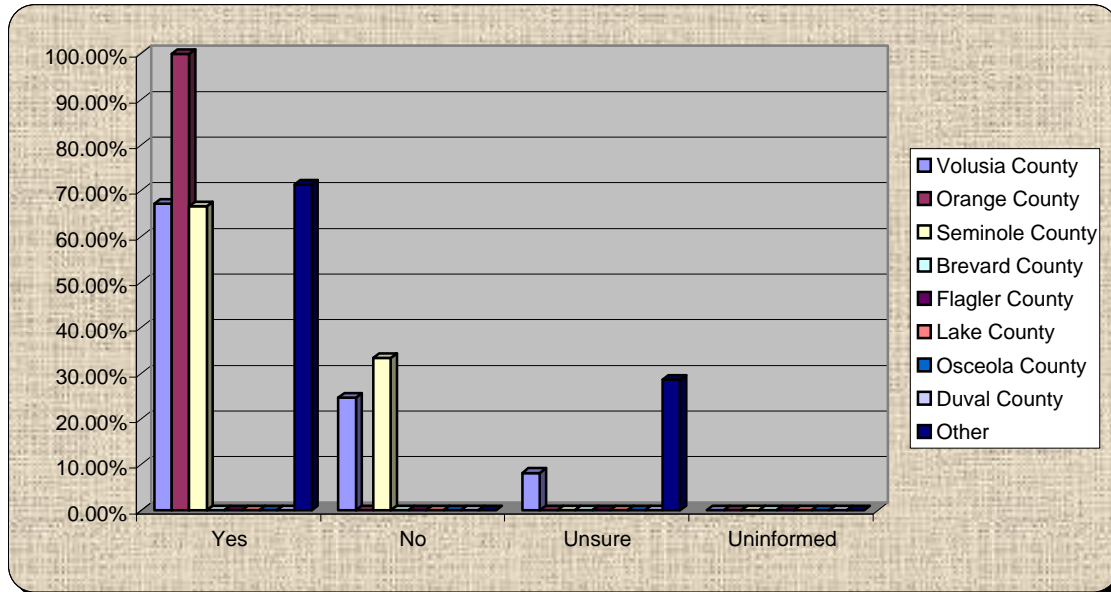
27.) I understand how A & B operate and what scenarios they represent

	Yes	No	Unsure	Uninformed
Volusia County	61.33%	12.00%	24.00%	2.67%
Orange County	0%	0%	0%	0%
Seminole County	0.00%	0.00%	100.00%	0.00%
Brevard County	0%	0%	0%	0%
Flagler County	0%	0%	0%	0%
Lake County	0%	0%	0%	0%
Osceola County	0%	0%	0%	0%
Duval County	0%	0%	0%	0%
Other	85.71%	0.00%	14.29%	0.00%



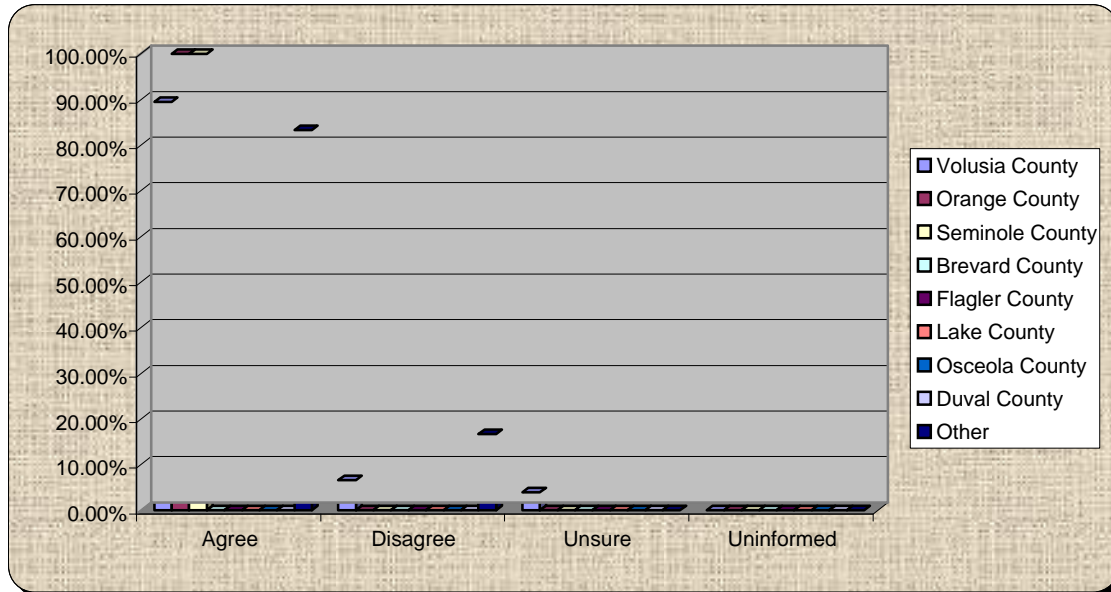
28.) Communicating the complexity of systems and infrastructure is our most serious barrier to success

	Yes	No	Unsure	Uninformed
Volusia County	67.12%	24.66%	8.22%	0.00%
Orange County	100.00%	0.00%	0.00%	0.00%
Seminole County	66.67%	33.33%	0.00%	0.00%
Brevard County	0%	0%	0%	0%
Flagler County	0%	0%	0%	0%
Lake County	0%	0%	0%	0%
Osceola County	0%	0%	0%	0%
Duval County	0%	0%	0%	0%
Other	71.43%	0.00%	28.57%	0.00%



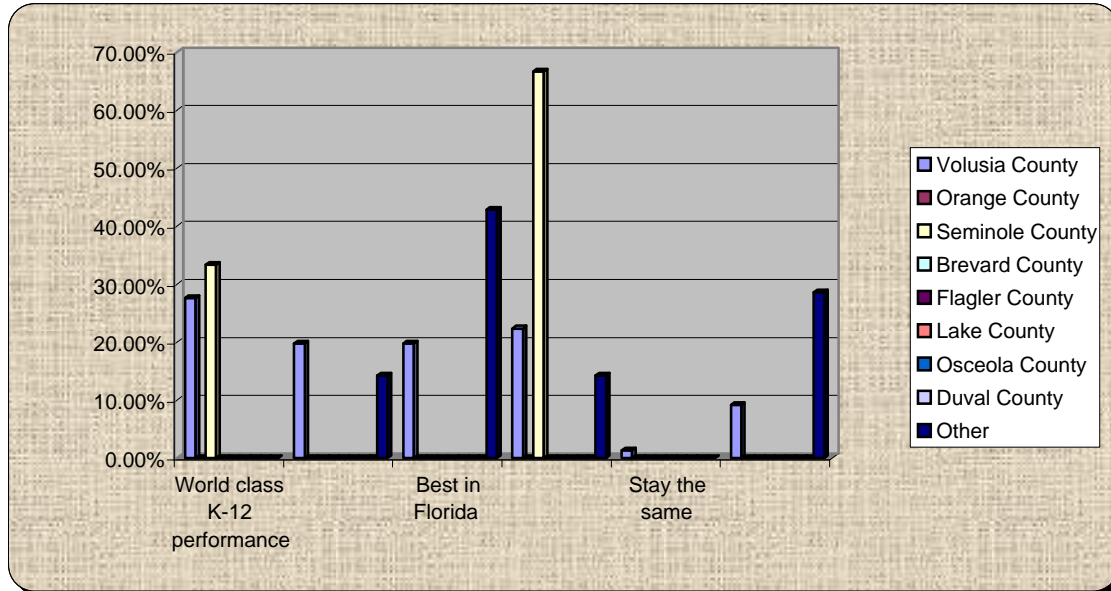
29.) We can't achieve our vision without culture change

	Agree	Disagree	Unsure	Uninformed
Volusia County	89.47%	6.58%	3.95%	0.00%
Orange County	100.00%	0.00%	0.00%	0.00%
Seminole County	100.00%	0.00%	0.00%	0.00%
Brevard County	0%	0%	0%	0%
Flagler County	0%	0%	0%	0%
Lake County	0%	0%	0%	0%
Osceola County	0%	0%	0%	0%
Duval County	0%	0%	0%	0%
Other	83.33%	16.67%	0.00%	0.00%



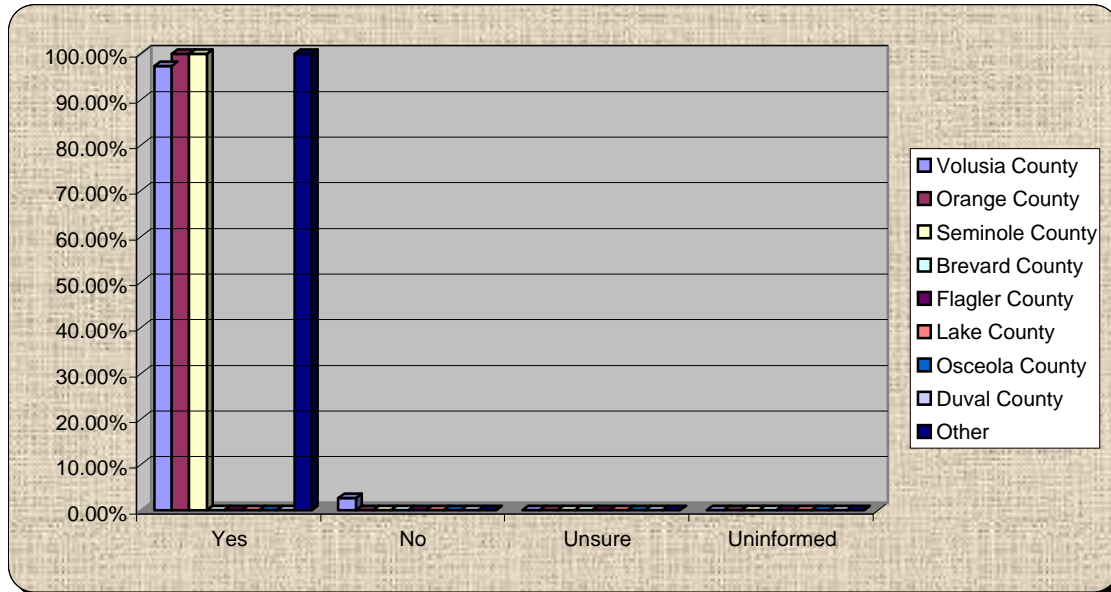
30.) Achieving our vision requires:

	12 performance	Best in nation	Best in Florida	Best in region	Stay the same	Not a factor
Volusia County	27.63%	19.74%	19.74%	22.37%	1.32%	9.21%
Orange County	0%	0%	0%	0%	0%	0%
Seminole County	33.33%	0.00%	0.00%	66.67%	0.00%	0.00%
Brevard County	0%	0%	0%	0%	0%	0%
Flagler County	0%	0%	0%	0%	0%	0%
Lake County	0%	0%	0%	0%	0%	0%
Osceola County	0%	0%	0%	0%	0%	0%
Duval County	0%	0%	0%	0%	0%	0%
Other	0.00%	14.29%	42.86%	14.29%	0.00%	28.57%



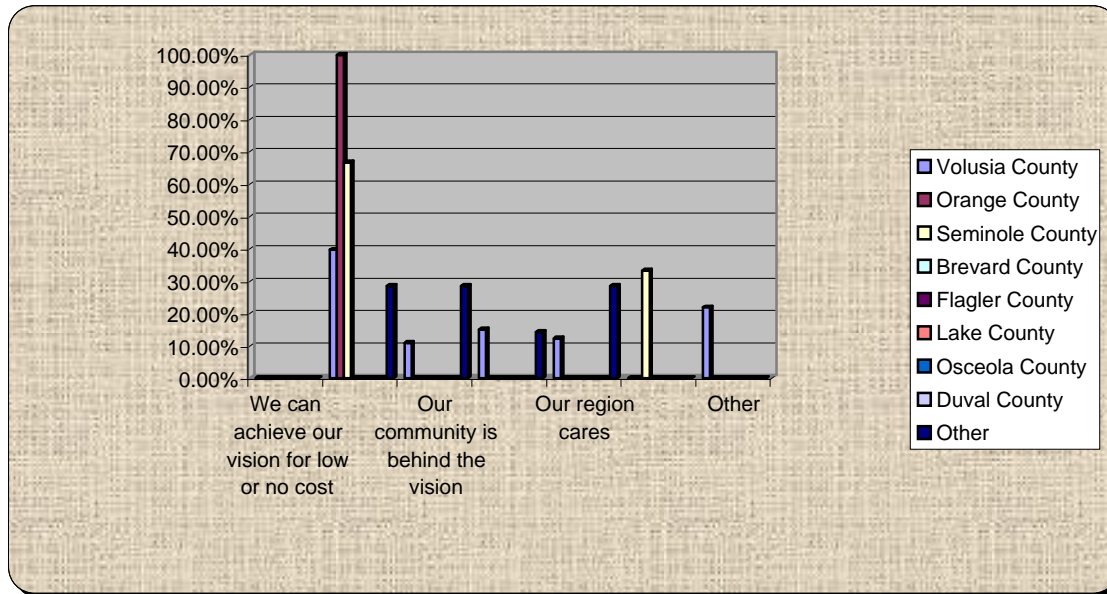
31.) I want to keep up with this effort

	Yes	No	Unsure	Uninformed
Volusia County	97.26%	2.74%	0.00%	0.00%
Orange County	100.00%	0.00%	0.00%	0.00%
Seminole County	100.00%	0.00%	0.00%	0.00%
Brevard County	0%	0%	0%	0%
Flagler County	0%	0%	0%	0%
Lake County	0%	0%	0%	0%
Osceola County	0%	0%	0%	0%
Duval County	0%	0%	0%	0%
Other	100.00%	0.00%	0.00%	0.00%



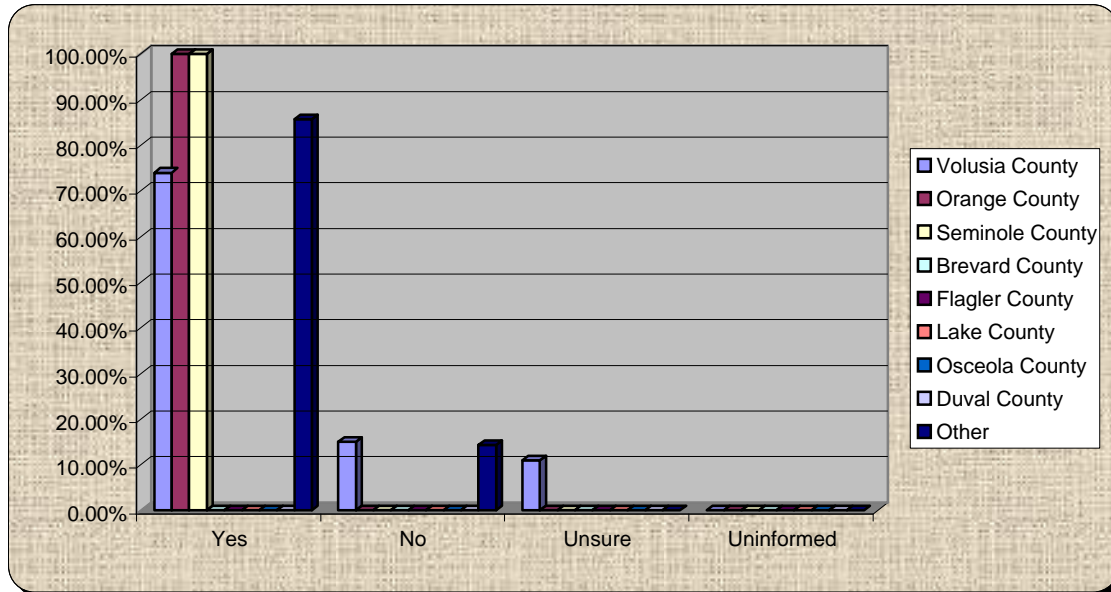
32.) What is the most important and credible message for your neighbor?

	We can achieve our vision for low or no cost	Our community governments can and are working together	Our community is behind the vision	Other communities have or are doing this with success	Our region cares	State policy and regulations are supportive	Other
Volusia County	0.00%	39.73%	10.96%	15.07%	12.33%	0.00%	21.92%
Orange County	0.00%	100.00%	0.00%	0.00%	0.00%	0.00%	0.00%
Seminole County	0.00%	66.67%	0.00%	0.00%	0.00%	33.33%	0.00%
Brevard County	0%	0%	0%	0%	0%	0%	0%
Flagler County	0%	0%	0%	0%	0%	0%	0%
Lake County	0%	0%	0%	0%	0%	0%	0%
Osceola County	0%	0%	0%	0%	0%	0%	0%
Duval County	0%	0%	0%	0%	0%	0%	0%
Other	0.00%	28.57%	28.57%	14.29%	28.57%	0.00%	0.00%



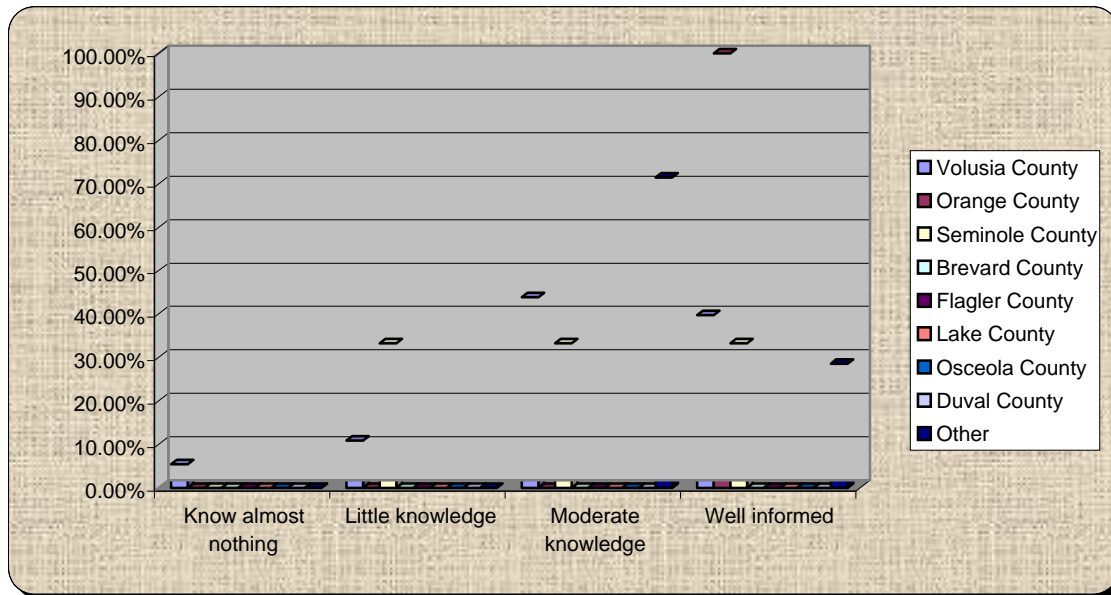
33.) Would you pay the extra money to bypass congestion?

	Yes	No	Unsure	Uninformed
Volusia County	73.97%	15.07%	10.96%	0.00%
Orange County	100.00%	0.00%	0.00%	0.00%
Seminole County	100.00%	0.00%	0.00%	0.00%
Brevard County	0%	0%	0%	0%
Flagler County	0%	0%	0%	0%
Lake County	0%	0%	0%	0%
Osceola County	0%	0%	0%	0%
Duval County	0%	0%	0%	0%
Other	85.71%	14.29%	0.00%	0.00%



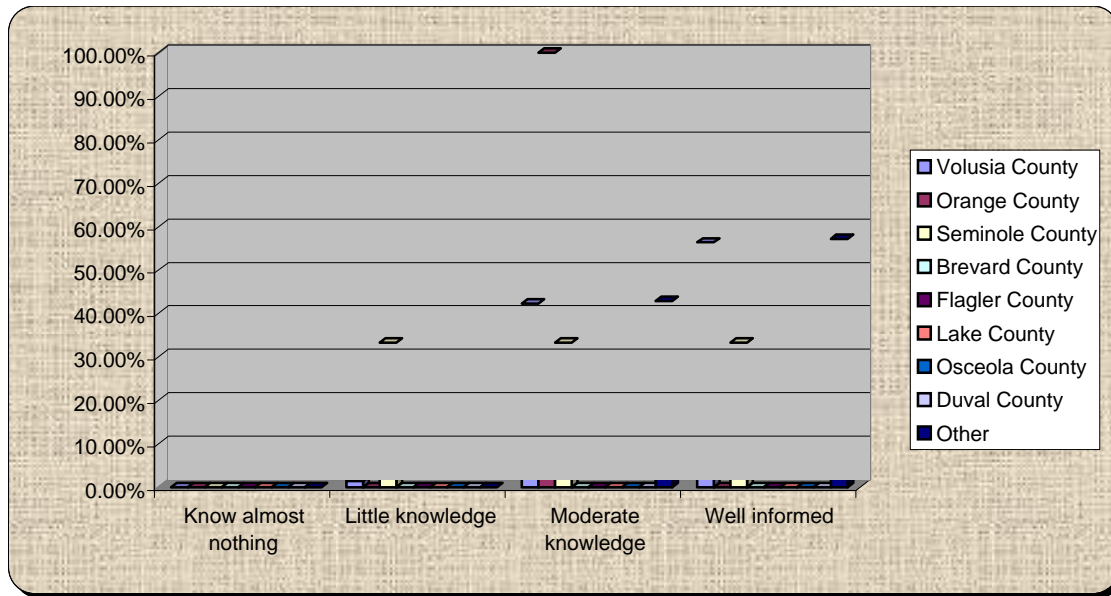
34.) How informed am I about myregion.org? Scale of 1 to 4, 4 well informed and 1 know almost nothing

	Know almost nothing	Little knowledge	Moderate knowledge	Well informed
Volusia County	5.48%	10.96%	43.84%	39.73%
Orange County	0.00%	0.00%	0.00%	100.00%
Seminole County	0.00%	33.33%	33.33%	33.33%
Brevard County	0%	0%	0%	0%
Flagler County	0%	0%	0%	0%
Lake County	0%	0%	0%	0%
Osceola County	0%	0%	0%	0%
Duval County	0%	0%	0%	0%
Other	0.00%	0.00%	71.43%	28.57%



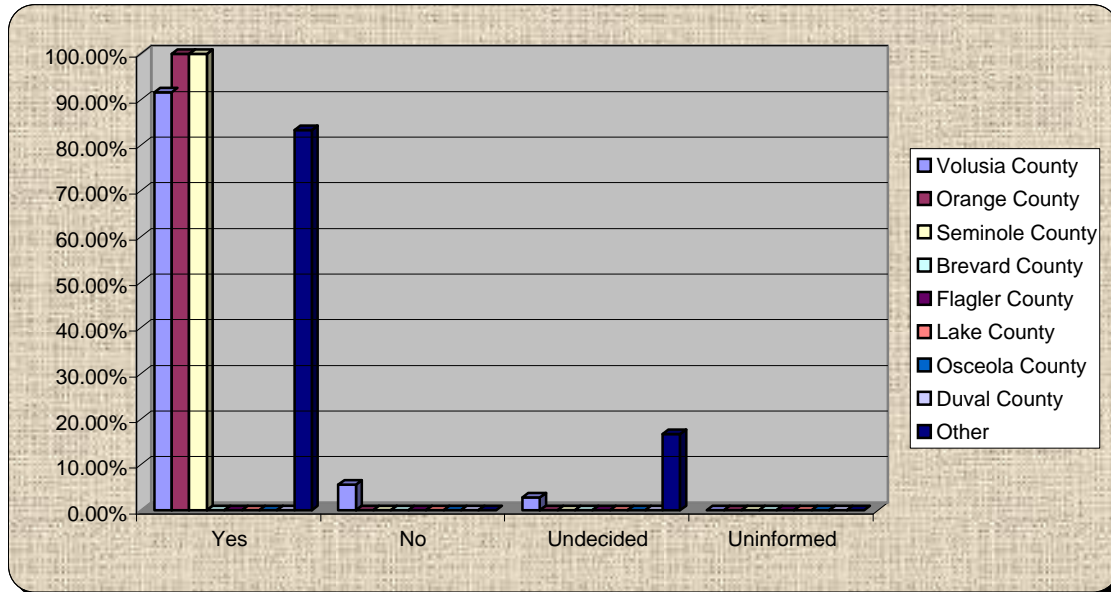
35.) How informed am I about growth planning and priorities in Volusia?

	Know almost nothing	Little knowledge	Moderate knowledge	Well informed
Volusia County	0.00%	1.41%	42.25%	56.34%
Orange County	0.00%	0.00%	100.00%	0.00%
Seminole County	0.00%	33.33%	33.33%	33.33%
Brevard County	0%	0%	0%	0%
Flagler County	0%	0%	0%	0%
Lake County	0%	0%	0%	0%
Osceola County	0%	0%	0%	0%
Duval County	0%	0%	0%	0%
Other	0.00%	0.00%	42.86%	57.14%



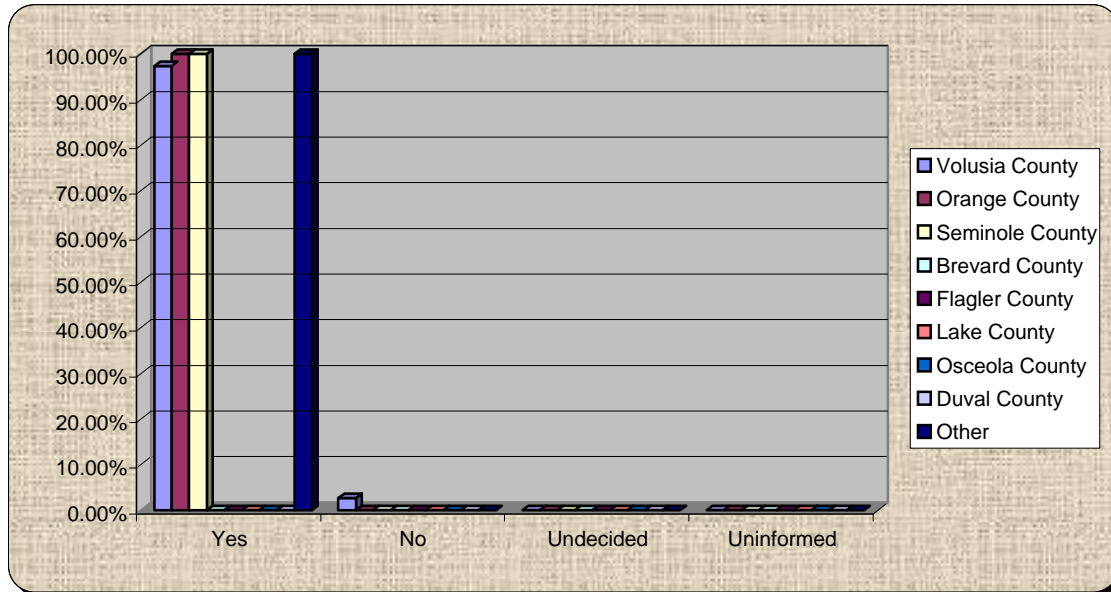
36.) Do you support minimum environmental standards countywide?

	Yes	No	Undecided	Uninformed
Volusia County	91.55%	5.63%	2.82%	0.00%
Orange County	100.00%	0.00%	0.00%	0.00%
Seminole County	100.00%	0.00%	0.00%	0.00%
Brevard County	0%	0%	0%	0%
Flagler County	0%	0%	0%	0%
Lake County	0%	0%	0%	0%
Osceola County	0%	0%	0%	0%
Duval County	0%	0%	0%	0%
Other	83.33%	0.00%	16.67%	0.00%



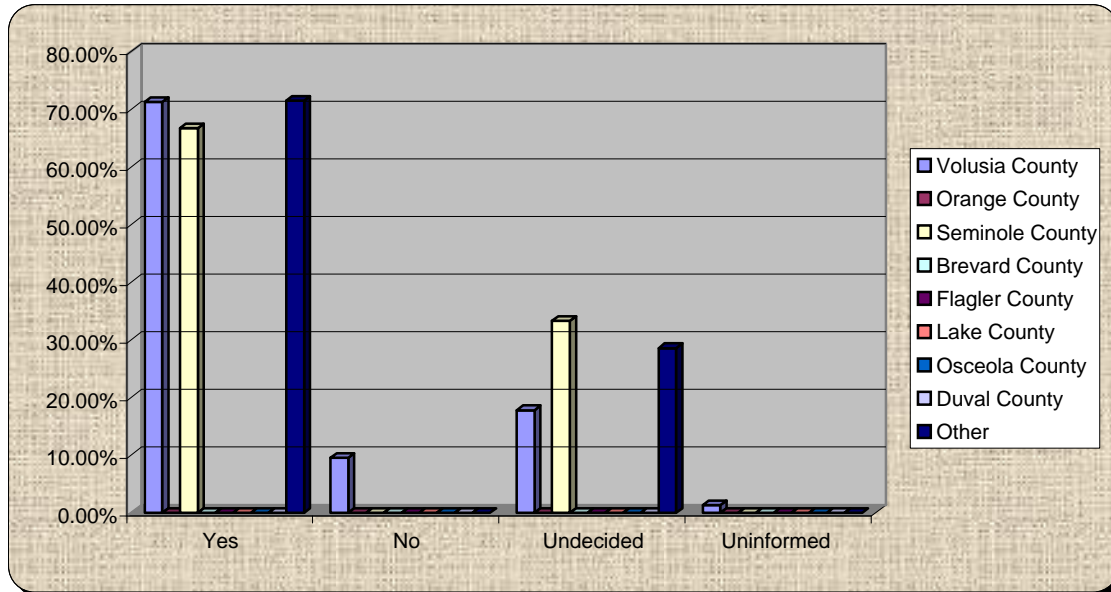
37.) Do you believe protecting natural areas will benefit your quality of life?

	Yes	No	Undecided	Uninformed
Volusia County	97.26%	2.74%	0.00%	0.00%
Orange County	100.00%	0.00%	0.00%	0.00%
Seminole County	100.00%	0.00%	0.00%	0.00%
Brevard County	0%	0%	0%	0%
Flagler County	0%	0%	0%	0%
Lake County	0%	0%	0%	0%
Osceola County	0%	0%	0%	0%
Duval County	0%	0%	0%	0%
Other	100.00%	0.00%	0.00%	0.00%



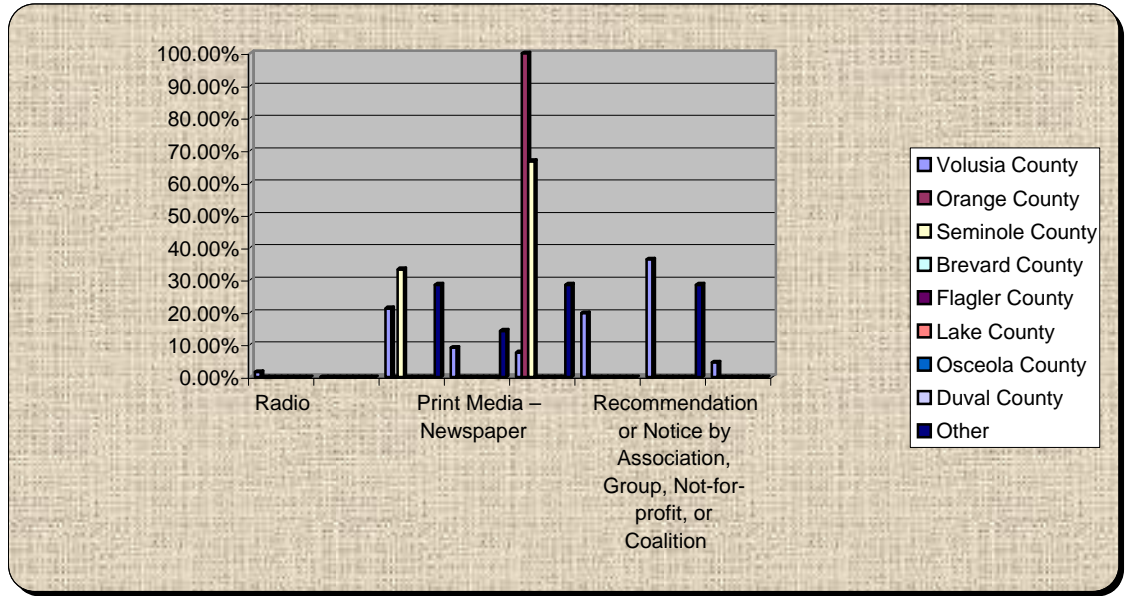
38.) Do you support smart growth tools such as transfer of development rights to protect rural and natural areas?

	Yes	No	Undecided	Uninformed
Volusia County	71.23%	9.59%	17.81%	1.37%
Orange County	0%	0%	0%	0%
Seminole County	66.67%	0.00%	33.33%	0.00%
Brevard County	0%	0%	0%	0%
Flagler County	0%	0%	0%	0%
Lake County	0%	0%	0%	0%
Osceola County	0%	0%	0%	0%
Duval County	0%	0%	0%	0%
Other	71.43%	0.00%	28.57%	0.00%



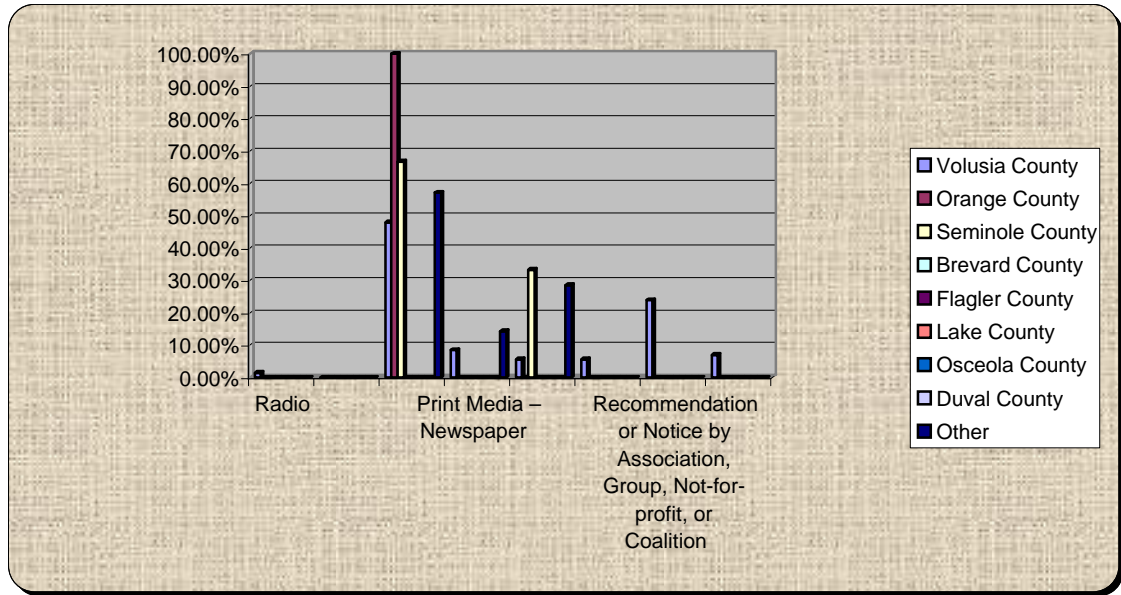
39.) How did you hear about this Summit?

	Radio	TV	Internet	Print Media – Newspaper	Word of Mouth or Phone	Written Invitation	recommendation or Notice by Association, Group, Not-for- profit, or Coalition	Other
Volusia County	1.52%	0.00%	21.21%	9.09%	7.58%	19.70%	36.36%	4.55%
Orange County	0.00%	0.00%	0.00%	0.00%	100.00%	0.00%	0.00%	0.00%
Seminole County	0.00%	0.00%	33.33%	0.00%	66.67%	0.00%	0.00%	0.00%
Brevard County	0%	0%	0%	0%	0%	0%	0%	0%
Flagler County	0%	0%	0%	0%	0%	0%	0%	0%
Lake County	0%	0%	0%	0%	0%	0%	0%	0%
Osceola County	0%	0%	0%	0%	0%	0%	0%	0%
Duval County	0%	0%	0%	0%	0%	0%	0%	0%
Other	0.00%	0.00%	28.57%	14.29%	28.57%	0.00%	28.57%	0.00%



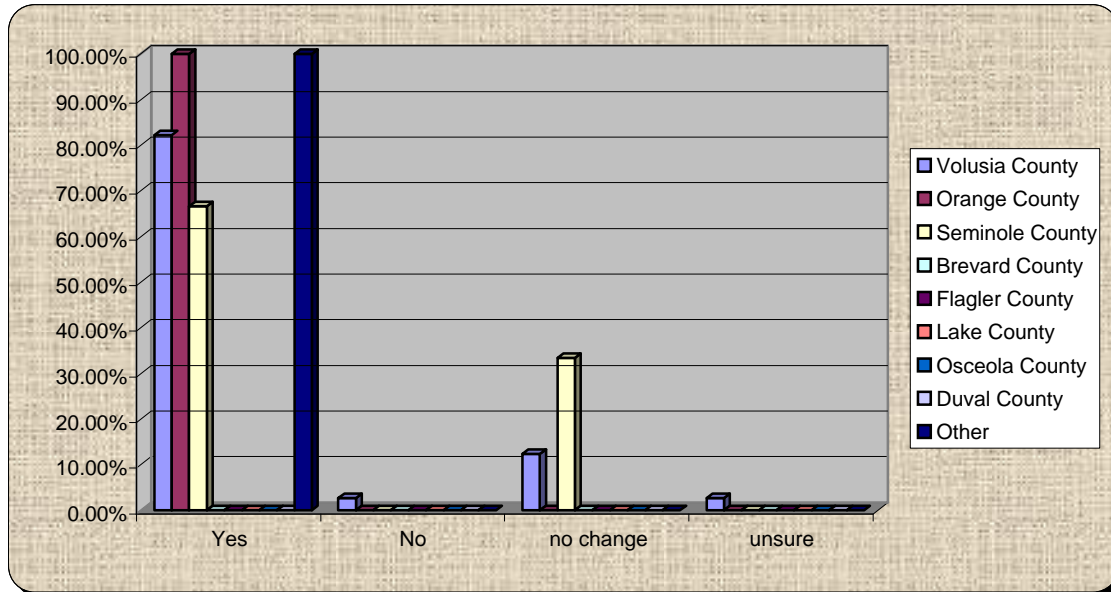
40.) How did you hear about this Summit?

	Radio	TV	Internet	Print Media – Newspaper	Word of Mouth or Phone	Written Invitation	recommendation or Notice by Association, Group, Not-for- profit, or	Other
Volusia County	1.41%	0.00%	47.89%	8.45%	5.63%	5.63%	23.94%	7.04%
Orange County	0.00%	0.00%	100.00%	0.00%	0.00%	0.00%	0.00%	0.00%
Seminole County	0.00%	0.00%	66.67%	0.00%	33.33%	0.00%	0.00%	0.00%
Brevard County	0%	0%	0%	0%	0%	0%	0%	0%
Flagler County	0%	0%	0%	0%	0%	0%	0%	0%
Lake County	0%	0%	0%	0%	0%	0%	0%	0%
Osceola County	0%	0%	0%	0%	0%	0%	0%	0%
Duval County	0%	0%	0%	0%	0%	0%	0%	0%
Other	0.00%	0.00%	57.14%	14.29%	28.57%	0.00%	0.00%	0.00%



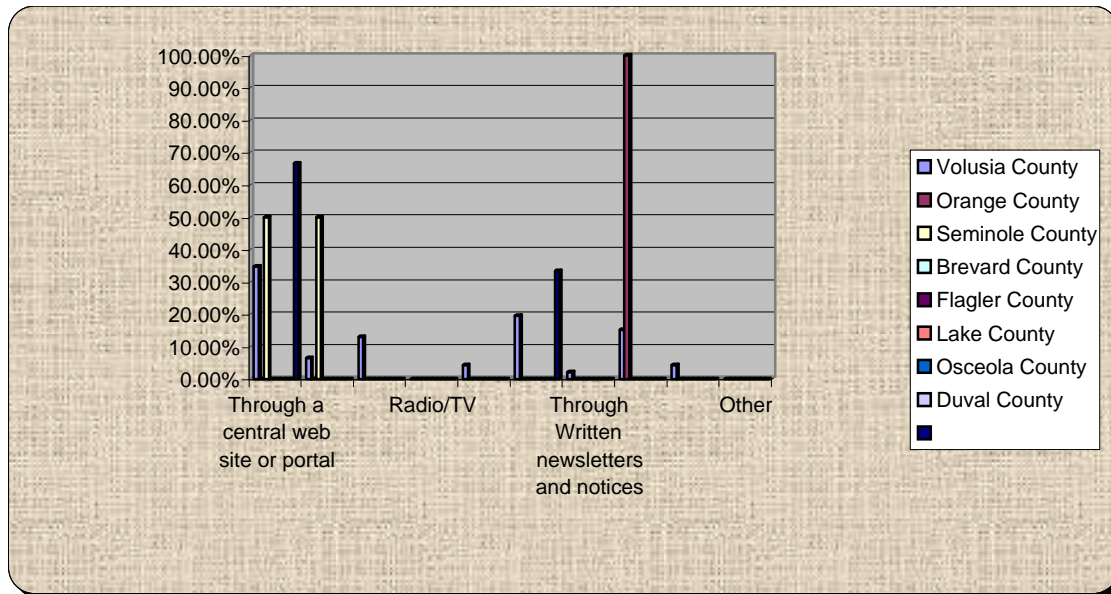
41.) I Feel I have improved access to data and information going forward

	Yes	No	no change	unsure
Volusia County	82.19%	2.74%	12.33%	2.74%
Orange County	100.00%	0.00%	0.00%	0.00%
Seminole County	66.67%	0.00%	33.33%	0.00%
Brevard County	0%	0%	0%	0%
Flagler County	0%	0%	0%	0%
Lake County	0%	0%	0%	0%
Osceola County	0%	0%	0%	0%
Duval County	0%	0%	0%	0%
Other	100.00%	0.00%	0.00%	0.00%



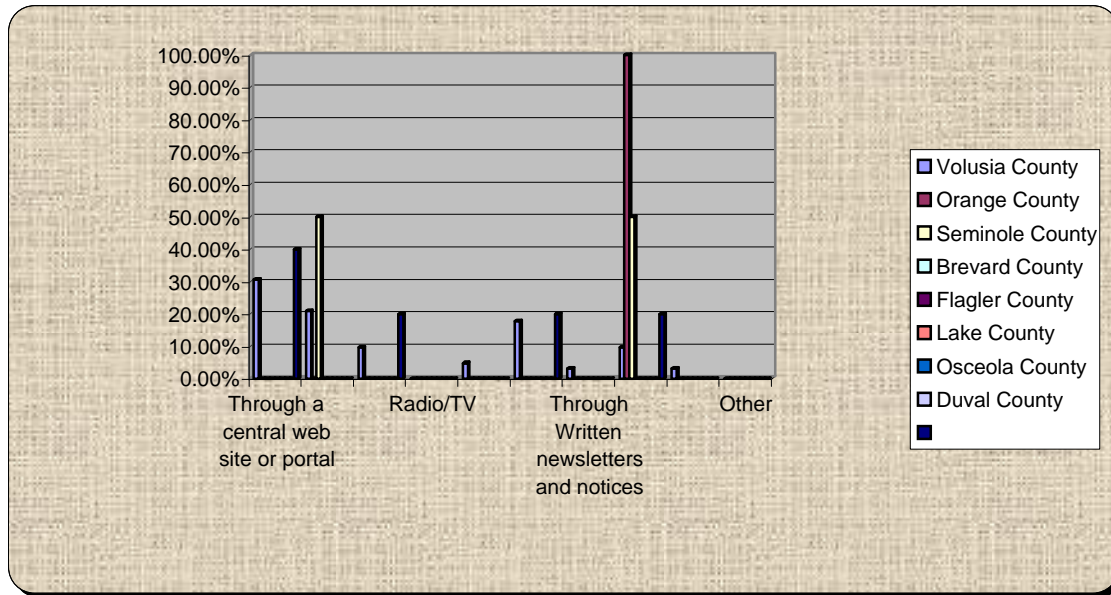
42.) I think the best way to keep up with trends, ideas, and developments regarding Volusia's growth is:

	Through a central web site or portal	Through general media – electronic	Print media	Radio/TV	Through VCOG Meetings	Through Summits like this	Through Written newsletters and notices	Through all partner, government, and organizational web sites	Through myregion.org	Other
Volusia County	34.78%	6.52%	13.04%	0.00%	4.35%	19.57%	2.17%	15.22%	4.35%	0.00%
Orange County	0.00%	0.00%	0.00%	0.00%	0.00%	0.00%	0.00%	100.00%	0.00%	0.00%
Seminole County	50.00%	50.00%	0.00%	0.00%	0.00%	0.00%	0.00%	0.00%	0.00%	0.00%
Brevard County	0%	0%	0%	0%	0%	0%	0%	0%	0%	0%
Flagler County	0%	0%	0%	0%	0%	0%	0%	0%	0%	0%
Lake County	0%	0%	0%	0%	0%	0%	0%	0%	0%	0%
Osceola County	0%	0%	0%	0%	0%	0%	0%	0%	0%	0%
Duval County	0%	0%	0%	0%	0%	0%	0%	0%	0%	0%
Other	66.67%	0.00%	0.00%	0.00%	0.00%	33.33%	0.00%	0.00%	0.00%	0.00%



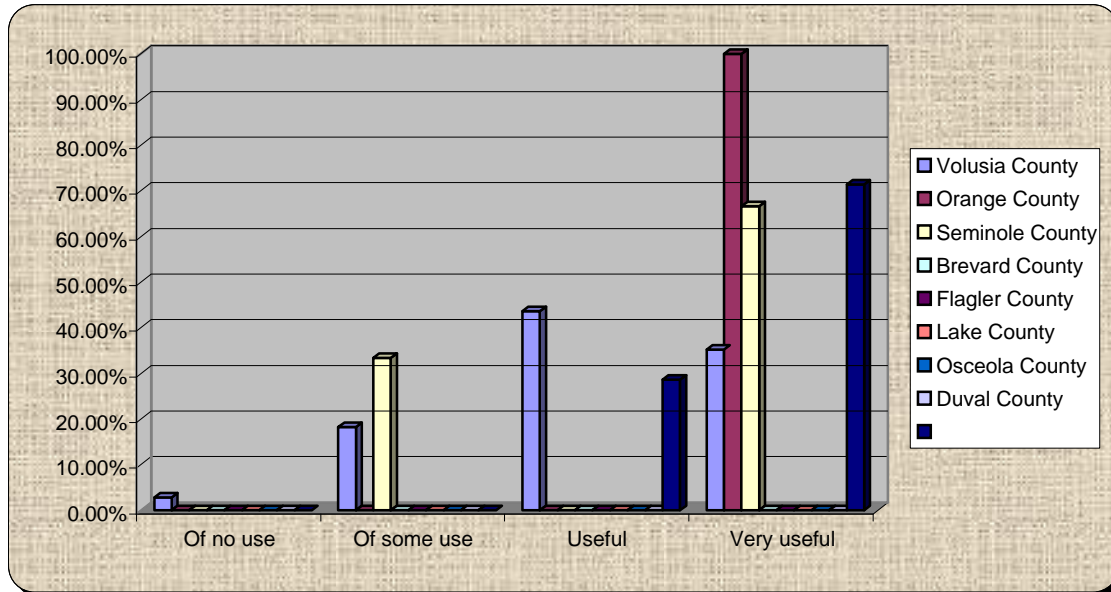
43.) I think the best way to keep up with trends, ideas, and developments regarding Volusia's growth is:

	Through a central web site or portal	Through general media – electronic	Print media	Radio/TV	Through VCOG Meetings	Through Summits like this	Through Written newsletters and notices	Through all partner, government, and organizational web sites	Through myregion.org	Other
Volusia County	30.65%	20.97%	9.68%	0.00%	4.84%	17.74%	3.23%	9.68%	3.23%	0.00%
Orange County	0.00%	0.00%	0.00%	0.00%	0.00%	0.00%	0.00%	100.00%	0.00%	0.00%
Seminole County	0.00%	50.00%	0.00%	0.00%	0.00%	0.00%	0.00%	50.00%	0.00%	0.00%
Brevard County	0%	0%	0%	0%	0%	0%	0%	0%	0%	0%
Flagler County	0%	0%	0%	0%	0%	0%	0%	0%	0%	0%
Lake County	0%	0%	0%	0%	0%	0%	0%	0%	0%	0%
Osceola County	0%	0%	0%	0%	0%	0%	0%	0%	0%	0%
Duval County	0%	0%	0%	0%	0%	0%	0%	0%	0%	0%
Other	40.00%	0.00%	20.00%	0.00%	0.00%	20.00%	0.00%	20.00%	0.00%	0.00%



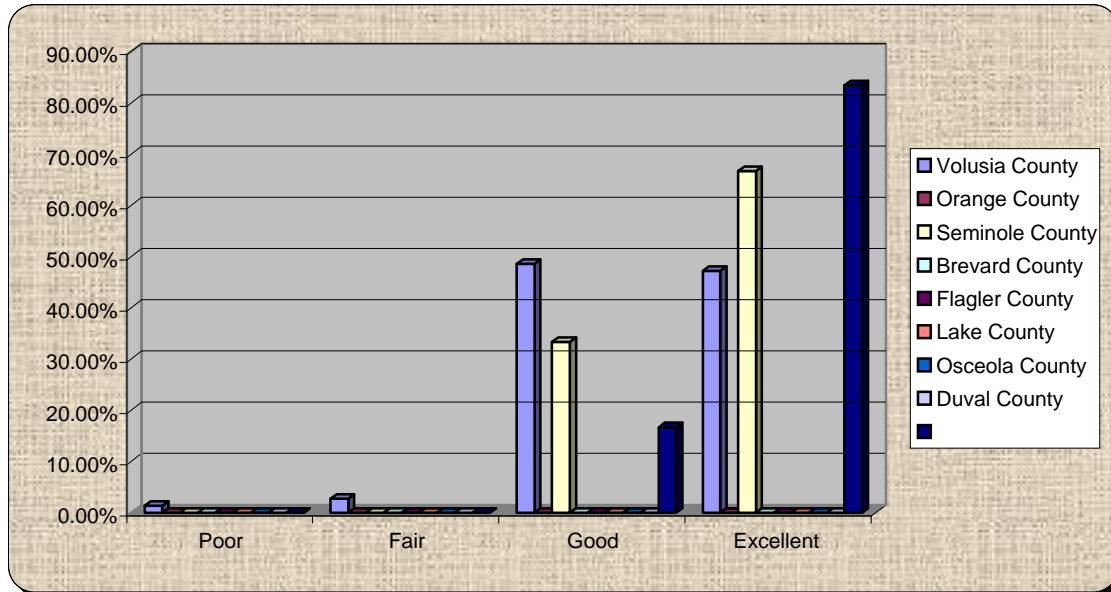
44.) For me personally - The data, information, and updates provided in this summit were:

	Of no use	Of some use	Useful	Very useful
Volusia County	2.82%	18.31%	43.66%	35.21%
Orange County	0.00%	0.00%	0.00%	100.00%
Seminole County	0.00%	33.33%	0.00%	66.67%
Brevard County	0%	0%	0%	0%
Flagler County	0%	0%	0%	0%
Lake County	0%	0%	0%	0%
Osceola County	0%	0%	0%	0%
Duval County	0%	0%	0%	0%
Other	0.00%	0.00%	28.57%	71.43%



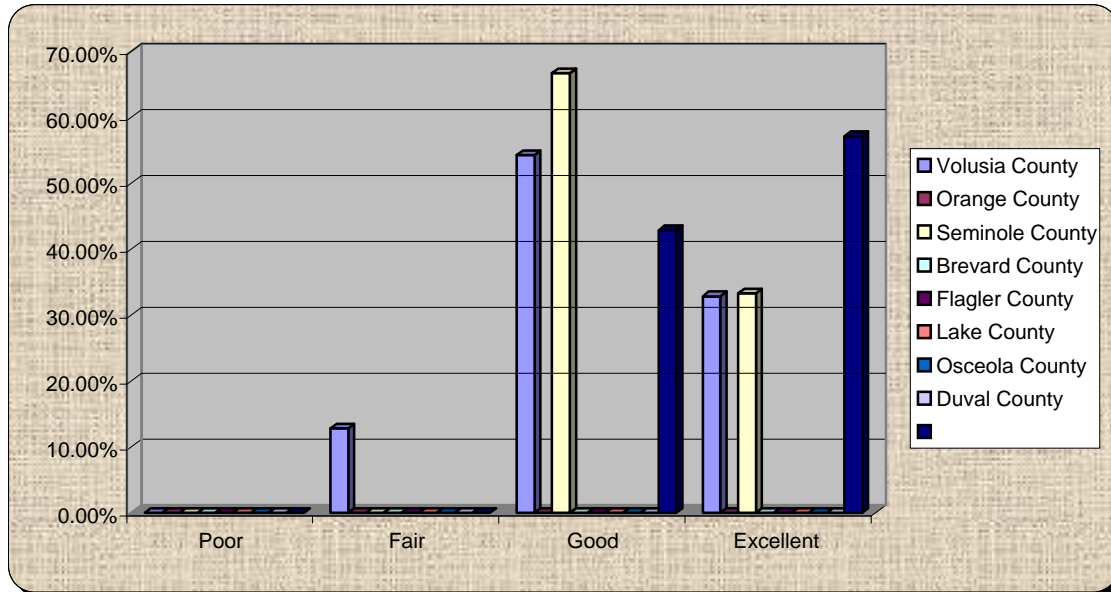
45.) As a team, Speakers, panelists, and facilitators were:

	Poor	Fair	Good	Excellent
Volusia County	1.39%	2.78%	48.61%	47.22%
Orange County	0%	0%	0%	0%
Seminole County	0.00%	0.00%	33.33%	66.67%
Brevard County	0%	0%	0%	0%
Flagler County	0%	0%	0%	0%
Lake County	0%	0%	0%	0%
Osceola County	0%	0%	0%	0%
Duval County	0%	0%	0%	0%
Other	0.00%	0.00%	16.67%	83.33%



46.) Workshops were:

	Poor	Fair	Good	Excellent
Volusia County	0.00%	12.86%	54.29%	32.86%
Orange County	0%	0%	0%	0%
Seminole County	0.00%	0.00%	66.67%	33.33%
Brevard County	0%	0%	0%	0%
Flagler County	0%	0%	0%	0%
Lake County	0%	0%	0%	0%
Osceola County	0%	0%	0%	0%
Duval County	0%	0%	0%	0%
Other	0.00%	0.00%	42.86%	57.14%



47.) How did you hear about this Summit?

	Radio	TV	Internet Web site driven	Internet email from event	Internet email from colleagues	Print Media – Newspaper	Word of Mouth or Phone	Written Invitation	Recommendation or Notice by Association, Group, Not-for-profit, or Coalition	Other
Volusia County	2.78%	0.00%	2.78%	31.94%	19.44%	8.33%	6.94%	4.17%	18.06%	5.56%
Orange County	0.00%	0.00%	0.00%	0.00%	100.00%	0.00%	0.00%	0.00%	0.00%	0.00%
Seminole County	0.00%	0.00%	0.00%	0.00%	66.67%	0.00%	33.33%	0.00%	0.00%	0.00%
Brevard County	0%	0%	0%	0%	0%	0%	0%	0%	0%	0%
Flagler County	0%	0%	0%	0%	0%	0%	0%	0%	0%	0%
Lake County	0%	0%	0%	0%	0%	0%	0%	0%	0%	0%
Osceola County	0%	0%	0%	0%	0%	0%	0%	0%	0%	0%
Duval County	0%	0%	0%	0%	0%	0%	0%	0%	0%	0%
Other	0.00%	0.00%	0.00%	57.14%	0.00%	14.29%	28.57%	0.00%	0.00%	0.00%

