

Turning Demographic Comparison

Session Name: Volusia Final Results Commute Repoll Demo.tpz

Created: 7/3/2007 3:34 PM

1.) How does it feel to get up to attend an event on a Saturday morning? Terrific

Are you
kidding
me?

	Terrific	OK	Fair	Poor	me?	Total
0-5 minutes	7	2	1	2	9	21
5-10 minutes	6	2	4	1	8	21
11-15 minutes	2	4	0	0	7	13
16-20 minutes	1	3	0	0	8	12
21-25 minutes	1	1	0	0	4	6
26-30 minutes	0	1	0	0	2	3
31-45 minutes	2	3	0	1	2	8
46-60 minutes	2	1	0	0	1	4
60-75 minutes	0	0	0	1	0	1
Do not Work	3	4	1	0	4	12

2.) What is your age?

	20-30	31-40	41-50	51-60	61-70	71-80	81-90	Over 90	Total
0-5 minutes	1	2	6	5	3	1	0	1	19
5-10 minutes	2	3	4	8	5	0	1	0	23
11-15 minutes	1	1	4	7	2	0	0	0	15
16-20 minutes	0	4	2	3	3	0	0	0	12
21-25 minutes	0	0	2	3	2	0	0	0	7
26-30 minutes	1	1	0	1	1	0	0	0	4
31-45 minutes	1	0	2	4	0	0	0	0	7
46-60 minutes	0	0	1	2	1	0	0	0	4
60-75 minutes	0	0	0	0	1	0	0	0	1
Do not Work	0	0	3	2	7	0	0	0	12

3.) How long have you lived in Volusia County?

	Non-resident	Less than 1 Year	1-2 Years	3-5 Years	6-10 Years	11-20 Years	20+ Years	Total
0-5 minutes	0	0	0	4	2	6	9	21
5-10 minutes	0	2	1	0	3	3	12	21
11-15 minutes	2	0	0	1	1	5	6	15
16-20 minutes	0	1	0	0	2	2	7	12
21-25 minutes	0	0	0	0	0	1	6	7
26-30 minutes	0	0	0	2	0	0	3	5
31-45 minutes	0	0	1	0	1	1	5	8
46-60 minutes	0	0	0	0	2	1	0	3
60-75 minutes	1	0	0	0	0	0	0	1
Do not Work	0	1	1	4	3	2	1	12

4.) What do you do for a living?

	Public Sector -Elected Official	Public Sector - Staff	Private Sector	Education	Community Based Organization	Other	Retired	Total
0-5 minutes	4	5	5	2	3	1	1	21
5-10 minutes	9	4	8	0	1	0	0	22
11-15 minutes	0	7	3	3	1	1	0	15
16-20 minutes	1	6	3	0	0	2	0	12
21-25 minutes	2	2	2	1	0	0	0	7
26-30 minutes	0	2	2	1	0	0	0	5
31-45 minutes	1	6	1	0	0	0	0	8
46-60 minutes	0	1	2	0	1	0	0	4
60-75 minutes	0	1	0	0	0	0	0	1
Do not Work	0	0	0	0	1	2	7	10

5.) Annual Income?

	Less than 25,000	25-50,000	51-75,000	76-100,000	101-125,000	126- 150,000	Above 150,000	Total
0-5 minutes	2	1	5	1	7	1	2	19
5-10 minutes	2	6	2	3	0	2	7	22
11-15 minutes	0	2	5	2	4	1	1	15
16-20 minutes	0	3	3	1	3	1	1	12
21-25 minutes	0	2	0	2	0	1	2	7
26-30 minutes	0	1	0	0	3	0	0	4
31-45 minutes	0	1	1	3	2	1	2	10
46-60 minutes	0	1	0	1	0	0	2	4
60-75 minutes	0	0	0	0	1	0	0	1
Do not Work	3	1	1	3	0	0	3	11

6.) Where do you work?

	Volusia County	Orange County	Seminole County	Brevard County	Flagler County	Lake County	Osceola County	Duval County	Other	Total
0-5 minutes	20	0	0	0	0	0	0	0	0	20
5-10 minutes	21	0	1	0	0	0	0	0	0	22
11-15 minutes	12	0	0	0	1	0	0	0	0	13
16-20 minutes	12	0	1	0	0	0	0	0	0	13
21-25 minutes	7	0	0	0	0	0	0	0	0	7
26-30 minutes	4	0	1	0	0	0	0	0	0	5
31-45 minutes	9	0	1	0	0	0	0	0	0	10
46-60 minutes	4	0	0	0	0	0	0	0	0	4
60-75 minutes	1	0	0	0	0	0	0	0	0	1
Do not Work	2	0	0	0	0	0	0	0	4	6

7.) How long does it take you to get to work?

	5-10 minutes	11-15 minutes	16-20 minutes	21-25 minutes	26-30 minutes	31-45 minutes	46-60 minutes	60-75 minutes	Above 75 minutes	Total
0-5 minutes	12	0	0	0	0	0	0	0	0	12
5-10 minutes	18	3	0	1	0	0	0	0	0	22
11-15 minutes	1	14	0	0	0	0	0	0	0	15
16-20 minutes	0	0	11	1	0	0	0	0	0	12
21-25 minutes	0	0	0	6	1	0	0	0	0	7
26-30 minutes	0	0	0	0	5	0	0	0	0	5
31-45 minutes	0	0	0	1	0	9	0	0	0	10
46-60 minutes	0	0	0	0	0	1	3	0	0	4
60-75 minutes	0	0	0	0	0	0	0	1	0	1
Do not Work	0	0	0	0	0	0	0	0	0	0

8.) What is the population of the 7 County Central Florida Region?

	2.5 million	3.5 million	4.5 million	5.5 million	Total
0-5 minutes	2	1	8	6	17
5-10 minutes	2	9	5	2	18
11-15 minutes	1	2	1	8	12
16-20 minutes	1	4	5	1	11
21-25 minutes	0	2	4	0	6
26-30 minutes	0	2	1	2	5
31-45 minutes	1	3	1	2	7
46-60 minutes	0	2	0	2	4
60-75 minutes	0	1	0	0	1
Do not Work	3	2	5	1	11

9.) What is the projected population of Central Florida in 2020?

	2.8 million	3.8 million	4.8 million	5.8 million	Total
0-5 minutes	0	0	5	14	19
5-10 minutes	0	0	10	12	22
11-15 minutes	0	0	8	7	15
16-20 minutes	0	0	8	4	12
21-25 minutes	0	0	4	3	7
26-30 minutes	0	0	3	1	4
31-45 minutes	0	0	3	6	9
46-60 minutes	0	0	2	2	4
60-75 minutes	0	0	0	1	1
Do not Work	0	1	5	5	11

10.) What is the projected population of Central Florida in 2050?

	3.1 million	5.1 million	7.1 million	9.1 million	Total
0-5 minutes	0	1	16	2	19
5-10 minutes	0	3	16	2	21
11-15 minutes	0	3	12	0	15
16-20 minutes	0	3	7	3	13
21-25 minutes	0	0	5	1	6
26-30 minutes	0	0	4	0	4
31-45 minutes	0	2	5	3	10
46-60 minutes	0	0	4	0	4
60-75 minutes	0	0	1	0	1
Do not Work	0	2	7	1	10

11.) Why are you here – Best Answer?

	I care about the future of my neighborhood	I care about protecting the environment	I care about how we grow as a county	I care about how we grow in relation to the region	I want our county to be more economically competitive	I want to network with leaders and members of my community	I care about education	Other	Total
0-5 minutes	3	6	7	1	0	0	0	4	21
5-10 minutes	1	4	9	2	4	0	0	2	22
11-15 minutes	0	3	4	3	1	1	0	2	14
16-20 minutes	1	3	6	2	1	0	0	0	13
21-25 minutes	0	1	3	2	0	0	1	0	7
26-30 minutes	1	0	3	0	0	0	1	0	5
31-45 minutes	1	1	5	1	1	1	0	0	10
46-60 minutes	0	1	0	2	0	0	0	0	3
60-75 minutes	0	0	0	1	0	0	0	0	1
Do not Work	3	2	4	2	1	0	0	0	12

12.) How informed am I about myregion.org? Scale of 1 to 5, 5 well informed and 1 know almost nothing

	Know almost nothing	Little knowledge	Moderate knowledge	Well informed	Total
0-5 minutes	2	6	7	4	19
5-10 minutes	3	4	7	8	22
11-15 minutes	1	2	7	4	14
16-20 minutes	3	5	4	1	13
21-25 minutes	0	2	2	3	7
26-30 minutes	1	2	0	2	5
31-45 minutes	2	1	2	5	10
46-60 minutes	2	1	1	0	4
60-75 minutes	0	0	0	0	0
Do not Work	4	2	5	1	12

13.) How informed am I about growth planning and priorities in Volusia?

	Know almost nothing	Little knowledge	Moderate knowledge	Well informed	Total
0-5 minutes	0	2	11	6	19
5-10 minutes	0	3	7	9	19
11-15 minutes	0	4	2	7	13
16-20 minutes	0	3	7	2	12
21-25 minutes	0	1	1	5	7
26-30 minutes	0	2	0	3	5
31-45 minutes	0	2	3	5	10
46-60 minutes	0	0	1	3	4
60-75 minutes	0	0	0	0	0
Do not Work	1	3	6	2	12

14.) Do you support minimum environmental standards countywide?

	Yes	No	Undecided	Uninformed	Total
0-5 minutes	17	2	0	1	20
5-10 minutes	15	3	2	1	21
11-15 minutes	8	2	2	1	13
16-20 minutes	12	0	0	1	13
21-25 minutes	4	0	2	0	6
26-30 minutes	4	1	0	0	5
31-45 minutes	10	0	0	0	10
46-60 minutes	4	0	0	0	4
60-75 minutes	1	0	0	0	1
Do not Work	10	0	0	2	12

15.) Do you believe protecting natural areas will benefit your quality of life?

	Yes	No	Undecided	Uninformed	Total
0-5 minutes	17	1	1	0	19
5-10 minutes	20	1	0	0	21
11-15 minutes	13	0	0	0	13
16-20 minutes	10	1	0	0	11
21-25 minutes	7	0	0	0	7
26-30 minutes	4	1	0	0	5
31-45 minutes	9	0	0	0	9
46-60 minutes	3	0	0	0	3
60-75 minutes	1	0	0	0	1
Do not Work	12	0	0	0	12

16.) Do you support smart growth tools such as transfer of development rights to protect rural and natural areas?

	Yes	No	Undecided	Uninformed	Total
0-5 minutes	14	2	1	1	18
5-10 minutes	14	1	3	2	20
11-15 minutes	10	1	3	0	14
16-20 minutes	8	1	1	0	10
21-25 minutes	5	0	2	0	7
26-30 minutes	3	1	0	1	5
31-45 minutes	7	0	2	1	10
46-60 minutes	3	0	0	0	3
60-75 minutes	1	0	0	0	1
Do not Work	5	0	4	2	11

17.) Re-poll: How long does it take you to get to work?

	0-5 minutes	5-10 minutes	11-15 minutes	16-20 minutes	21-25 minutes	26-30 minutes	31-45 minutes	46-60 minutes	60-75 minutes	Do not Work	Total
0-5 minutes	21	0	0	0	0	0	0	0	0	0	21
5-10 minutes	0	23	0	0	0	0	0	0	0	0	23
11-15 minutes	0	0	16	0	0	0	0	0	0	0	16
16-20 minutes	0	0	0	13	0	0	0	0	0	0	13
21-25 minutes	0	0	0	0	7	0	0	0	0	0	7
26-30 minutes	0	0	0	0	0	6	0	0	0	0	6
31-45 minutes	0	0	0	0	0	0	10	0	0	0	10
46-60 minutes	0	0	0	0	0	0	0	4	0	0	4
60-75 minutes	0	0	0	0	0	0	0	0	2	0	2
Do not Work	0	0	0	0	0	0	0	0	0	13	13

18.) What is the population of Volusia County?

	390,000	490,000	590,000	690,000	Total
0-5 minutes	5	12	2	0	19
5-10 minutes	3	13	3	0	19
11-15 minutes	3	10	2	0	15
16-20 minutes	2	8	2	0	12
21-25 minutes	0	6	0	0	6
26-30 minutes	1	2	1	0	4
31-45 minutes	1	7	1	0	9
46-60 minutes	2	2	0	0	4
60-75 minutes	0	1	0	0	1
Do not Work	5	3	3	0	11

19.) What is the projected population of Volusia County in 2020?

	333,000	533,000	633,000	733,000	Total
0-5 minutes	0	2	14	1	17
5-10 minutes	0	9	9	2	20
11-15 minutes	0	6	6	3	15
16-20 minutes	0	3	8	1	12
21-25 minutes	0	2	5	0	7
26-30 minutes	0	2	3	1	6
31-45 minutes	0	2	6	2	10
46-60 minutes	0	1	1	0	2
60-75 minutes	0	1	0	1	2
Do not Work	0	3	5	2	10

20.) What is the projected population of Volusia County in 2050?

	574,000	674,000	774,000	874,000	Total
0-5 minutes	0	2	9	8	19
5-10 minutes	0	1	12	7	20
11-15 minutes	0	2	10	2	14
16-20 minutes	0	0	8	3	11
21-25 minutes	0	0	4	3	7
26-30 minutes	0	0	4	1	5
31-45 minutes	0	1	6	3	10
46-60 minutes	0	0	2	0	2
60-75 minutes	0	0	2	0	2
Do not Work	0	0	10	1	11

21.) Do you believe sustainable communities will support a strong local economy?

	Yes	No	Don't Know	Total
0-5 minutes	15	1	3	19
5-10 minutes	18	1	3	22
11-15 minutes	8	1	2	11
16-20 minutes	9	0	3	12
21-25 minutes	6	0	0	6
26-30 minutes	5	0	1	6
31-45 minutes	8	0	1	9
46-60 minutes	4	0	0	4
60-75 minutes	2	0	0	2
Do not Work	8	2	3	13

22.) How many days per month do you leave the borders of Volusia for commercial, educational, entertainment, healthcare or other activities?

	0	1-5	6-10	11-15	16-20	21-25	25-30	31 and up.	Total
0-5 minutes	3	8	6	2	0	0	0	0	19
5-10 minutes	2	16	2	0	0	1	0	1	22
11-15 minutes	1	9	1	0	0	1	0	1	13
16-20 minutes	2	6	1	0	0	0	0	2	11
21-25 minutes	1	4	1	1	0	0	0	0	7
26-30 minutes	0	2	2	1	0	0	0	0	5
31-45 minutes	3	3	1	0	0	1	1	0	9
46-60 minutes	0	2	1	0	0	0	0	0	3
60-75 minutes	0	0	0	0	0	0	0	1	1
Do not Work	2	3	1	4	0	0	0	0	10

23.) Where do you reside?

	East Volusia	West Volusia	Don't Reside in Volusia	Total
0-5 minutes	10	10	0	20
5-10 minutes	9	10	1	20
11-15 minutes	6	6	0	12
16-20 minutes	9	2	1	12
21-25 minutes	5	1	0	6
26-30 minutes	5	0	0	5
31-45 minutes	7	2	0	9
46-60 minutes	1	1	1	3
60-75 minutes	0	0	2	2
Do not Work	6	6	1	13

24.) What is VCOG:

	Very Collegial Operating Group	Vast Collection of Gerontologis ts	Volusia Council of Governments	Volusia Community on Growth	Total
0-5 minutes	0	1	16	2	19
5-10 minutes	0	1	20	0	21
11-15 minutes	0	1	11	0	12
16-20 minutes	0	1	11	0	12
21-25 minutes	0	0	7	0	7
26-30 minutes	0	0	6	0	6
31-45 minutes	0	0	9	0	9
46-60 minutes	0	0	3	0	3
60-75 minutes	1	0	1	0	2
Do not Work	0	0	10	1	11

25.) Accelerating deployment of the right transportation technology will make a difference in achieving a sustainable future

	Yes	No	Unsure	Uninformed	Total
0-5 minutes	16	1	0	0	17
5-10 minutes	13	0	0	0	13
11-15 minutes	9	1	0	0	10
16-20 minutes	6	0	1	0	7
21-25 minutes	5	0	0	0	5
26-30 minutes	2	0	1	0	3
31-45 minutes	6	0	1	1	8
46-60 minutes	3	0	0	0	3
60-75 minutes	0	2	0	0	2
Do not Work	6	1	3	0	10

26.) Commuter rail is a vital component of our sustainable community

	Yes	No	Unsure	Uninformed	Total
0-5 minutes	15	1	1	0	17
5-10 minutes	15	1	1	0	17
11-15 minutes	10	1	0	0	11
16-20 minutes	4	1	1	0	6
21-25 minutes	4	0	1	0	5
26-30 minutes	2	0	2	0	4
31-45 minutes	5	1	1	0	7
46-60 minutes	2	1	0	0	3
60-75 minutes	1	1	0	0	2
Do not Work	9	2	1	0	12

27.) I understand how A & B operate and what scenarios they represent

	Yes	No	Unsure	Uninformed	Total
0-5 minutes	11	1	5	1	18
5-10 minutes	9	1	6	0	16
11-15 minutes	6	2	2	0	10
16-20 minutes	5	1	1	0	7
21-25 minutes	2	0	2	0	4
26-30 minutes	1	1	2	0	4
31-45 minutes	5	1	1	1	8
46-60 minutes	2	0	1	0	3
60-75 minutes	1	0	1	0	2
Do not Work	10	0	3	0	13

28.) Communicating the complexity of systems and infrastructure is our most serious barrier to success

	Yes	No	Unsure	Uninformed	Total
0-5 minutes	14	2	2	0	18
5-10 minutes	8	6	2	0	16
11-15 minutes	9	1	0	0	10
16-20 minutes	4	1	1	0	6
21-25 minutes	4	1	0	0	5
26-30 minutes	2	2	0	0	4
31-45 minutes	5	2	0	0	7
46-60 minutes	2	0	0	0	2
60-75 minutes	1	0	1	0	2
Do not Work	8	2	2	0	12

29.) We can't achieve our vision without culture change

	Agree	Disagree	Unsure	Uninformed	Total
0-5 minutes	16	2	0	0	18
5-10 minutes	14	1	1	0	16
11-15 minutes	8	0	1	0	9
16-20 minutes	6	1	0	0	7
21-25 minutes	4	0	0	0	4
26-30 minutes	4	0	0	0	4
31-45 minutes	8	0	0	0	8
46-60 minutes	3	0	0	0	3
60-75 minutes	2	0	0	0	2
Do not Work	9	3	0	0	12

30.) Achieving our vision requires:

	World class K-12 performance	Best in nation	Best in Florida	Best in region	Stay the same	Not a factor	Total
0-5 minutes	8	2	4	3	0	1	18
5-10 minutes	5	4	5	2	0	1	17
11-15 minutes	3	3	1	2	0	1	10
16-20 minutes	1	1	3	2	0	0	7
21-25 minutes	0	3	1	1	0	0	5
26-30 minutes	1	0	2	0	0	1	4
31-45 minutes	1	1	1	3	0	1	7
46-60 minutes	0	1	0	2	0	0	3
60-75 minutes	0	1	0	0	0	0	1
Do not Work	0	1	6	1	1	4	13

31.) I want to keep up with this effort

	Yes	No	Unsure	Uninformed	Total
0-5 minutes	18	0	0	0	18
5-10 minutes	14	0	1	0	15
11-15 minutes	10	0	0	0	10
16-20 minutes	6	1	0	0	7
21-25 minutes	5	0	0	0	5
26-30 minutes	3	0	0	0	3
31-45 minutes	7	1	0	0	8
46-60 minutes	3	0	0	0	3
60-75 minutes	2	0	0	0	2
Do not Work	13	0	0	0	13

32.) What is the most important and credible message for your neighbor?

	We can achieve our vision for low or no cost	Our community governments can and are working together	Our community is behind the vision	Other communities have or are doing this with success	Our region cares	State policy and regulations are supportive	Other	Total
0-5 minutes	0	9	0	2	4	0	2	17
5-10 minutes	0	6	3	2	2	0	4	17
11-15 minutes	0	5	2	1	0	0	1	9
16-20 minutes	0	4	1	1	0	0	1	7
21-25 minutes	0	2	1	0	0	0	1	4
26-30 minutes	0	2	0	1	1	0	0	4
31-45 minutes	0	3	0	1	1	1	2	8
46-60 minutes	0	1	0	1	0	0	1	3
60-75 minutes	0	0	0	1	1	0	0	2
Do not Work	0	4	1	1	4	0	2	12

33.) Would you pay the extra money to bypass congestion?

	Yes	No	Unsure	Uninformed	Total
0-5 minutes	13	3	0	0	16
5-10 minutes	13	1	2	0	16
11-15 minutes	6	3	1	0	10
16-20 minutes	4	1	1	0	6
21-25 minutes	3	0	1	0	4
26-30 minutes	2	1	1	0	4
31-45 minutes	8	0	0	0	8
46-60 minutes	3	0	0	0	3
60-75 minutes	1	1	0	0	2
Do not Work	9	4	0	0	13

34.) How informed am I about myregion.org? Scale of 1 to 4, 4 well informed and 1 know almost nothing

	Know almost nothing	Little knowledge	Moderate knowledge	Well informed	Total
0-5 minutes	2	1	9	5	17
5-10 minutes	0	3	4	9	16
11-15 minutes	0	2	4	4	10
16-20 minutes	1	0	4	1	6
21-25 minutes	0	0	2	2	4
26-30 minutes	1	0	2	1	4
31-45 minutes	0	2	2	4	8
46-60 minutes	0	1	2	0	3
60-75 minutes	1	0	0	1	2
Do not Work	1	1	6	4	12

35.) How informed am I about growth planning and priorities in Volusia?

	Know almost nothing	Little knowledge	Moderate knowledge	Well informed	Total
0-5 minutes	0	0	10	6	16
5-10 minutes	0	0	8	7	15
11-15 minutes	0	0	4	6	10
16-20 minutes	0	0	3	4	7
21-25 minutes	0	0	1	4	5
26-30 minutes	0	0	2	2	4
31-45 minutes	0	2	0	5	7
46-60 minutes	0	0	1	2	3
60-75 minutes	0	0	1	1	2
Do not Work	0	1	4	5	10

36.) Do you support minimum environmental standards countywide?

	Yes	No	Undecided	Uninformed	Total
0-5 minutes	15	0	0	0	15
5-10 minutes	13	2	0	0	15
11-15 minutes	7	1	2	0	10
16-20 minutes	7	0	0	0	7
21-25 minutes	4	0	0	0	4
26-30 minutes	3	1	0	0	4
31-45 minutes	8	0	0	0	8
46-60 minutes	2	0	0	0	2
60-75 minutes	1	0	0	0	1
Do not Work	10	0	1	0	11

37.) Do you believe protecting natural areas will benefit your quality of life?

	Yes	No	Undecided	Uninformed	Total
0-5 minutes	16	0	0	0	16
5-10 minutes	15	0	0	0	15
11-15 minutes	9	1	0	0	10
16-20 minutes	7	0	0	0	7
21-25 minutes	5	0	0	0	5
26-30 minutes	4	0	0	0	4
31-45 minutes	7	0	0	0	7
46-60 minutes	3	0	0	0	3
60-75 minutes	2	0	0	0	2
Do not Work	11	0	0	0	11

38.) Do you support smart growth tools such as transfer of development rights to protect rural and natural areas?

	Yes	No	Undecided	Uninformed	Total
0-5 minutes	12	2	4	0	18
5-10 minutes	13	1	2	0	16
11-15 minutes	7	0	3	0	10
16-20 minutes	1	1	2	0	4
21-25 minutes	4	0	0	0	4
26-30 minutes	3	0	1	0	4
31-45 minutes	6	1	0	1	8
46-60 minutes	2	1	0	0	3
60-75 minutes	0	1	1	0	2
Do not Work	8	0	5	0	13

39.) How did you hear about this Summit?

	Radio	TV	Internet	Print Media – Newspaper	Word of Mouth or Phone	Written Invitation	Recommendation or Notice by Association, Group, Not-for- profit, or Coalition	Other	Total
0-5 minutes	1	0	2	1	0	3	6	1	14
5-10 minutes	0	0	3	0	1	5	5	1	15
11-15 minutes	0	0	1	0	2	2	4	0	9
16-20 minutes	0	0	1	0	1	2	0	0	4
21-25 minutes	0	0	2	0	0	0	2	0	4
26-30 minutes	0	0	0	1	1	0	1	0	3
31-45 minutes	0	0	2	1	1	1	2	0	7
46-60 minutes	0	0	0	2	0	0	1	0	3
60-75 minutes	0	0	0	1	1	0	0	0	2
Do not Work	0	0	5	3	0	0	1	0	9

40.) How did you hear about this Summit?

	Radio	TV	Internet	Print Media – Newspaper	Word of Mouth or Phone	Written Invitation	Recommendation or Notice by Association, Group, Not-for- profit, or Coalition	Other	Total
0-5 minutes	1	0	9	2	0	0	4	2	18
5-10 minutes	0	0	8	0	1	2	3	1	15
11-15 minutes	0	0	4	0	2	0	3	1	10
16-20 minutes	0	0	3	0	0	1	0	0	4
21-25 minutes	0	0	2	0	0	0	3	0	5
26-30 minutes	0	0	1	1	2	0	0	0	4
31-45 minutes	0	0	4	0	0	1	2	0	7
46-60 minutes	0	0	1	2	0	0	0	0	3
60-75 minutes	0	0	0	0	1	0	0	0	1
Do not Work	0	0	8	3	0	0	0	0	11

41.) I Feel I have improved access to data and information going forward

	Yes	No	no change	unsure	Total
0-5 minutes	17	1	0	0	18
5-10 minutes	13	0	3	0	16
11-15 minutes	6	0	3	1	10
16-20 minutes	4	0	0	0	4
21-25 minutes	2	0	1	1	4
26-30 minutes	3	0	1	0	4
31-45 minutes	6	1	1	0	8
46-60 minutes	3	0	0	0	3
60-75 minutes	1	0	0	0	1
Do not Work	11	0	1	0	12

42.) I think the best way to keep up with trends, ideas, and developments regarding Voluisa's growth is:

	Through a central web site or portal	Through general media – electronic	Print media	Radio/TV	Through VCOG Meetings	Through Summits like this	Through Written newsletters and notices	Through partner, government, and organization	Through myregion.org	Other	Total
0-5 minutes	2	0	2	0	0	3	0	1	1	0	9
5-10 minutes	5	1	2	0	0	2	0	2	0	0	12
11-15 minutes	3	0	0	0	0	1	0	1	0	0	5
16-20 minutes	1	1	0	0	0	0	0	0	0	0	2
21-25 minutes	0	0	0	0	0	0	1	1	0	0	2
26-30 minutes	0	1	1	0	0	0	0	0	0	0	2
31-45 minutes	2	1	1	0	1	0	0	0	1	0	6
46-60 minutes	1	0	0	0	0	0	0	0	0	0	1
60-75 minutes	1	0	0	0	0	0	0	0	0	0	1
Do not Work	3	1	0	0	0	1	1	2	0	0	8

43.) I think the best way to keep up with trends, ideas, and developments regarding Voluisa's growth is:

	Through a central web site or portal	Through general media – electronic	Print media	Radio/TV	Through VCOG Meetings	Through Summits like this	Through Written newsletters and notices	Through all partner, government, and organization al web sites	Through myregion.org	Other	Total
0-5 minutes	3	2	3	0	0	6	0	2	0	0	16
5-10 minutes	3	6	1	0	1	2	0	0	0	0	13
11-15 minutes	4	0	0	0	0	2	1	0	1	0	8
16-20 minutes	0	3	0	0	0	0	0	0	1	0	4
21-25 minutes	1	2	1	0	0	0	0	1	0	0	5
26-30 minutes	0	1	0	0	0	1	0	1	0	0	3
31-45 minutes	3	0	1	0	1	1	0	0	0	0	6
46-60 minutes	1	0	0	0	0	0	1	1	0	0	3
60-75 minutes	1	0	1	0	0	0	0	0	0	0	2
Do not Work	4	2	1	0	0	0	0	0	0	0	7

44.) For me personally - The data, information, and updates provided in this summit were:

	Of no use	Of some use	Useful	Very useful	Total
0-5 minutes	0	3	6	8	17
5-10 minutes	0	1	10	4	15
11-15 minutes	0	5	2	4	11
16-20 minutes	0	1	2	1	4
21-25 minutes	1	1	1	1	4
26-30 minutes	0	1	1	2	4
31-45 minutes	1	1	3	3	8
46-60 minutes	0	0	1	2	3
60-75 minutes	0	0	1	0	1
Do not Work	0	1	3	8	12

45.) As a team, Speakers, panelists, and facilitators were:

	Poor	Fair	Good	Excellent	Total
0-5 minutes	0	1	10	7	18
5-10 minutes	0	0	7	8	15
11-15 minutes	0	1	3	6	10
16-20 minutes	0	0	1	3	4
21-25 minutes	0	0	2	2	4
26-30 minutes	0	0	1	3	4
31-45 minutes	1	0	4	3	8
46-60 minutes	0	0	2	1	3
60-75 minutes	0	0	1	0	1
Do not Work	0	0	5	8	13

46.) Workshops were:

	Poor	Fair	Good	Excellent	Total
0-5 minutes	0	2	8	8	18
5-10 minutes	0	0	11	3	14
11-15 minutes	0	3	4	4	11
16-20 minutes	0	1	2	1	4
21-25 minutes	0	1	2	2	5
26-30 minutes	0	1	1	2	4
31-45 minutes	0	1	3	4	8
46-60 minutes	0	0	2	1	3
60-75 minutes	0	0	1	0	1
Do not Work	0	0	8	5	13

47.) How did you hear about this Summit?

	Radio	TV	Internet Web site driven	Internet email from event	Internet email from colleagues	Print Media – Newspaper	Word of Mouth or Phone	Written Invitation	Recommen- dation or Notice by Association, Group, Not- for-profit, or Coalition	Other	Total
0-5 minutes	2	0	0	5	5	2	0	0	4	0	18
5-10 minutes	0	0	1	7	2	0	0	1	2	2	15
11-15 minutes	1	0	0	2	3	0	2	0	1	2	11
16-20 minutes	0	0	1	0	2	0	0	1	0	0	4
21-25 minutes	0	0	0	2	0	0	0	0	2	0	4
26-30 minutes	0	0	0	0	1	1	1	0	0	0	3
31-45 minutes	0	0	0	3	1	0	1	1	2	0	8
46-60 minutes	0	0	0	1	0	2	0	0	0	0	3
60-75 minutes	0	0	0	0	0	1	1	0	0	0	2
Do not Work	0	0	1	7	1	3	0	0	0	0	12

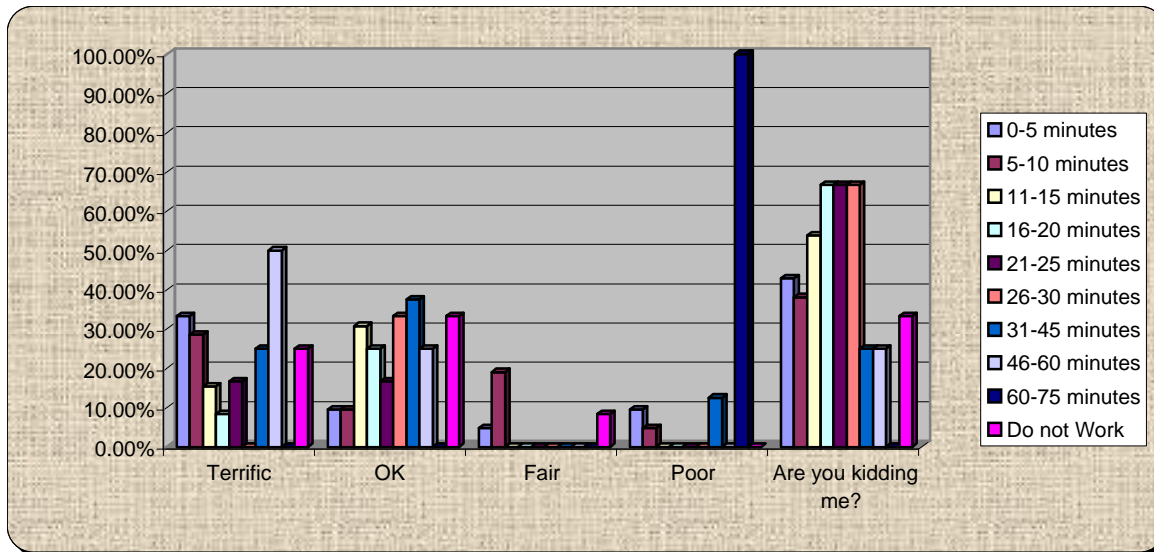
Turning Graphical Comparison

Session Name: Volusia Final Results Commute Repoll Demo.tpz

Created: 7/3/2007 3:35 PM

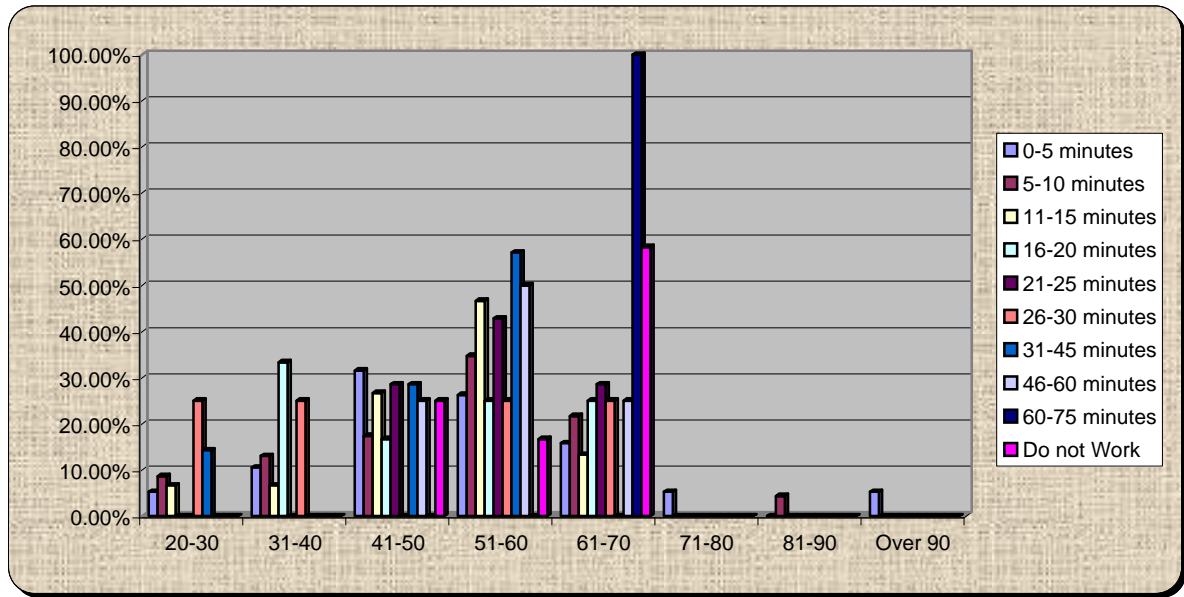
1.) How does it feel to get up to attend an event on a Saturday morning? Terrific

	Terrific	OK	Fair	Poor	Are you kidding me?
0-5 minutes	33.33%	9.52%	4.76%	9.52%	42.86%
5-10 minutes	28.57%	9.52%	19.05%	4.76%	38.10%
11-15 minutes	15.38%	30.77%	0.00%	0.00%	53.85%
16-20 minutes	8.33%	25.00%	0.00%	0.00%	66.67%
21-25 minutes	16.67%	16.67%	0.00%	0.00%	66.67%
26-30 minutes	0.00%	33.33%	0.00%	0.00%	66.67%
31-45 minutes	25.00%	37.50%	0.00%	12.50%	25.00%
46-60 minutes	50.00%	25.00%	0.00%	0.00%	25.00%
60-75 minutes	0.00%	0.00%	0.00%	100.00%	0.00%
Do not Work	25.00%	33.33%	8.33%	0.00%	33.33%



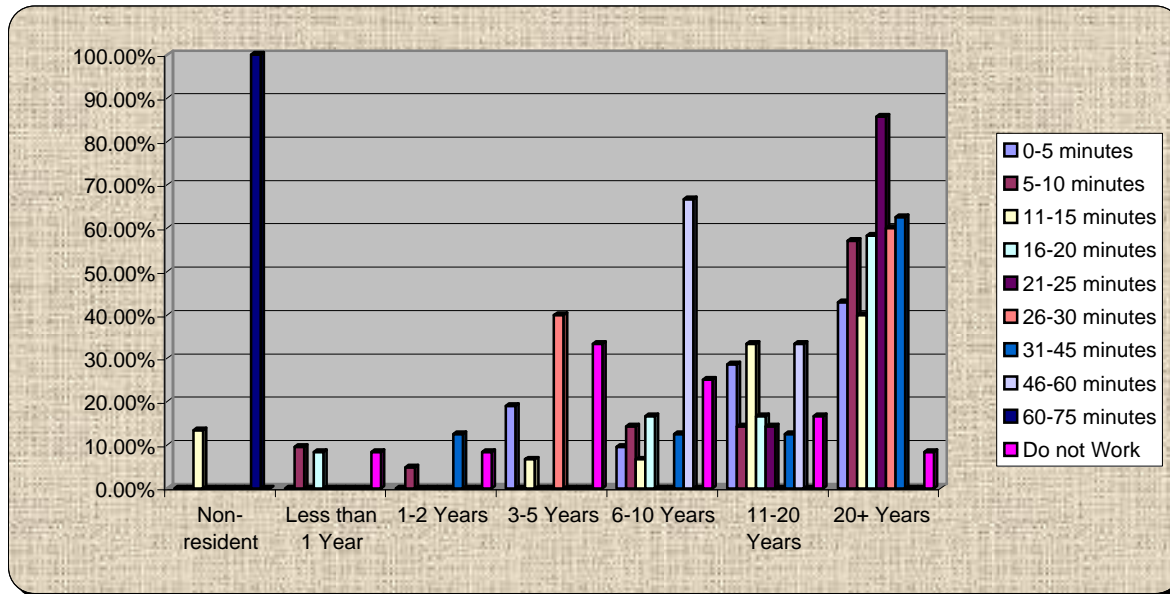
2.) What is your age?

	20-30	31-40	41-50	51-60	61-70	71-80	81-90	Over 90
0-5 minutes	5.26%	10.53%	31.58%	26.32%	15.79%	5.26%	0.00%	5.26%
5-10 minutes	8.70%	13.04%	17.39%	34.78%	21.74%	0.00%	4.35%	0.00%
11-15 minutes	6.67%	6.67%	26.67%	46.67%	13.33%	0.00%	0.00%	0.00%
16-20 minutes	0.00%	33.33%	16.67%	25.00%	25.00%	0.00%	0.00%	0.00%
21-25 minutes	0.00%	0.00%	28.57%	42.86%	28.57%	0.00%	0.00%	0.00%
26-30 minutes	25.00%	25.00%	0.00%	25.00%	25.00%	0.00%	0.00%	0.00%
31-45 minutes	14.29%	0.00%	28.57%	57.14%	0.00%	0.00%	0.00%	0.00%
46-60 minutes	0.00%	0.00%	25.00%	50.00%	25.00%	0.00%	0.00%	0.00%
60-75 minutes	0.00%	0.00%	0.00%	0.00%	100.00%	0.00%	0.00%	0.00%
Do not Work	0.00%	0.00%	25.00%	16.67%	58.33%	0.00%	0.00%	0.00%



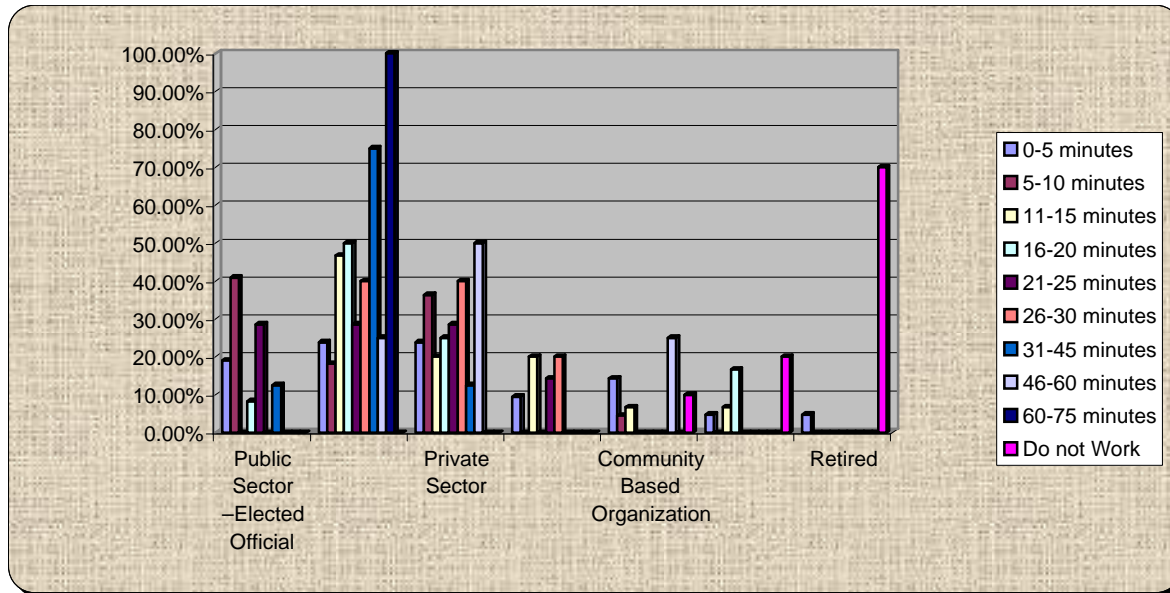
3.) How long have you lived in Volusia County?

	Non-resident	Less than 1 Year	1-2 Years	3-5 Years	6-10 Years	11-20 Years	20+ Years
0-5 minutes	0.00%	0.00%	0.00%	19.05%	9.52%	28.57%	42.86%
5-10 minutes	0.00%	9.52%	4.76%	0.00%	14.29%	14.29%	57.14%
11-15 minutes	13.33%	0.00%	0.00%	6.67%	6.67%	33.33%	40.00%
16-20 minutes	0.00%	8.33%	0.00%	0.00%	16.67%	16.67%	58.33%
21-25 minutes	0.00%	0.00%	0.00%	0.00%	0.00%	14.29%	85.71%
26-30 minutes	0.00%	0.00%	0.00%	40.00%	0.00%	0.00%	60.00%
31-45 minutes	0.00%	0.00%	12.50%	0.00%	12.50%	12.50%	62.50%
46-60 minutes	0.00%	0.00%	0.00%	0.00%	66.67%	33.33%	0.00%
60-75 minutes	100.00%	0.00%	0.00%	0.00%	0.00%	0.00%	0.00%
Do not Work	0.00%	8.33%	8.33%	33.33%	25.00%	16.67%	8.33%



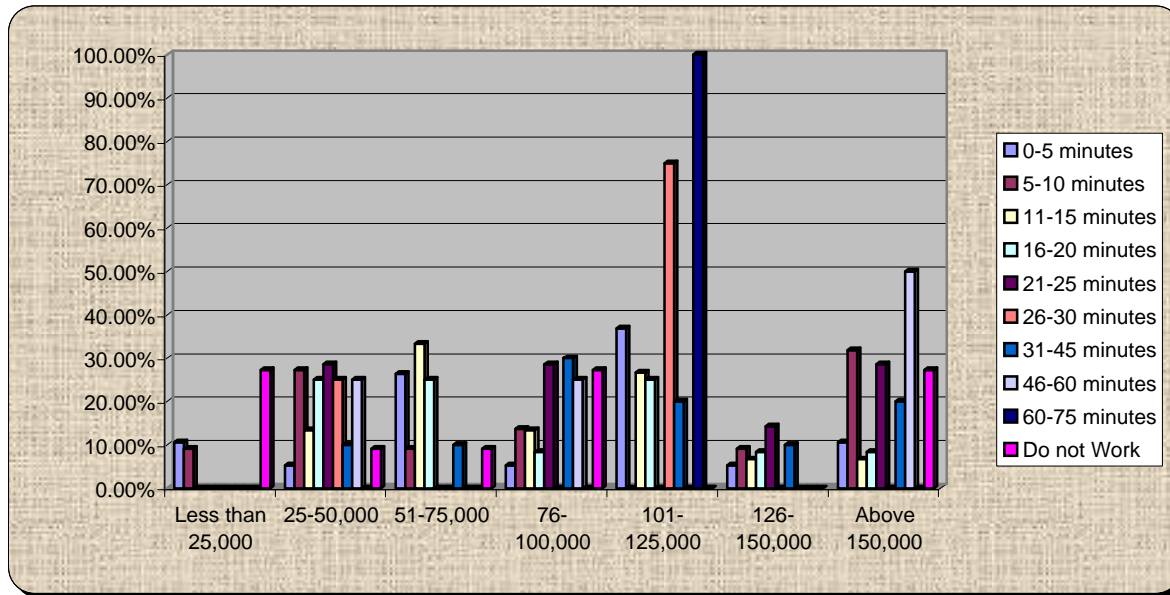
4.) What do you do for a living?

	Public Sector -Elected Official	Public Sector - Staff	Private Sector	Education	Community Based Organization	Other	Retired
0-5 minutes	19.05%	23.81%	23.81%	9.52%	14.29%	4.76%	4.76%
5-10 minutes	40.91%	18.18%	36.36%	0.00%	4.55%	0.00%	0.00%
11-15 minutes	0.00%	46.67%	20.00%	20.00%	6.67%	6.67%	0.00%
16-20 minutes	8.33%	50.00%	25.00%	0.00%	0.00%	16.67%	0.00%
21-25 minutes	28.57%	28.57%	28.57%	14.29%	0.00%	0.00%	0.00%
26-30 minutes	0.00%	40.00%	40.00%	20.00%	0.00%	0.00%	0.00%
31-45 minutes	12.50%	75.00%	12.50%	0.00%	0.00%	0.00%	0.00%
46-60 minutes	0.00%	25.00%	50.00%	0.00%	25.00%	0.00%	0.00%
60-75 minutes	0.00%	100.00%	0.00%	0.00%	0.00%	0.00%	0.00%
Do not Work	0.00%	0.00%	0.00%	0.00%	10.00%	20.00%	70.00%



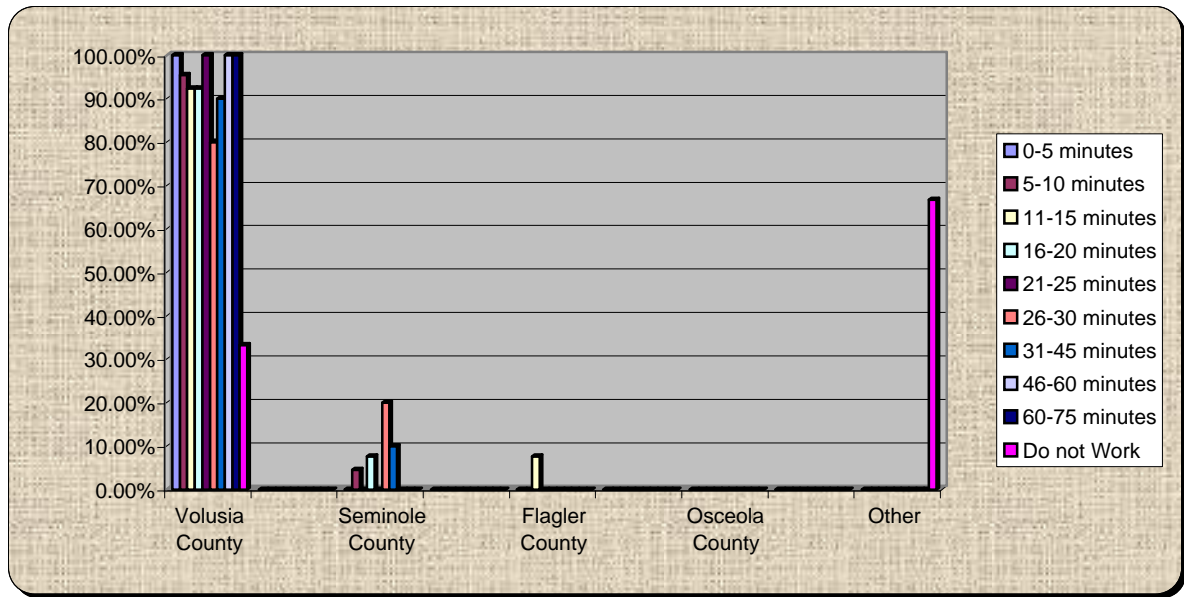
5.) Annual Income?

	Less than 25,000	25-50,000	51-75,000	76-100,000	101-125,000	126-150,000	Above 150,000
0-5 minutes	10.53%	5.26%	26.32%	5.26%	36.84%	5.26%	10.53%
5-10 minutes	9.09%	27.27%	9.09%	13.64%	0.00%	9.09%	31.82%
11-15 minutes	0.00%	13.33%	33.33%	13.33%	26.67%	6.67%	6.67%
16-20 minutes	0.00%	25.00%	25.00%	8.33%	25.00%	8.33%	8.33%
21-25 minutes	0.00%	28.57%	0.00%	28.57%	0.00%	14.29%	28.57%
26-30 minutes	0.00%	25.00%	0.00%	0.00%	75.00%	0.00%	0.00%
31-45 minutes	0.00%	10.00%	10.00%	30.00%	20.00%	10.00%	20.00%
46-60 minutes	0.00%	25.00%	0.00%	25.00%	0.00%	0.00%	50.00%
60-75 minutes	0.00%	0.00%	0.00%	0.00%	100.00%	0.00%	0.00%
Do not Work	27.27%	9.09%	9.09%	27.27%	0.00%	0.00%	27.27%



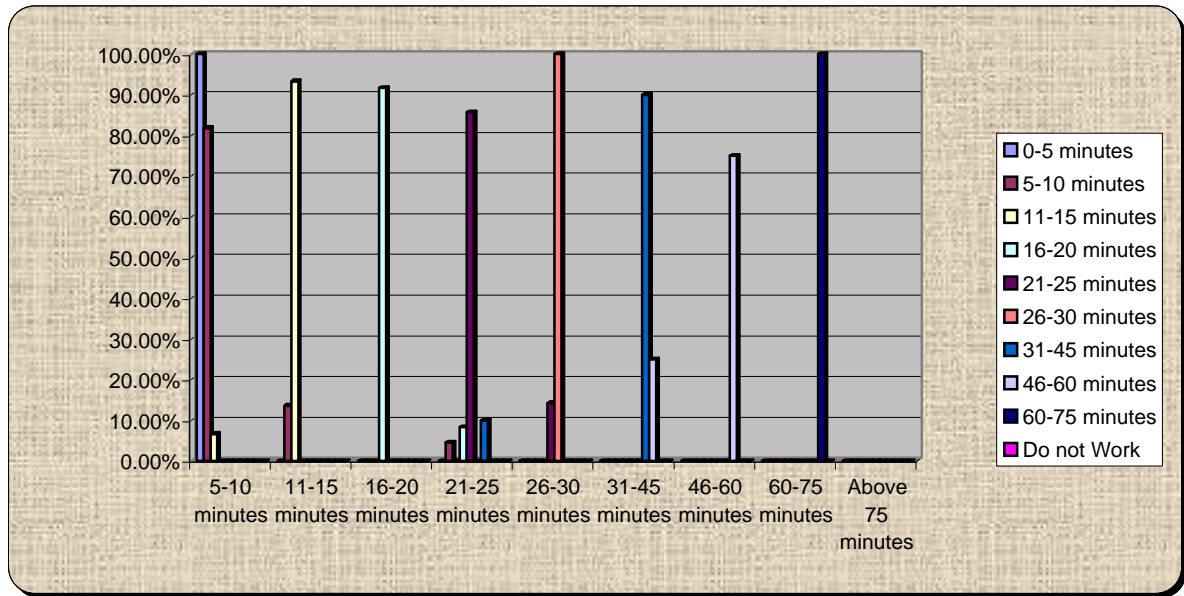
6.) Where do you work?

	Volusia County	Orange County	Seminole County	Brevard County	Flagler County	Lake County	Osceola County	Duval County	Other
0-5 minutes	100.00%	0.00%	0.00%	0.00%	0.00%	0.00%	0.00%	0.00%	0.00%
5-10 minutes	95.45%	0.00%	4.55%	0.00%	0.00%	0.00%	0.00%	0.00%	0.00%
11-15 minutes	92.31%	0.00%	0.00%	0.00%	7.69%	0.00%	0.00%	0.00%	0.00%
16-20 minutes	92.31%	0.00%	7.69%	0.00%	0.00%	0.00%	0.00%	0.00%	0.00%
21-25 minutes	100.00%	0.00%	0.00%	0.00%	0.00%	0.00%	0.00%	0.00%	0.00%
26-30 minutes	80.00%	0.00%	20.00%	0.00%	0.00%	0.00%	0.00%	0.00%	0.00%
31-45 minutes	90.00%	0.00%	10.00%	0.00%	0.00%	0.00%	0.00%	0.00%	0.00%
46-60 minutes	100.00%	0.00%	0.00%	0.00%	0.00%	0.00%	0.00%	0.00%	0.00%
60-75 minutes	100.00%	0.00%	0.00%	0.00%	0.00%	0.00%	0.00%	0.00%	0.00%
Do not Work	33.33%	0.00%	0.00%	0.00%	0.00%	0.00%	0.00%	0.00%	66.67%



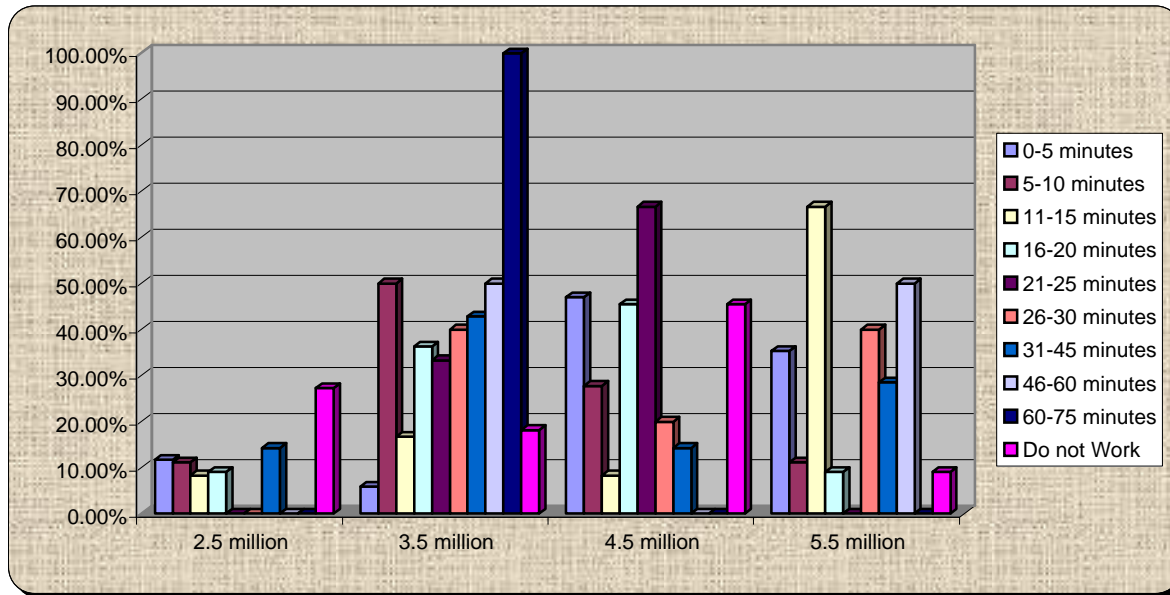
7.) How long does it take you to get to work?

	5-10 minutes	11-15 minutes	16-20 minutes	21-25 minutes	26-30 minutes	31-45 minutes	46-60 minutes	60-75 minutes	Above 75 minutes
0-5 minutes	100.00%	0.00%	0.00%	0.00%	0.00%	0.00%	0.00%	0.00%	0.00%
5-10 minutes	81.82%	13.64%	0.00%	4.55%	0.00%	0.00%	0.00%	0.00%	0.00%
11-15 minutes	6.67%	93.33%	0.00%	0.00%	0.00%	0.00%	0.00%	0.00%	0.00%
16-20 minutes	0.00%	0.00%	91.67%	8.33%	0.00%	0.00%	0.00%	0.00%	0.00%
21-25 minutes	0.00%	0.00%	0.00%	85.71%	14.29%	0.00%	0.00%	0.00%	0.00%
26-30 minutes	0.00%	0.00%	0.00%	0.00%	100.00%	0.00%	0.00%	0.00%	0.00%
31-45 minutes	0.00%	0.00%	0.00%	10.00%	0.00%	90.00%	0.00%	0.00%	0.00%
46-60 minutes	0.00%	0.00%	0.00%	0.00%	0.00%	25.00%	75.00%	0.00%	0.00%
60-75 minutes	0.00%	0.00%	0.00%	0.00%	0.00%	0.00%	0.00%	100.00%	0.00%
Do not Work	0%	0%	0%	0%	0%	0%	0%	0%	0%



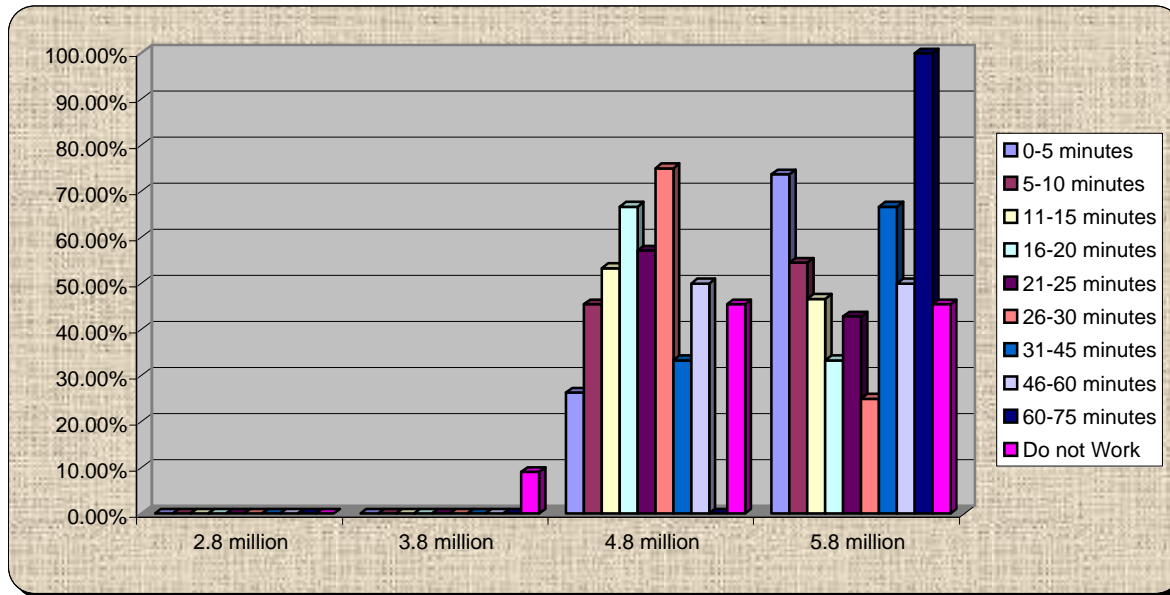
8.) What is the population of the 7 County Central Florida Region?

	2.5 million	3.5 million	4.5 million	5.5 million
0-5 minutes	11.76%	5.88%	47.06%	35.29%
5-10 minutes	11.11%	50.00%	27.78%	11.11%
11-15 minutes	8.33%	16.67%	8.33%	66.67%
16-20 minutes	9.09%	36.36%	45.45%	9.09%
21-25 minutes	0.00%	33.33%	66.67%	0.00%
26-30 minutes	0.00%	40.00%	20.00%	40.00%
31-45 minutes	14.29%	42.86%	14.29%	28.57%
46-60 minutes	0.00%	50.00%	0.00%	50.00%
60-75 minutes	0.00%	100.00%	0.00%	0.00%
Do not Work	27.27%	18.18%	45.45%	9.09%



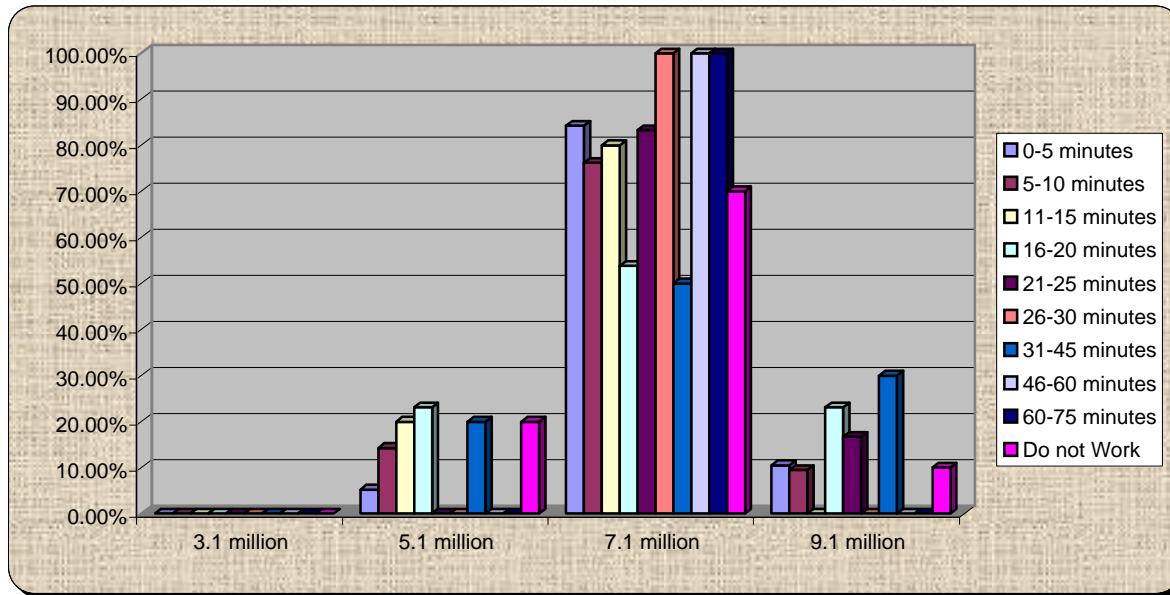
9.) What is the projected population of Central Florida in 2020?

	2.8 million	3.8 million	4.8 million	5.8 million
0-5 minutes	0.00%	0.00%	26.32%	73.68%
5-10 minutes	0.00%	0.00%	45.45%	54.55%
11-15 minutes	0.00%	0.00%	53.33%	46.67%
16-20 minutes	0.00%	0.00%	66.67%	33.33%
21-25 minutes	0.00%	0.00%	57.14%	42.86%
26-30 minutes	0.00%	0.00%	75.00%	25.00%
31-45 minutes	0.00%	0.00%	33.33%	66.67%
46-60 minutes	0.00%	0.00%	50.00%	50.00%
60-75 minutes	0.00%	0.00%	0.00%	100.00%
Do not Work	0.00%	9.09%	45.45%	45.45%



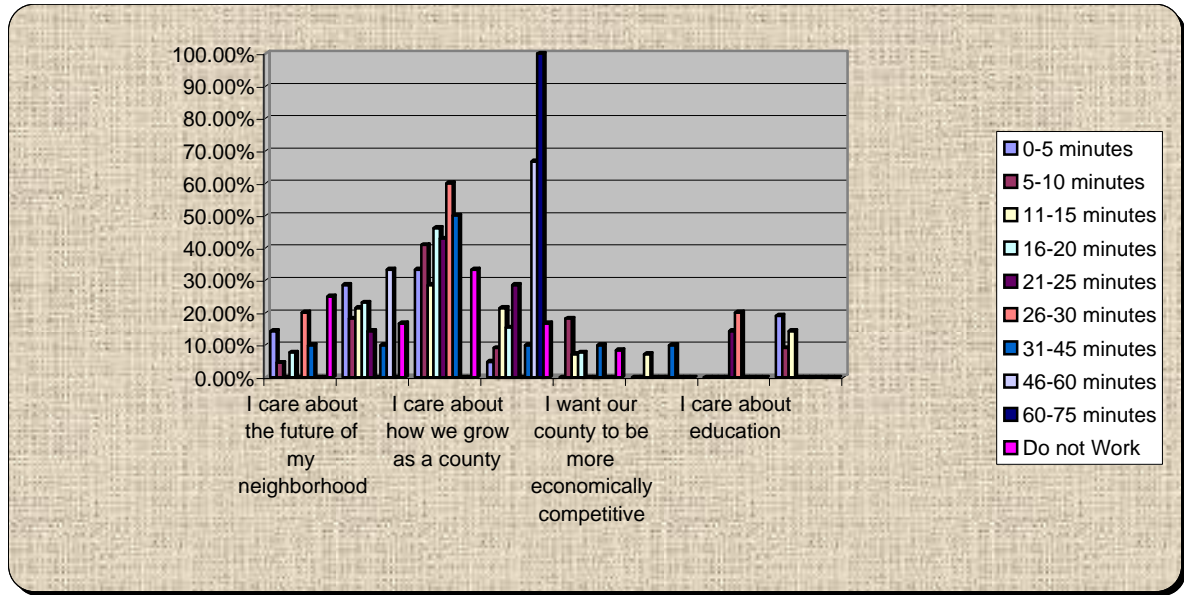
10.) What is the projected population of Central Florida in 2050?

	3.1 million	5.1 million	7.1 million	9.1 million
0-5 minutes	0.00%	5.26%	84.21%	10.53%
5-10 minutes	0.00%	14.29%	76.19%	9.52%
11-15 minutes	0.00%	20.00%	80.00%	0.00%
16-20 minutes	0.00%	23.08%	53.85%	23.08%
21-25 minutes	0.00%	0.00%	83.33%	16.67%
26-30 minutes	0.00%	0.00%	100.00%	0.00%
31-45 minutes	0.00%	20.00%	50.00%	30.00%
46-60 minutes	0.00%	0.00%	100.00%	0.00%
60-75 minutes	0.00%	0.00%	100.00%	0.00%
Do not Work	0.00%	20.00%	70.00%	10.00%



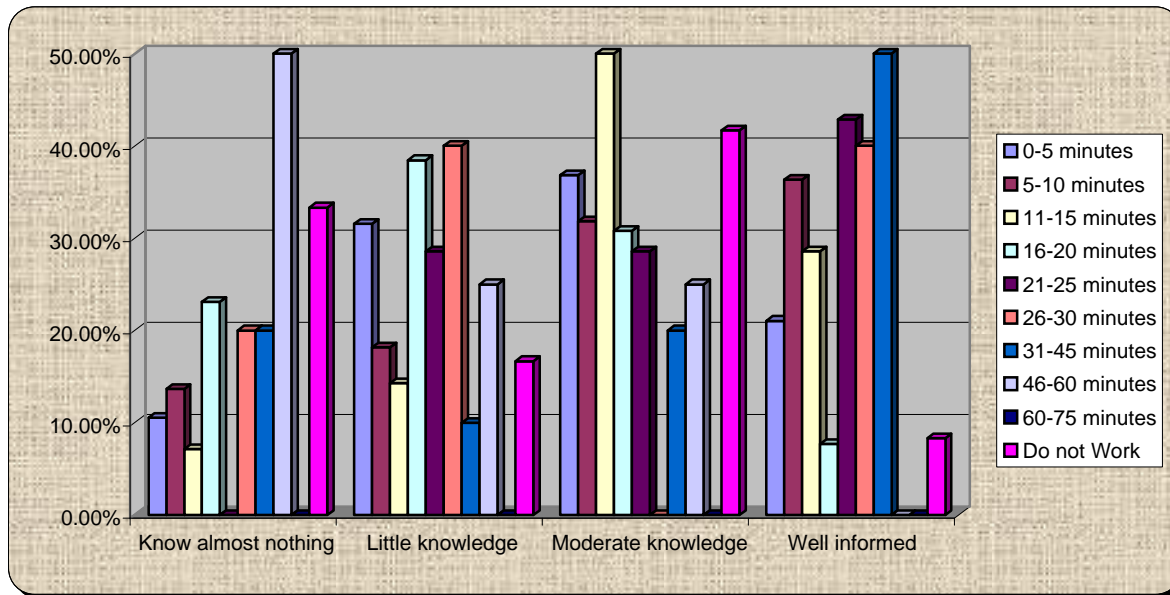
11.) Why are you here – Best Answer?

	I care about the future of my neighborhood	I care about protecting the environment	I care about how we grow as a county	I care about how we grow in relation to the region	I want our county to be more economically competitive	I want to network with leaders and members of my community	I care about education	Other
0-5 minutes	14.29%	28.57%	33.33%	4.76%	0.00%	0.00%	0.00%	19.05%
5-10 minutes	4.55%	18.18%	40.91%	9.09%	18.18%	0.00%	0.00%	9.09%
11-15 minutes	0.00%	21.43%	28.57%	21.43%	7.14%	7.14%	0.00%	14.29%
16-20 minutes	7.69%	23.08%	46.15%	15.38%	7.69%	0.00%	0.00%	0.00%
21-25 minutes	0.00%	14.29%	42.86%	28.57%	0.00%	0.00%	14.29%	0.00%
26-30 minutes	20.00%	0.00%	60.00%	0.00%	0.00%	0.00%	20.00%	0.00%
31-45 minutes	10.00%	10.00%	50.00%	10.00%	10.00%	10.00%	0.00%	0.00%
46-60 minutes	0.00%	33.33%	0.00%	66.67%	0.00%	0.00%	0.00%	0.00%
60-75 minutes	0.00%	0.00%	0.00%	100.00%	0.00%	0.00%	0.00%	0.00%
Do not Work	25.00%	16.67%	33.33%	16.67%	8.33%	0.00%	0.00%	0.00%



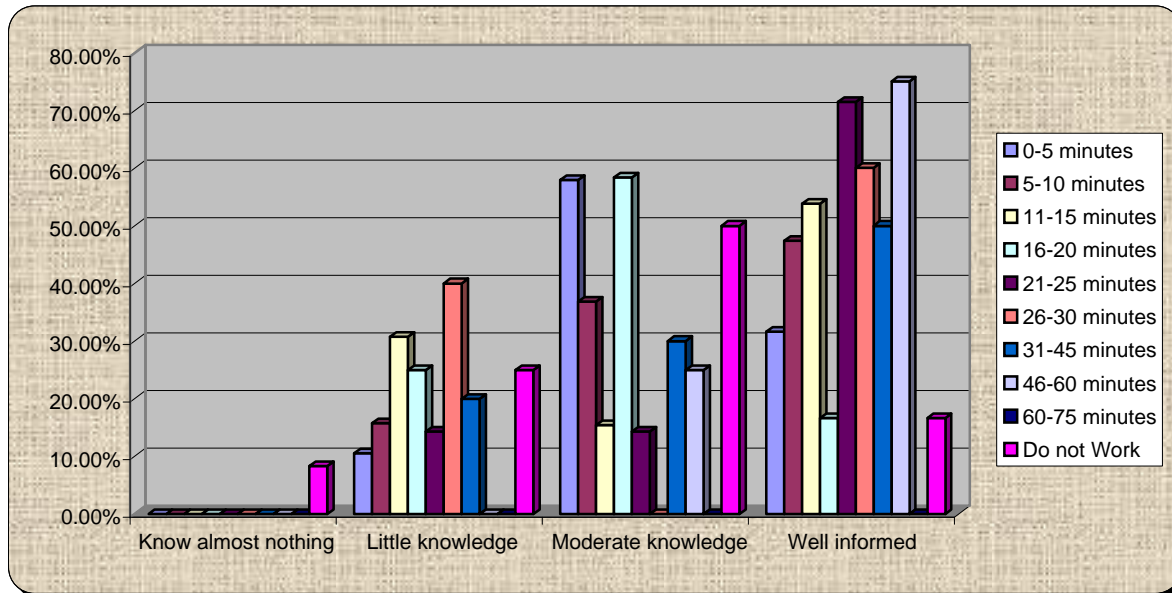
12.) How informed am I about myregion.org? Scale of 1 to 5, 5 well informed and 1 know almost nothing

	Know almost nothing	Little knowledge	Moderate knowledge	Well informed
0-5 minutes	10.53%	31.58%	36.84%	21.05%
5-10 minutes	13.64%	18.18%	31.82%	36.36%
11-15 minutes	7.14%	14.29%	50.00%	28.57%
16-20 minutes	23.08%	38.46%	30.77%	7.69%
21-25 minutes	0.00%	28.57%	28.57%	42.86%
26-30 minutes	20.00%	40.00%	0.00%	40.00%
31-45 minutes	20.00%	10.00%	20.00%	50.00%
46-60 minutes	50.00%	25.00%	25.00%	0.00%
60-75 minutes	0%	0%	0%	0%
Do not Work	33.33%	16.67%	41.67%	8.33%



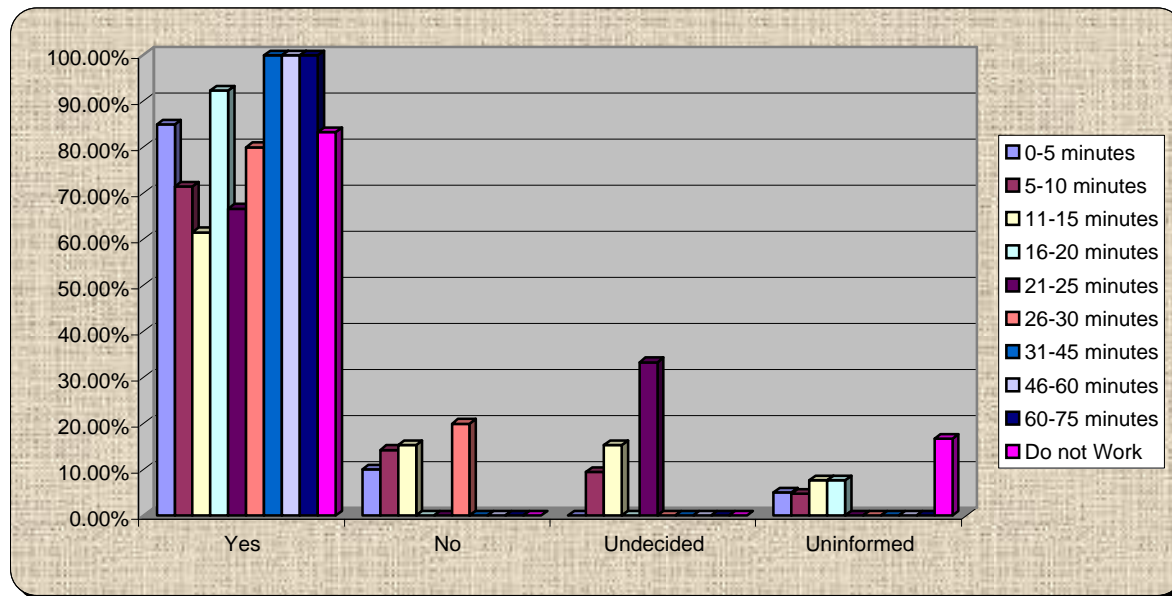
13.) How informed am I about growth planning and priorities in Volusia?

	Know almost nothing	Little knowledge	Moderate knowledge	Well informed
0-5 minutes	0.00%	10.53%	57.89%	31.58%
5-10 minutes	0.00%	15.79%	36.84%	47.37%
11-15 minutes	0.00%	30.77%	15.38%	53.85%
16-20 minutes	0.00%	25.00%	58.33%	16.67%
21-25 minutes	0.00%	14.29%	14.29%	71.43%
26-30 minutes	0.00%	40.00%	0.00%	60.00%
31-45 minutes	0.00%	20.00%	30.00%	50.00%
46-60 minutes	0.00%	0.00%	25.00%	75.00%
60-75 minutes	0%	0%	0%	0%
Do not Work	8.33%	25.00%	50.00%	16.67%



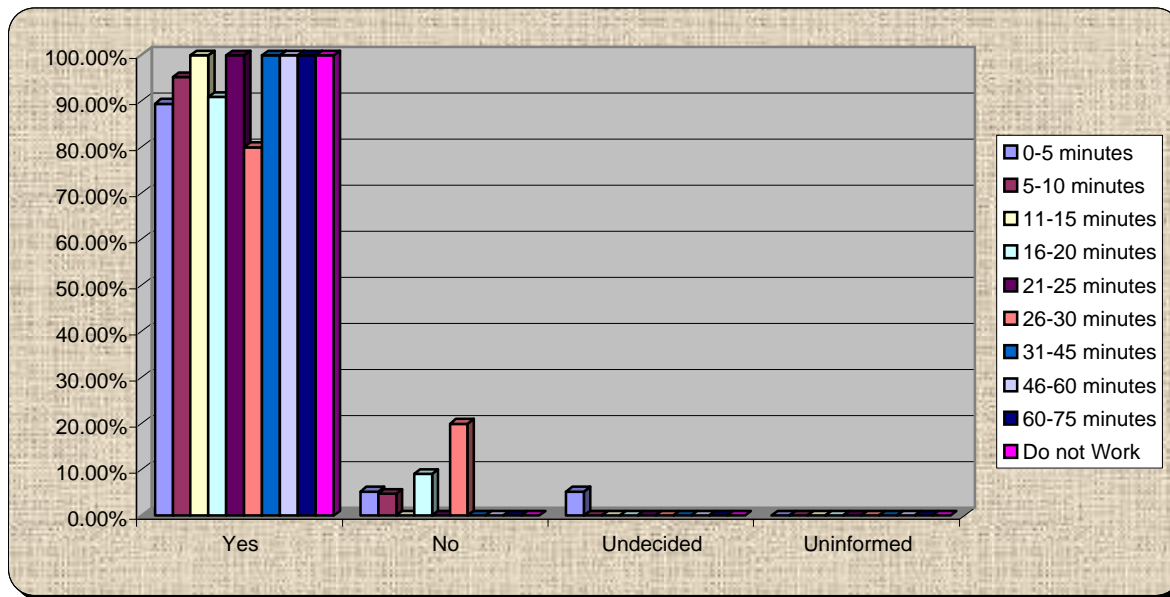
14.) Do you support minimum environmental standards countywide?

	Yes	No	Undecided	Uninformed
0-5 minutes	85.00%	10.00%	0.00%	5.00%
5-10 minutes	71.43%	14.29%	9.52%	4.76%
11-15 minutes	61.54%	15.38%	15.38%	7.69%
16-20 minutes	92.31%	0.00%	0.00%	7.69%
21-25 minutes	66.67%	0.00%	33.33%	0.00%
26-30 minutes	80.00%	20.00%	0.00%	0.00%
31-45 minutes	100.00%	0.00%	0.00%	0.00%
46-60 minutes	100.00%	0.00%	0.00%	0.00%
60-75 minutes	100.00%	0.00%	0.00%	0.00%
Do not Work	83.33%	0.00%	0.00%	16.67%



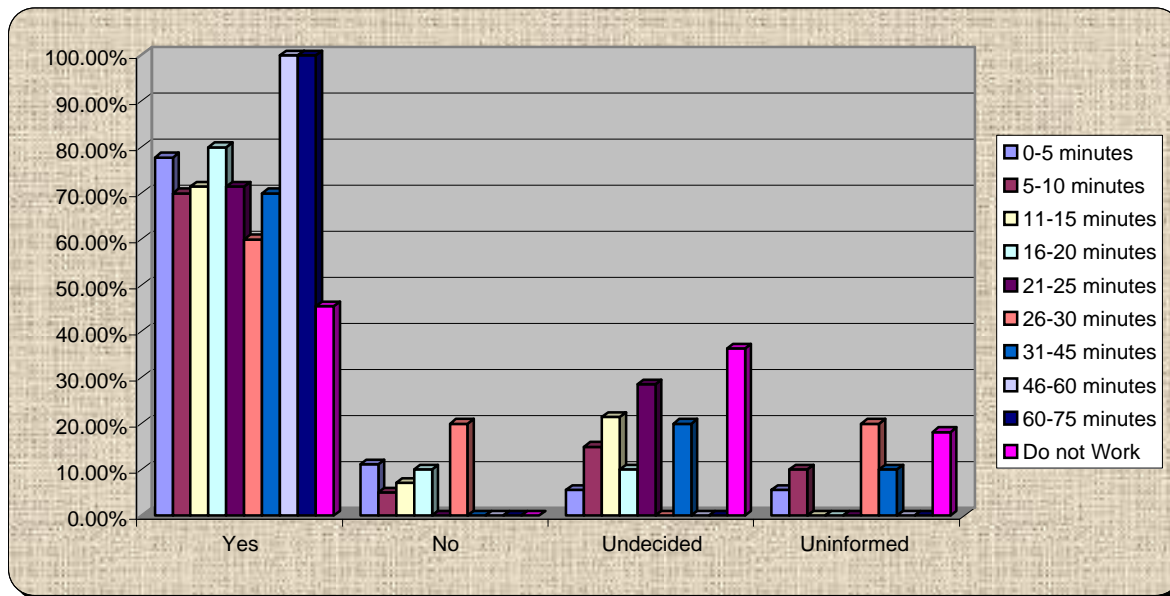
15.) Do you believe protecting natural areas will benefit your quality of life?

	Yes	No	Undecided	Uninformed
0-5 minutes	89.47%	5.26%	5.26%	0.00%
5-10 minutes	95.24%	4.76%	0.00%	0.00%
11-15 minutes	100.00%	0.00%	0.00%	0.00%
16-20 minutes	90.91%	9.09%	0.00%	0.00%
21-25 minutes	100.00%	0.00%	0.00%	0.00%
26-30 minutes	80.00%	20.00%	0.00%	0.00%
31-45 minutes	100.00%	0.00%	0.00%	0.00%
46-60 minutes	100.00%	0.00%	0.00%	0.00%
60-75 minutes	100.00%	0.00%	0.00%	0.00%
Do not Work	100.00%	0.00%	0.00%	0.00%



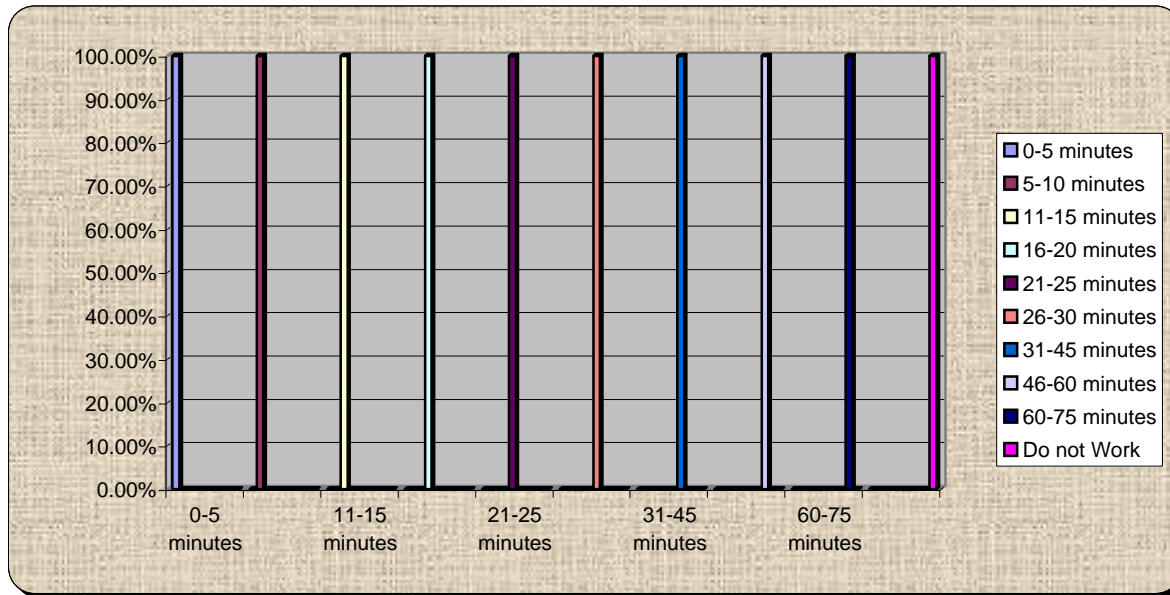
16.) Do you support smart growth tools such as transfer of development rights to protect rural and natural areas?

	Yes	No	Undecided	Uninformed
0-5 minutes	77.78%	11.11%	5.56%	5.56%
5-10 minutes	70.00%	5.00%	15.00%	10.00%
11-15 minutes	71.43%	7.14%	21.43%	0.00%
16-20 minutes	80.00%	10.00%	10.00%	0.00%
21-25 minutes	71.43%	0.00%	28.57%	0.00%
26-30 minutes	60.00%	20.00%	0.00%	20.00%
31-45 minutes	70.00%	0.00%	20.00%	10.00%
46-60 minutes	100.00%	0.00%	0.00%	0.00%
60-75 minutes	100.00%	0.00%	0.00%	0.00%
Do not Work	45.45%	0.00%	36.36%	18.18%



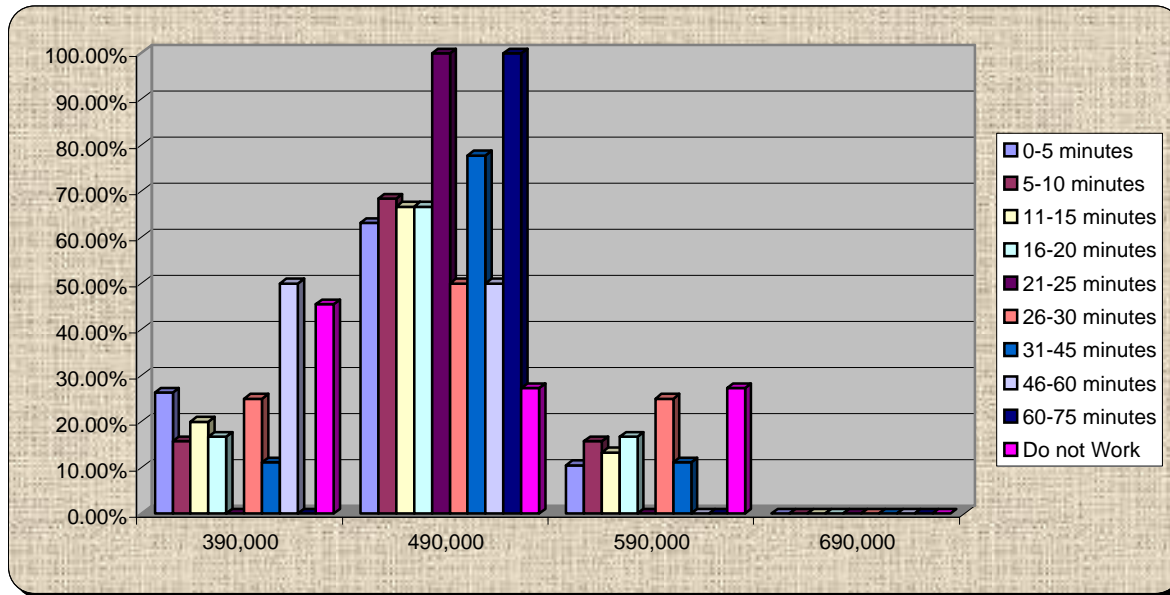
17.) Re-poll: How long does it take you to get to work?

	0-5 minutes	5-10 minutes	11-15 minutes	16-20 minutes	21-25 minutes	26-30 minutes	31-45 minutes	46-60 minutes	60-75 minutes	Do not Work
0-5 minutes	100.00%	0.00%	0.00%	0.00%	0.00%	0.00%	0.00%	0.00%	0.00%	0.00%
5-10 minutes	0.00%	100.00%	0.00%	0.00%	0.00%	0.00%	0.00%	0.00%	0.00%	0.00%
11-15 minutes	0.00%	0.00%	100.00%	0.00%	0.00%	0.00%	0.00%	0.00%	0.00%	0.00%
16-20 minutes	0.00%	0.00%	0.00%	100.00%	0.00%	0.00%	0.00%	0.00%	0.00%	0.00%
21-25 minutes	0.00%	0.00%	0.00%	0.00%	100.00%	0.00%	0.00%	0.00%	0.00%	0.00%
26-30 minutes	0.00%	0.00%	0.00%	0.00%	0.00%	100.00%	0.00%	0.00%	0.00%	0.00%
31-45 minutes	0.00%	0.00%	0.00%	0.00%	0.00%	0.00%	100.00%	0.00%	0.00%	0.00%
46-60 minutes	0.00%	0.00%	0.00%	0.00%	0.00%	0.00%	0.00%	100.00%	0.00%	0.00%
60-75 minutes	0.00%	0.00%	0.00%	0.00%	0.00%	0.00%	0.00%	0.00%	100.00%	0.00%
Do not Work	0.00%	0.00%	0.00%	0.00%	0.00%	0.00%	0.00%	0.00%	0.00%	100.00%



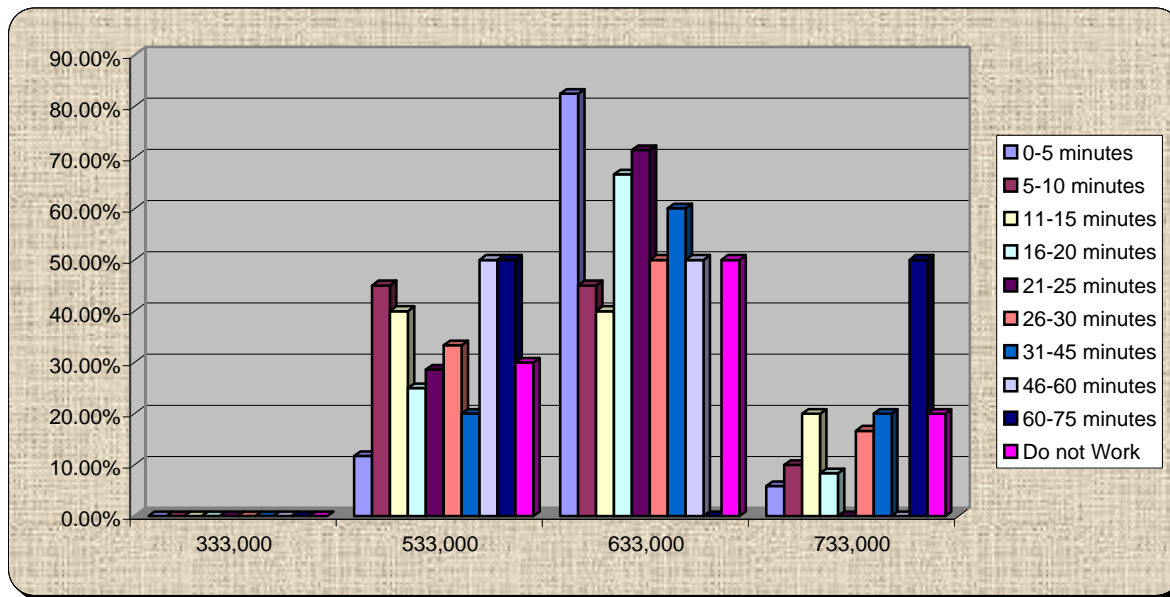
18.) What is the population of Volusia County?

	390,000	490,000	590,000	690,000
0-5 minutes	26.32%	63.16%	10.53%	0.00%
5-10 minutes	15.79%	68.42%	15.79%	0.00%
11-15 minutes	20.00%	66.67%	13.33%	0.00%
16-20 minutes	16.67%	66.67%	16.67%	0.00%
21-25 minutes	0.00%	100.00%	0.00%	0.00%
26-30 minutes	25.00%	50.00%	25.00%	0.00%
31-45 minutes	11.11%	77.78%	11.11%	0.00%
46-60 minutes	50.00%	50.00%	0.00%	0.00%
60-75 minutes	0.00%	100.00%	0.00%	0.00%
Do not Work	45.45%	27.27%	27.27%	0.00%



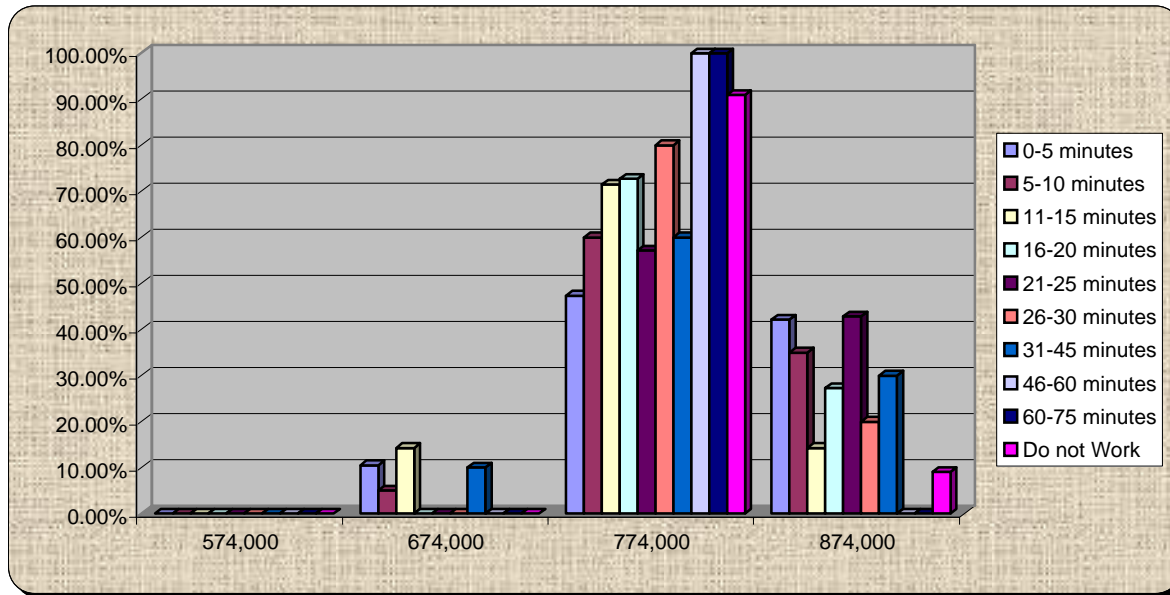
19.) What is the projected population of Volusia County in 2020?

	333,000	533,000	633,000	733,000
0-5 minutes	0.00%	11.76%	82.35%	5.88%
5-10 minutes	0.00%	45.00%	45.00%	10.00%
11-15 minutes	0.00%	40.00%	40.00%	20.00%
16-20 minutes	0.00%	25.00%	66.67%	8.33%
21-25 minutes	0.00%	28.57%	71.43%	0.00%
26-30 minutes	0.00%	33.33%	50.00%	16.67%
31-45 minutes	0.00%	20.00%	60.00%	20.00%
46-60 minutes	0.00%	50.00%	50.00%	0.00%
60-75 minutes	0.00%	50.00%	0.00%	50.00%
Do not Work	0.00%	30.00%	50.00%	20.00%



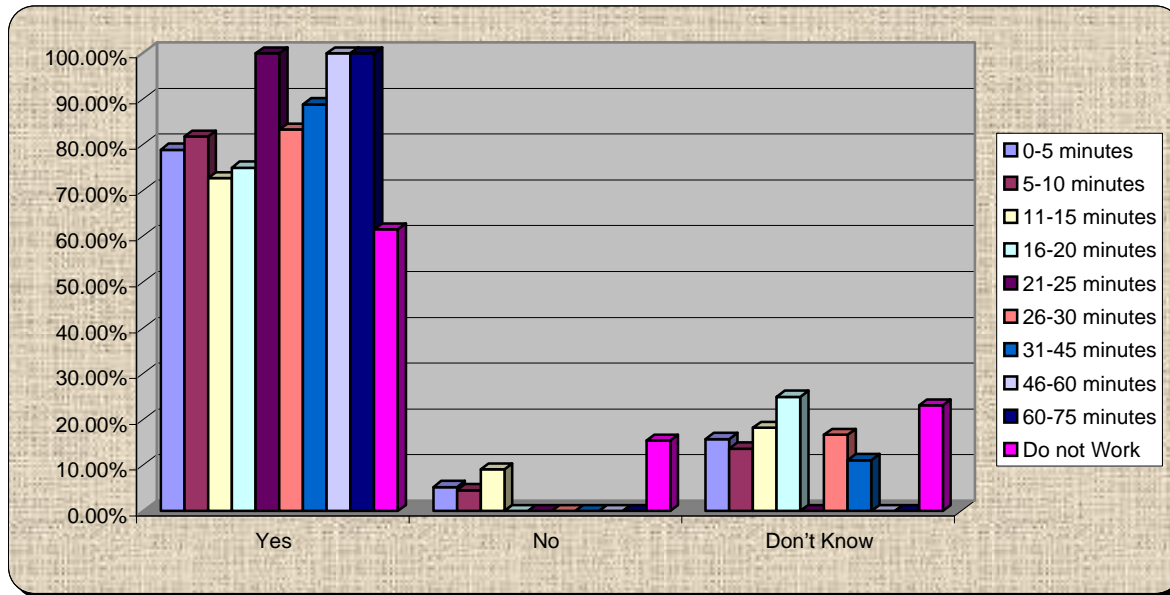
20.) What is the projected population of Volusia County in 2050?

	574,000	674,000	774,000	874,000
0-5 minutes	0.00%	10.53%	47.37%	42.11%
5-10 minutes	0.00%	5.00%	60.00%	35.00%
11-15 minutes	0.00%	14.29%	71.43%	14.29%
16-20 minutes	0.00%	0.00%	72.73%	27.27%
21-25 minutes	0.00%	0.00%	57.14%	42.86%
26-30 minutes	0.00%	0.00%	80.00%	20.00%
31-45 minutes	0.00%	10.00%	60.00%	30.00%
46-60 minutes	0.00%	0.00%	100.00%	0.00%
60-75 minutes	0.00%	0.00%	100.00%	0.00%
Do not Work	0.00%	0.00%	90.91%	9.09%



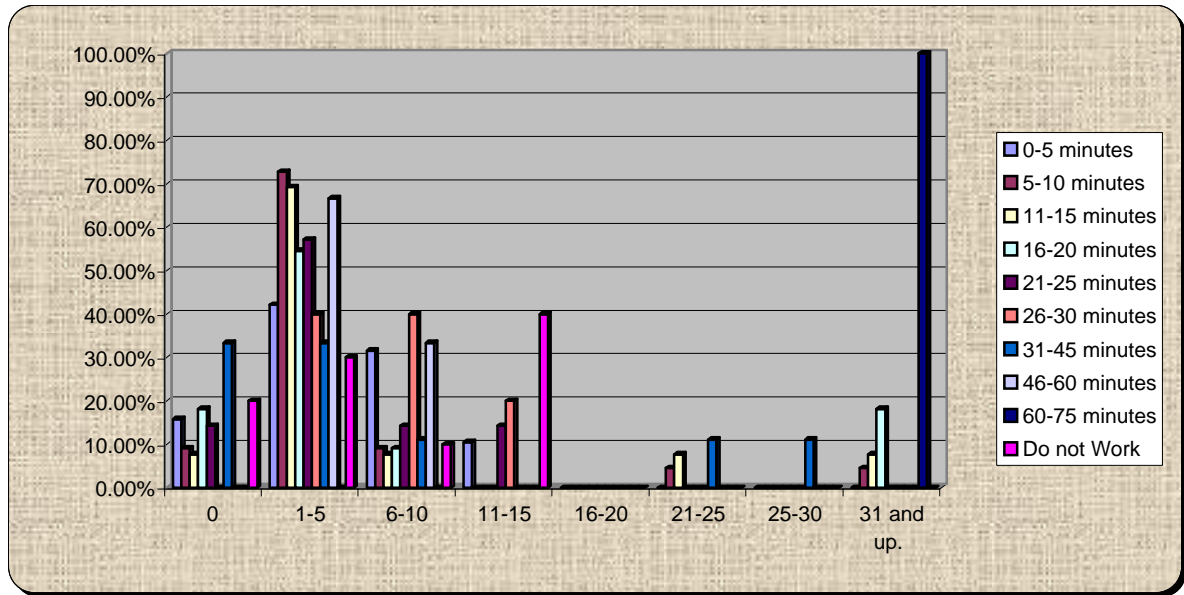
21.) Do you believe sustainable communities will support a strong local economy?

	Yes	No	Don't Know
0-5 minutes	78.95%	5.26%	15.79%
5-10 minutes	81.82%	4.55%	13.64%
11-15 minutes	72.73%	9.09%	18.18%
16-20 minutes	75.00%	0.00%	25.00%
21-25 minutes	100.00%	0.00%	0.00%
26-30 minutes	83.33%	0.00%	16.67%
31-45 minutes	88.89%	0.00%	11.11%
46-60 minutes	100.00%	0.00%	0.00%
60-75 minutes	100.00%	0.00%	0.00%
Do not Work	61.54%	15.38%	23.08%



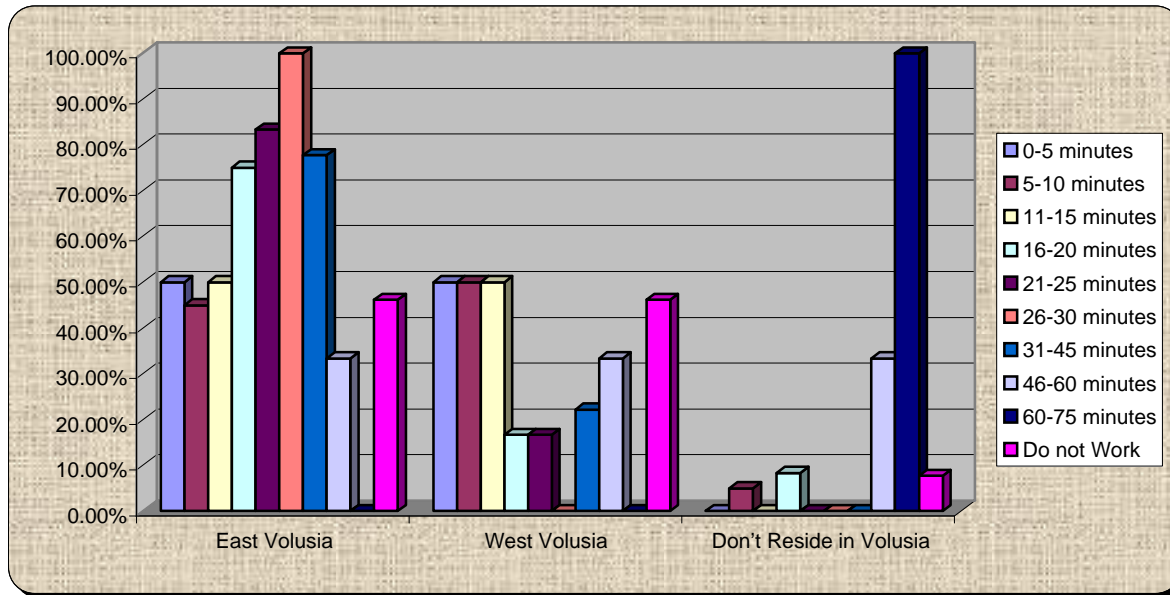
22.) How many days per month do you leave the borders of Volusia for commercial, educational, entertainment, healthcare or other activities?

	0	1-5	6-10	11-15	16-20	21-25	25-30	31 and up.
0-5 minutes	15.79%	42.11%	31.58%	10.53%	0.00%	0.00%	0.00%	0.00%
5-10 minutes	9.09%	72.73%	9.09%	0.00%	0.00%	4.55%	0.00%	4.55%
11-15 minutes	7.69%	69.23%	7.69%	0.00%	0.00%	7.69%	0.00%	7.69%
16-20 minutes	18.18%	54.55%	9.09%	0.00%	0.00%	0.00%	0.00%	18.18%
21-25 minutes	14.29%	57.14%	14.29%	14.29%	0.00%	0.00%	0.00%	0.00%
26-30 minutes	0.00%	40.00%	40.00%	20.00%	0.00%	0.00%	0.00%	0.00%
31-45 minutes	33.33%	33.33%	11.11%	0.00%	0.00%	11.11%	11.11%	0.00%
46-60 minutes	0.00%	66.67%	33.33%	0.00%	0.00%	0.00%	0.00%	0.00%
60-75 minutes	0.00%	0.00%	0.00%	0.00%	0.00%	0.00%	0.00%	100.00%
Do not Work	20.00%	30.00%	10.00%	40.00%	0.00%	0.00%	0.00%	0.00%



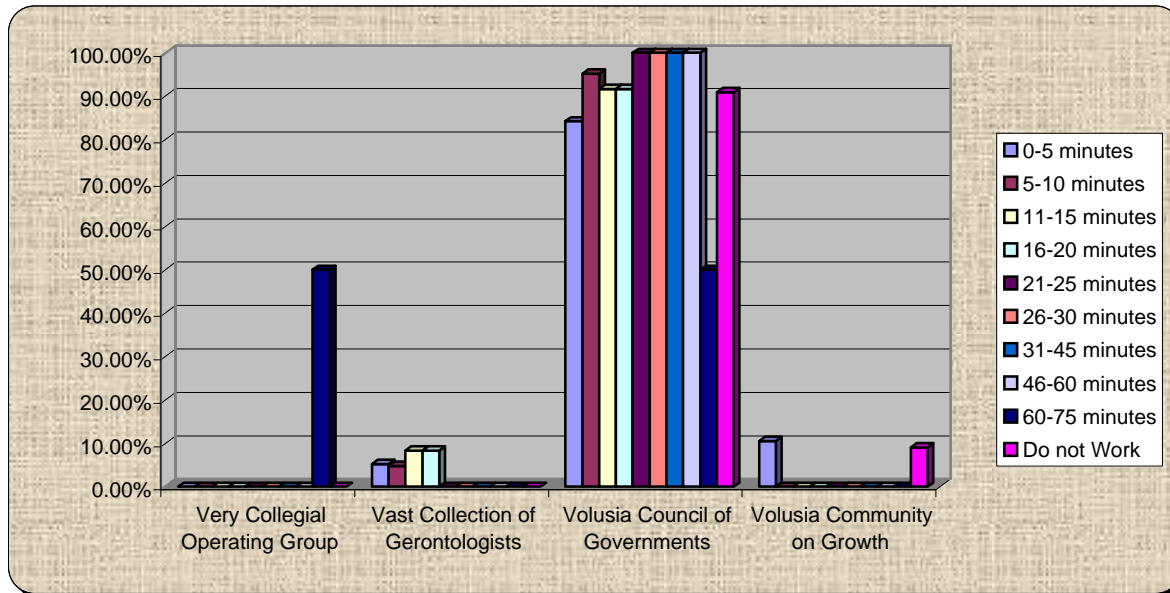
23.) Where do you reside?

	East Volusia	West Volusia	Volusia
0-5 minutes	50.00%	50.00%	0.00%
5-10 minutes	45.00%	50.00%	5.00%
11-15 minutes	50.00%	50.00%	0.00%
16-20 minutes	75.00%	16.67%	8.33%
21-25 minutes	83.33%	16.67%	0.00%
26-30 minutes	100.00%	0.00%	0.00%
31-45 minutes	77.78%	22.22%	0.00%
46-60 minutes	33.33%	33.33%	33.33%
60-75 minutes	0.00%	0.00%	100.00%
Do not Work	46.15%	46.15%	7.69%



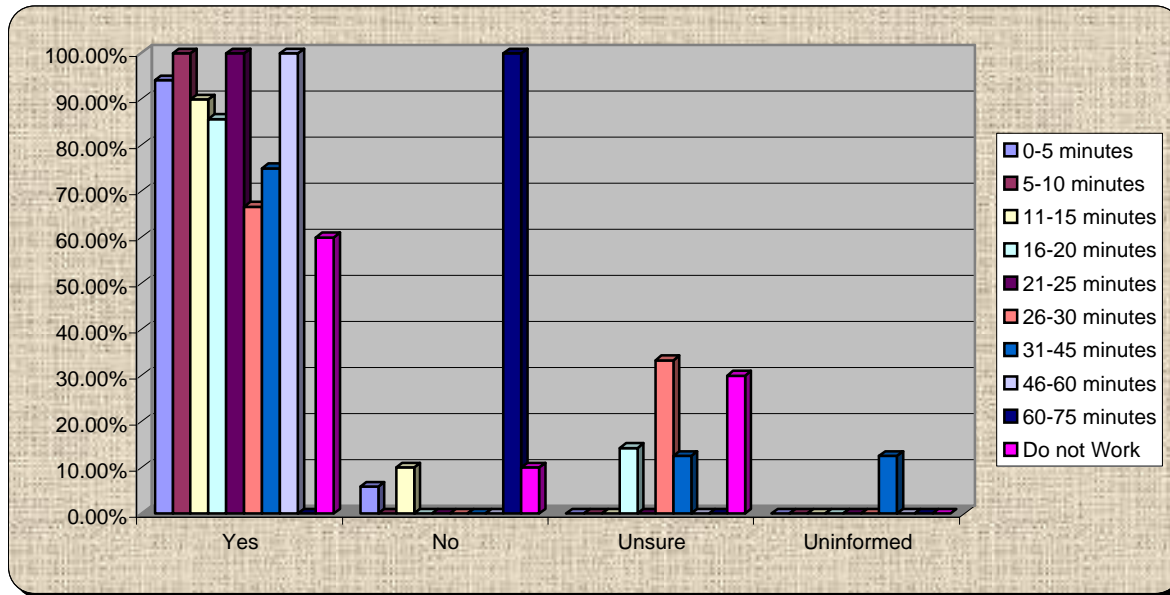
24.) What is VCOG:

	Very Collegial Operating Group	Vast Collection of Gerontologists	Volusia Council of Governments	Volusia Community on Growth
0-5 minutes	0.00%	5.26%	84.21%	10.53%
5-10 minutes	0.00%	4.76%	95.24%	0.00%
11-15 minutes	0.00%	8.33%	91.67%	0.00%
16-20 minutes	0.00%	8.33%	91.67%	0.00%
21-25 minutes	0.00%	0.00%	100.00%	0.00%
26-30 minutes	0.00%	0.00%	100.00%	0.00%
31-45 minutes	0.00%	0.00%	100.00%	0.00%
46-60 minutes	0.00%	0.00%	100.00%	0.00%
60-75 minutes	50.00%	0.00%	50.00%	0.00%
Do not Work	0.00%	0.00%	90.91%	9.09%



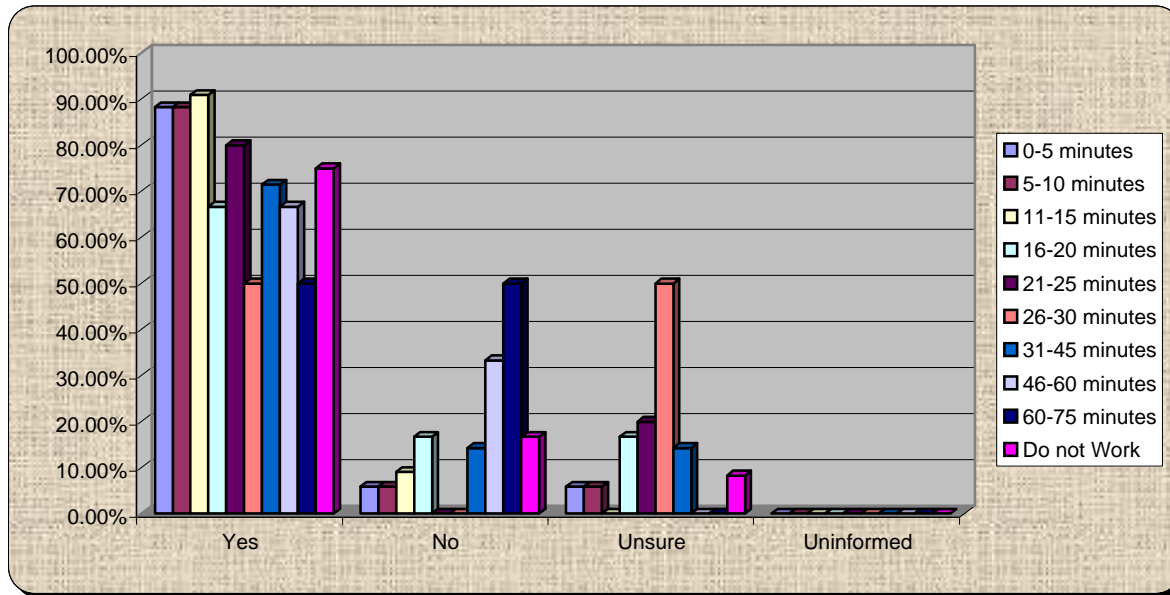
25.) Accelerating deployment of the right transportation technology will make a difference in achieving a sustainable future

	Yes	No	Unsure	Uninformed
0-5 minutes	94.12%	5.88%	0.00%	0.00%
5-10 minutes	100.00%	0.00%	0.00%	0.00%
11-15 minutes	90.00%	10.00%	0.00%	0.00%
16-20 minutes	85.71%	0.00%	14.29%	0.00%
21-25 minutes	100.00%	0.00%	0.00%	0.00%
26-30 minutes	66.67%	0.00%	33.33%	0.00%
31-45 minutes	75.00%	0.00%	12.50%	12.50%
46-60 minutes	100.00%	0.00%	0.00%	0.00%
60-75 minutes	0.00%	100.00%	0.00%	0.00%
Do not Work	60.00%	10.00%	30.00%	0.00%



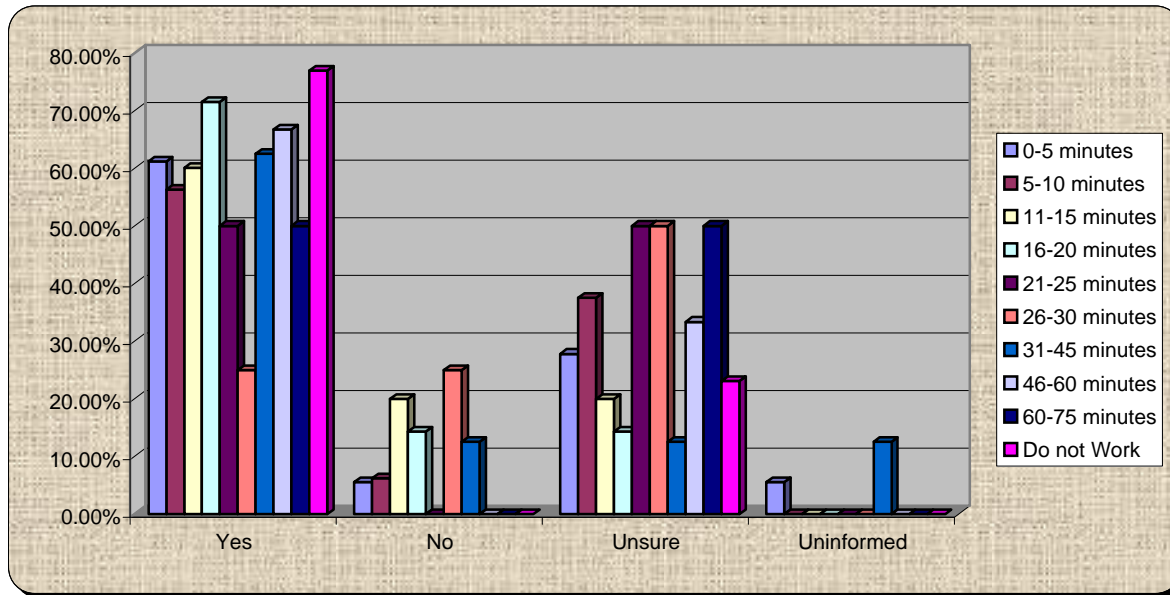
26.) Commuter rail is a vital component of our sustainable community

	Yes	No	Unsure	Uninformed
0-5 minutes	88.24%	5.88%	5.88%	0.00%
5-10 minutes	88.24%	5.88%	5.88%	0.00%
11-15 minutes	90.91%	9.09%	0.00%	0.00%
16-20 minutes	66.67%	16.67%	16.67%	0.00%
21-25 minutes	80.00%	0.00%	20.00%	0.00%
26-30 minutes	50.00%	0.00%	50.00%	0.00%
31-45 minutes	71.43%	14.29%	14.29%	0.00%
46-60 minutes	66.67%	33.33%	0.00%	0.00%
60-75 minutes	50.00%	50.00%	0.00%	0.00%
Do not Work	75.00%	16.67%	8.33%	0.00%



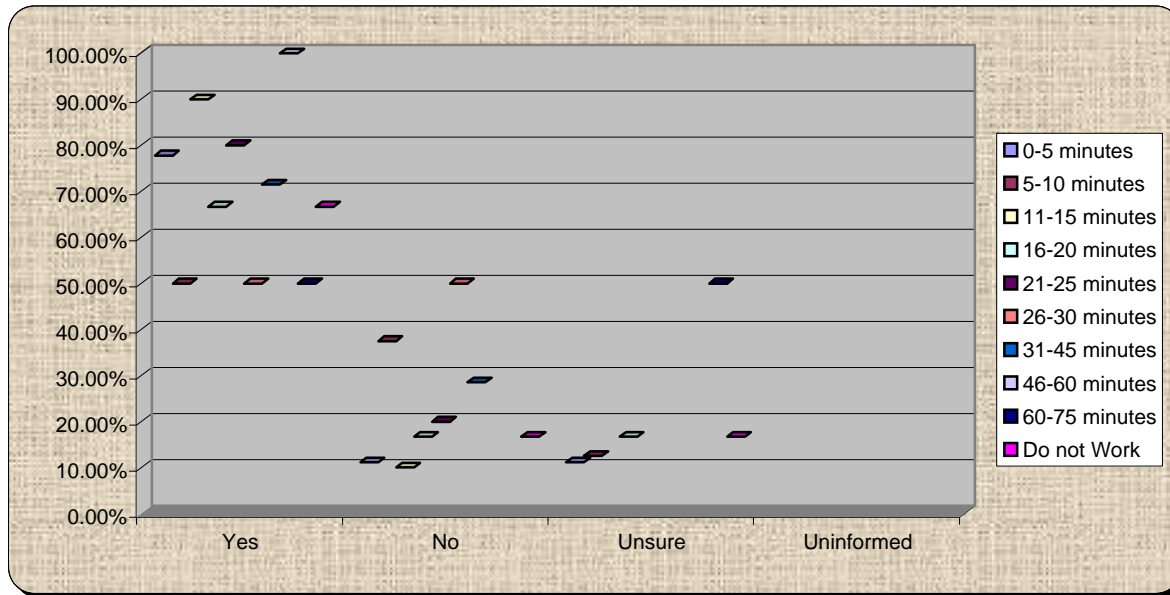
27.) I understand how A & B operate and what scenarios they represent

	Yes	No	Unsure	Uninformed
0-5 minutes	61.11%	5.56%	27.78%	5.56%
5-10 minutes	56.25%	6.25%	37.50%	0.00%
11-15 minutes	60.00%	20.00%	20.00%	0.00%
16-20 minutes	71.43%	14.29%	14.29%	0.00%
21-25 minutes	50.00%	0.00%	50.00%	0.00%
26-30 minutes	25.00%	25.00%	50.00%	0.00%
31-45 minutes	62.50%	12.50%	12.50%	12.50%
46-60 minutes	66.67%	0.00%	33.33%	0.00%
60-75 minutes	50.00%	0.00%	50.00%	0.00%
Do not Work	76.92%	0.00%	23.08%	0.00%



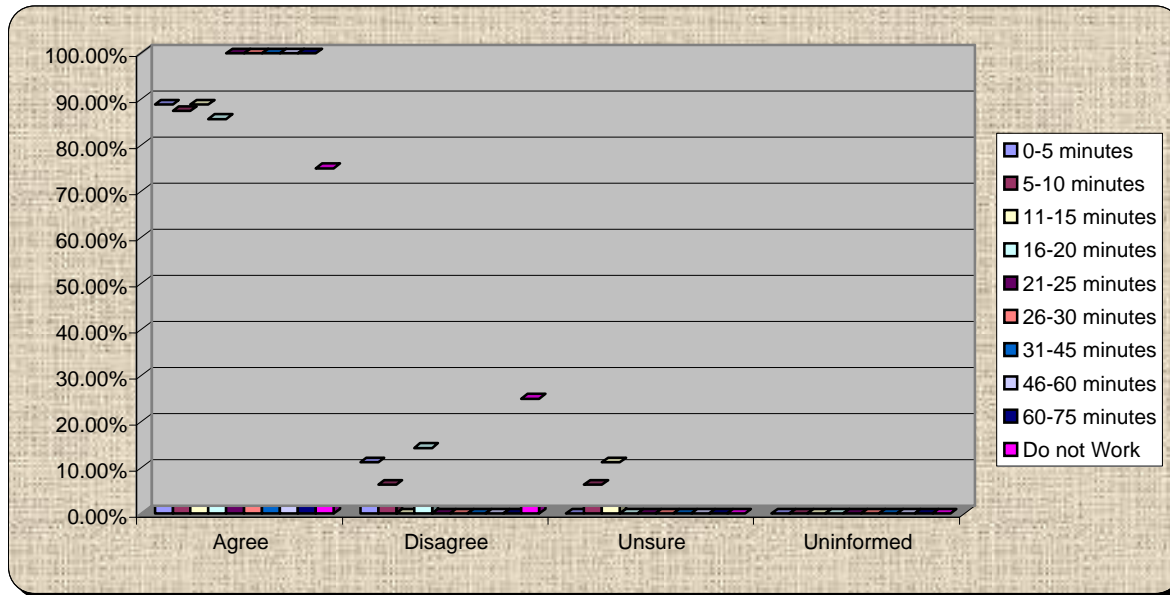
28.) Communicating the complexity of systems and infrastructure is our most serious barrier to success

	Yes	No	Unsure	Uninformed
0-5 minutes	77.78%	11.11%	11.11%	0.00%
5-10 minutes	50.00%	37.50%	12.50%	0.00%
11-15 minutes	90.00%	10.00%	0.00%	0.00%
16-20 minutes	66.67%	16.67%	16.67%	0.00%
21-25 minutes	80.00%	20.00%	0.00%	0.00%
26-30 minutes	50.00%	50.00%	0.00%	0.00%
31-45 minutes	71.43%	28.57%	0.00%	0.00%
46-60 minutes	100.00%	0.00%	0.00%	0.00%
60-75 minutes	50.00%	0.00%	50.00%	0.00%
Do not Work	66.67%	16.67%	16.67%	0.00%



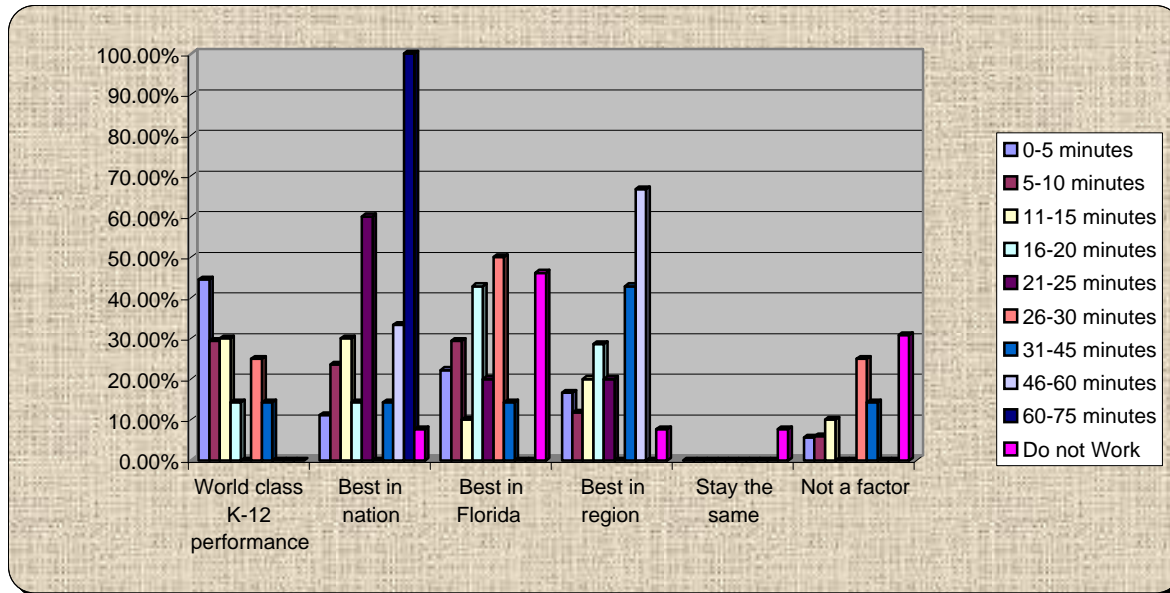
29.) We can't achieve our vision without culture change

	Agree	Disagree	Unsure	Uninformed
0-5 minutes	88.89%	11.11%	0.00%	0.00%
5-10 minutes	87.50%	6.25%	6.25%	0.00%
11-15 minutes	88.89%	0.00%	11.11%	0.00%
16-20 minutes	85.71%	14.29%	0.00%	0.00%
21-25 minutes	100.00%	0.00%	0.00%	0.00%
26-30 minutes	100.00%	0.00%	0.00%	0.00%
31-45 minutes	100.00%	0.00%	0.00%	0.00%
46-60 minutes	100.00%	0.00%	0.00%	0.00%
60-75 minutes	100.00%	0.00%	0.00%	0.00%
Do not Work	75.00%	25.00%	0.00%	0.00%



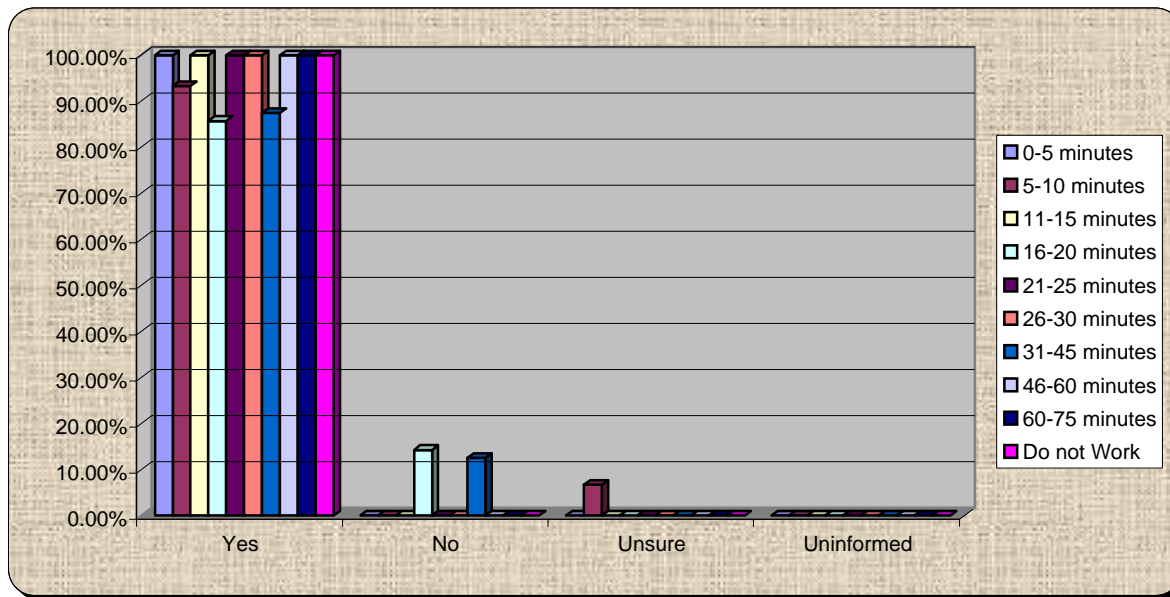
30.) Achieving our vision requires:

	World class K-12 performance	Best in nation	Best in Florida	Best in region	Stay the same	Not a factor
0-5 minutes	44.44%	11.11%	22.22%	16.67%	0.00%	5.56%
5-10 minutes	29.41%	23.53%	29.41%	11.76%	0.00%	5.88%
11-15 minutes	30.00%	30.00%	10.00%	20.00%	0.00%	10.00%
16-20 minutes	14.29%	14.29%	42.86%	28.57%	0.00%	0.00%
21-25 minutes	0.00%	60.00%	20.00%	20.00%	0.00%	0.00%
26-30 minutes	25.00%	0.00%	50.00%	0.00%	0.00%	25.00%
31-45 minutes	14.29%	14.29%	14.29%	42.86%	0.00%	14.29%
46-60 minutes	0.00%	33.33%	0.00%	66.67%	0.00%	0.00%
60-75 minutes	0.00%	100.00%	0.00%	0.00%	0.00%	0.00%
Do not Work	0.00%	7.69%	46.15%	7.69%	7.69%	30.77%



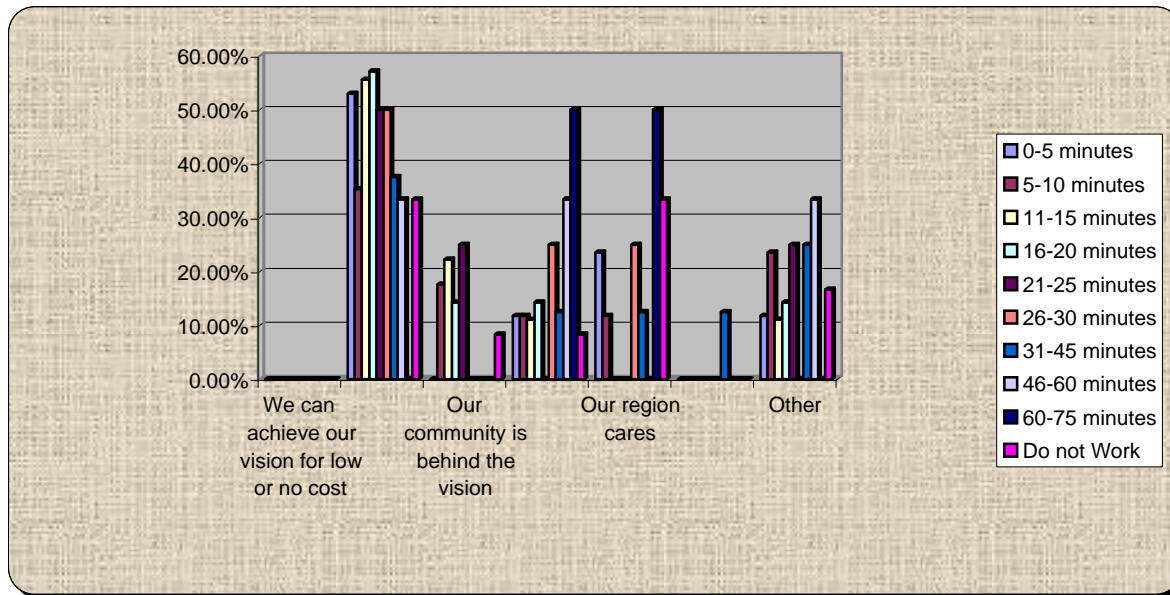
31.) I want to keep up with this effort

	Yes	No	Unsure	Uninformed
0-5 minutes	100.00%	0.00%	0.00%	0.00%
5-10 minutes	93.33%	0.00%	6.67%	0.00%
11-15 minutes	100.00%	0.00%	0.00%	0.00%
16-20 minutes	85.71%	14.29%	0.00%	0.00%
21-25 minutes	100.00%	0.00%	0.00%	0.00%
26-30 minutes	100.00%	0.00%	0.00%	0.00%
31-45 minutes	87.50%	12.50%	0.00%	0.00%
46-60 minutes	100.00%	0.00%	0.00%	0.00%
60-75 minutes	100.00%	0.00%	0.00%	0.00%
Do not Work	100.00%	0.00%	0.00%	0.00%



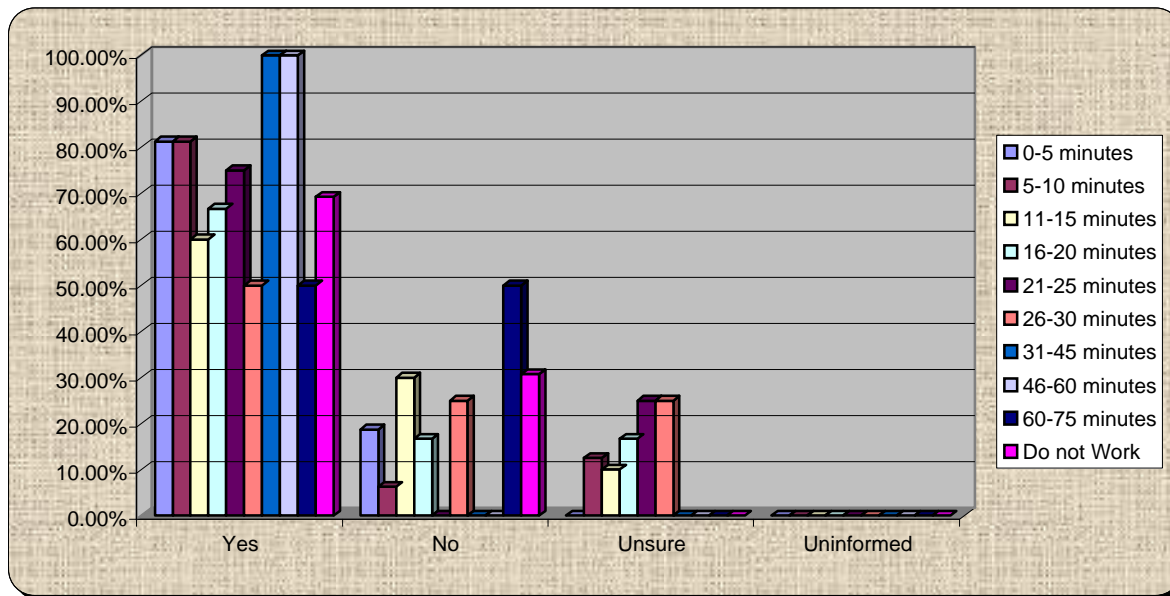
32.) What is the most important and credible message for your neighbor?

	We can achieve our vision for low or no cost	Our community governments can and are working together	Our community is behind the vision	Other communities have or are doing this with success	Our region cares	State policy and regulations are supportive	Other
0-5 minutes	0.00%	52.94%	0.00%	11.76%	23.53%	0.00%	11.76%
5-10 minutes	0.00%	35.29%	17.65%	11.76%	11.76%	0.00%	23.53%
11-15 minutes	0.00%	55.56%	22.22%	11.11%	0.00%	0.00%	11.11%
16-20 minutes	0.00%	57.14%	14.29%	14.29%	0.00%	0.00%	14.29%
21-25 minutes	0.00%	50.00%	25.00%	0.00%	0.00%	0.00%	25.00%
26-30 minutes	0.00%	50.00%	0.00%	25.00%	25.00%	0.00%	0.00%
31-45 minutes	0.00%	37.50%	0.00%	12.50%	12.50%	12.50%	25.00%
46-60 minutes	0.00%	33.33%	0.00%	33.33%	0.00%	0.00%	33.33%
60-75 minutes	0.00%	0.00%	0.00%	50.00%	50.00%	0.00%	0.00%
Do not Work	0.00%	33.33%	8.33%	8.33%	33.33%	0.00%	16.67%



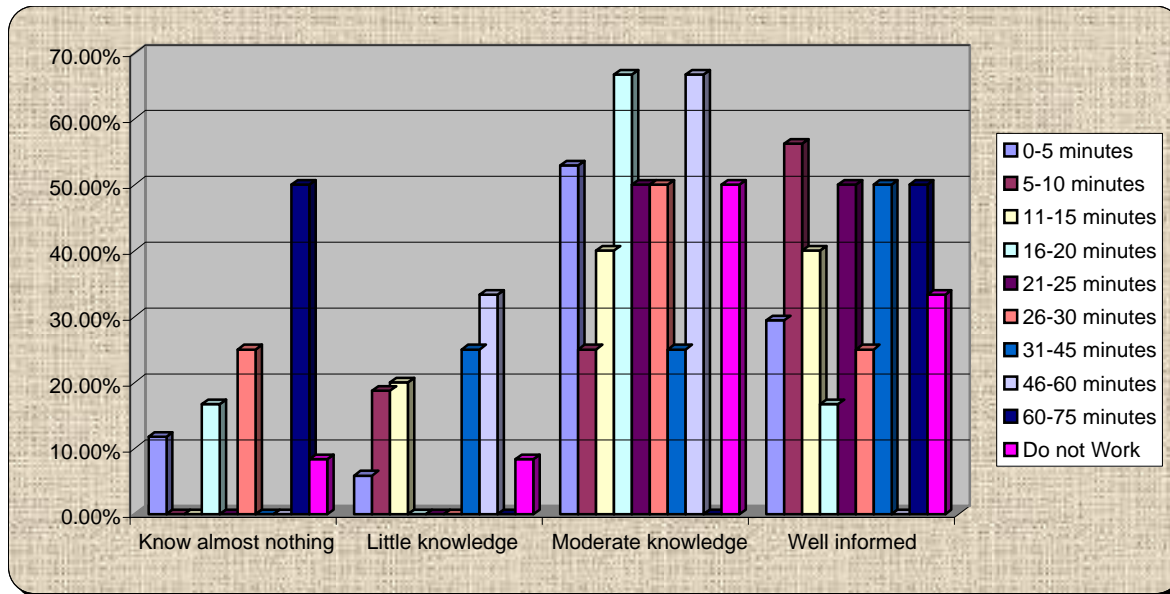
33.) Would you pay the extra money to bypass congestion?

	Yes	No	Unsure	Uninformed
0-5 minutes	81.25%	18.75%	0.00%	0.00%
5-10 minutes	81.25%	6.25%	12.50%	0.00%
11-15 minutes	60.00%	30.00%	10.00%	0.00%
16-20 minutes	66.67%	16.67%	16.67%	0.00%
21-25 minutes	75.00%	0.00%	25.00%	0.00%
26-30 minutes	50.00%	25.00%	25.00%	0.00%
31-45 minutes	100.00%	0.00%	0.00%	0.00%
46-60 minutes	100.00%	0.00%	0.00%	0.00%
60-75 minutes	50.00%	50.00%	0.00%	0.00%
Do not Work	69.23%	30.77%	0.00%	0.00%



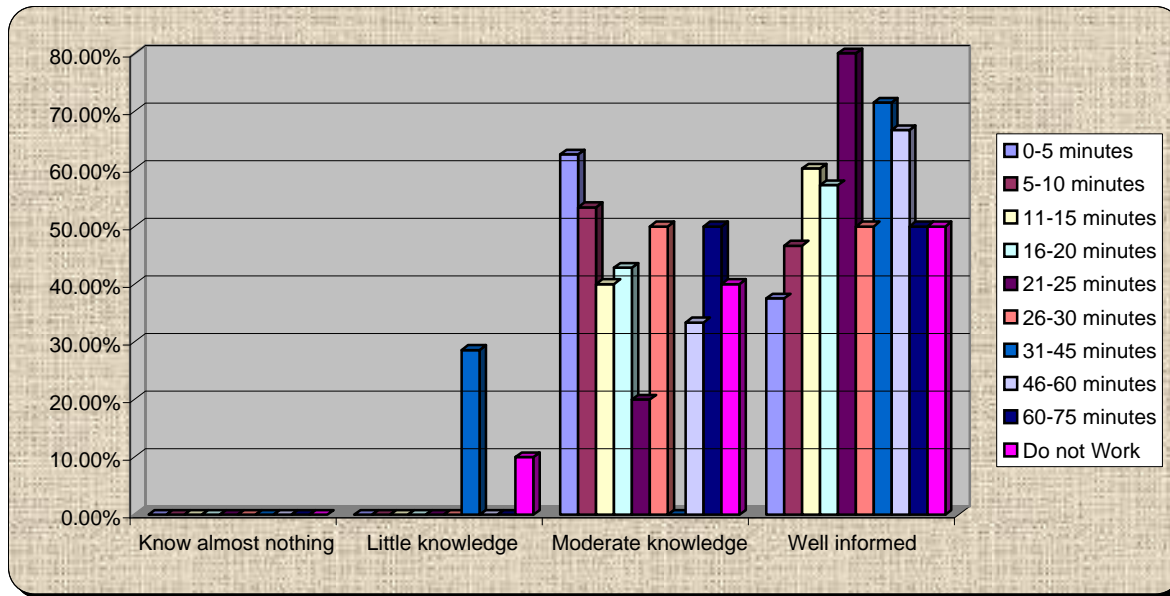
34.) How informed am I about myregion.org? Scale of 1 to 4, 4 well informed and 1 know almost nothing

	Know almost nothing	Little knowledge	Moderate knowledge	Well informed
0-5 minutes	11.76%	5.88%	52.94%	29.41%
5-10 minutes	0.00%	18.75%	25.00%	56.25%
11-15 minutes	0.00%	20.00%	40.00%	40.00%
16-20 minutes	16.67%	0.00%	66.67%	16.67%
21-25 minutes	0.00%	0.00%	50.00%	50.00%
26-30 minutes	25.00%	0.00%	50.00%	25.00%
31-45 minutes	0.00%	25.00%	25.00%	50.00%
46-60 minutes	0.00%	33.33%	66.67%	0.00%
60-75 minutes	50.00%	0.00%	0.00%	50.00%
Do not Work	8.33%	8.33%	50.00%	33.33%



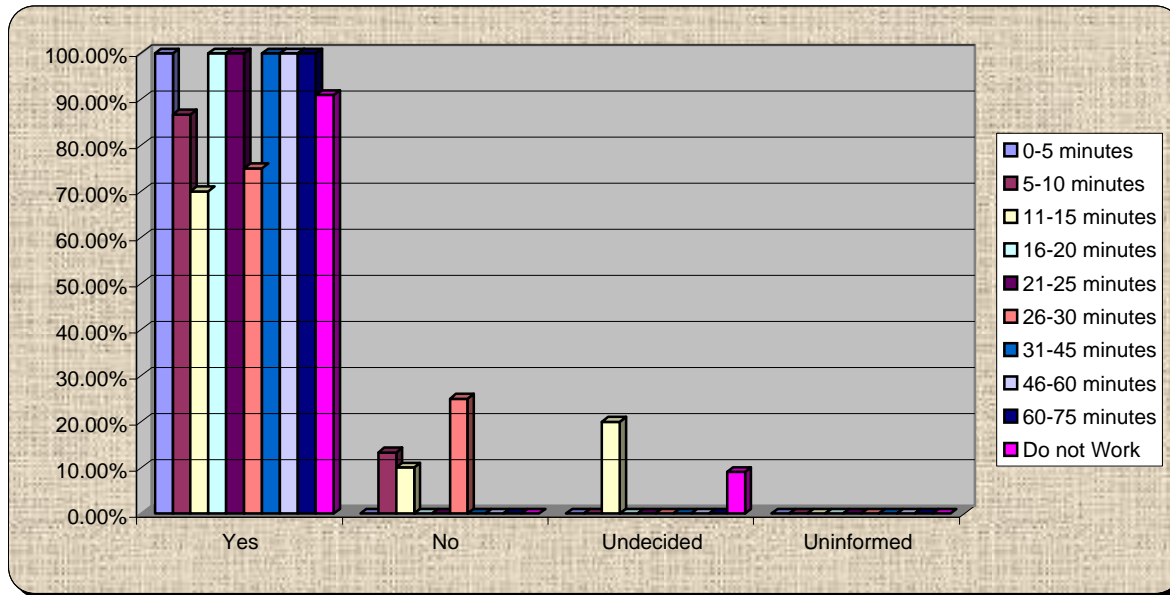
35.) How informed am I about growth planning and priorities in Volusia?

	Know almost nothing	Little knowledge	Moderate knowledge	Well informed
0-5 minutes	0.00%	0.00%	62.50%	37.50%
5-10 minutes	0.00%	0.00%	53.33%	46.67%
11-15 minutes	0.00%	0.00%	40.00%	60.00%
16-20 minutes	0.00%	0.00%	42.86%	57.14%
21-25 minutes	0.00%	0.00%	20.00%	80.00%
26-30 minutes	0.00%	0.00%	50.00%	50.00%
31-45 minutes	0.00%	28.57%	0.00%	71.43%
46-60 minutes	0.00%	0.00%	33.33%	66.67%
60-75 minutes	0.00%	0.00%	50.00%	50.00%
Do not Work	0.00%	10.00%	40.00%	50.00%



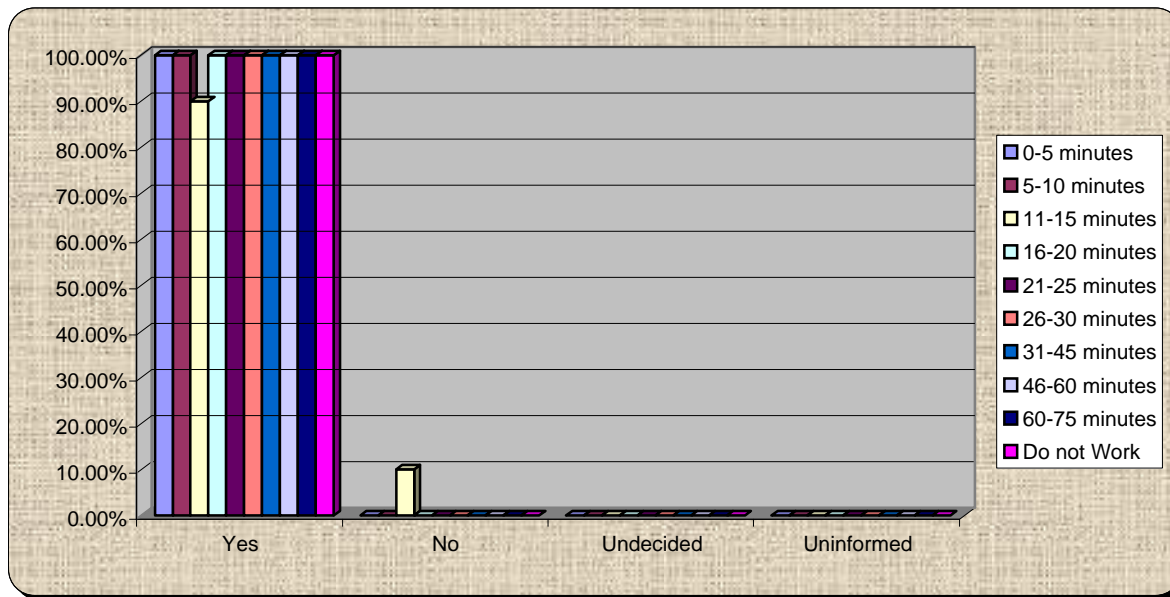
36.) Do you support minimum environmental standards countywide?

	Yes	No	Undecided	Uninformed
0-5 minutes	100.00%	0.00%	0.00%	0.00%
5-10 minutes	86.67%	13.33%	0.00%	0.00%
11-15 minutes	70.00%	10.00%	20.00%	0.00%
16-20 minutes	100.00%	0.00%	0.00%	0.00%
21-25 minutes	100.00%	0.00%	0.00%	0.00%
26-30 minutes	75.00%	25.00%	0.00%	0.00%
31-45 minutes	100.00%	0.00%	0.00%	0.00%
46-60 minutes	100.00%	0.00%	0.00%	0.00%
60-75 minutes	100.00%	0.00%	0.00%	0.00%
Do not Work	90.91%	0.00%	9.09%	0.00%



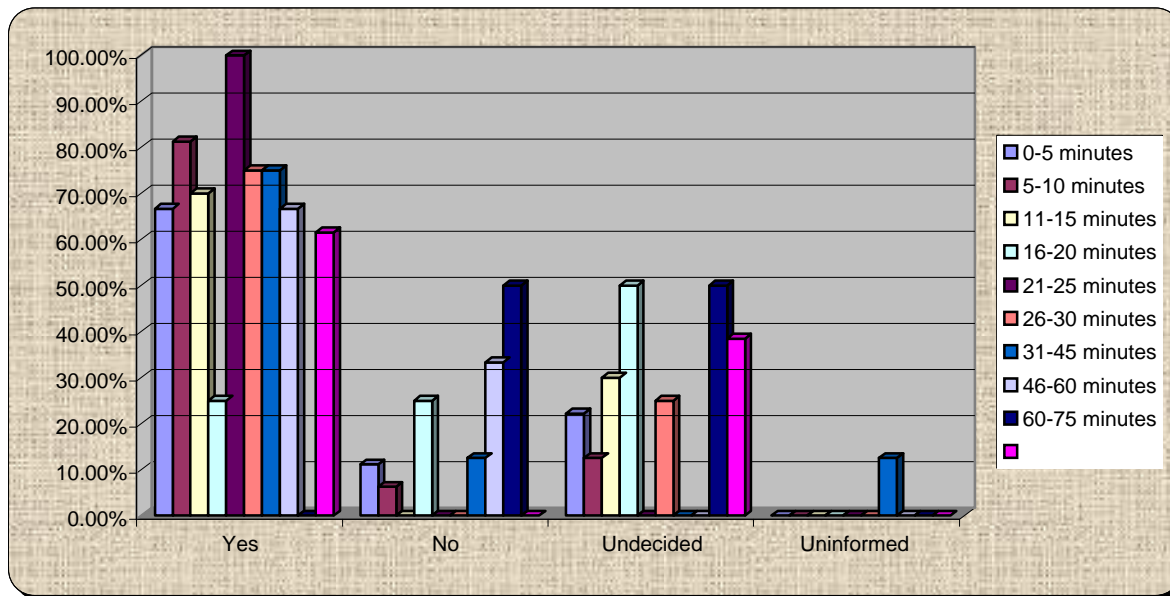
37.) Do you believe protecting natural areas will benefit your quality of life?

	Yes	No	Undecided	Uninformed
0-5 minutes	100.00%	0.00%	0.00%	0.00%
5-10 minutes	100.00%	0.00%	0.00%	0.00%
11-15 minutes	90.00%	10.00%	0.00%	0.00%
16-20 minutes	100.00%	0.00%	0.00%	0.00%
21-25 minutes	100.00%	0.00%	0.00%	0.00%
26-30 minutes	100.00%	0.00%	0.00%	0.00%
31-45 minutes	100.00%	0.00%	0.00%	0.00%
46-60 minutes	100.00%	0.00%	0.00%	0.00%
60-75 minutes	100.00%	0.00%	0.00%	0.00%
Do not Work	100.00%	0.00%	0.00%	0.00%



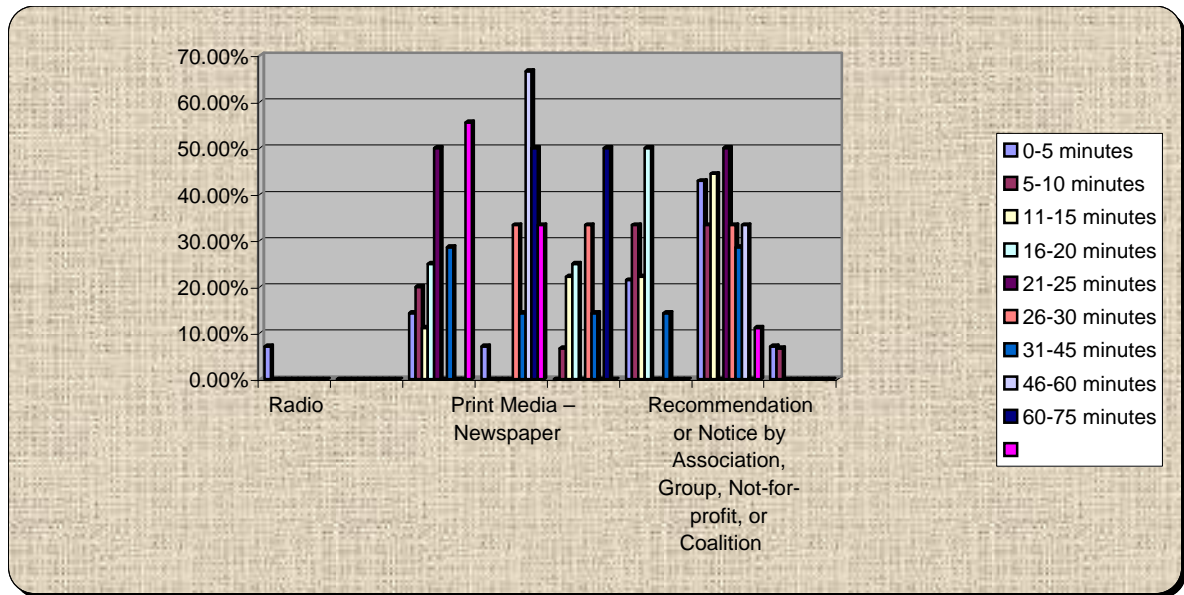
38.) Do you support smart growth tools such as transfer of development rights to protect rural and natural areas?

	Yes	No	Undecided	Uninformed
0-5 minutes	66.67%	11.11%	22.22%	0.00%
5-10 minutes	81.25%	6.25%	12.50%	0.00%
11-15 minutes	70.00%	0.00%	30.00%	0.00%
16-20 minutes	25.00%	25.00%	50.00%	0.00%
21-25 minutes	100.00%	0.00%	0.00%	0.00%
26-30 minutes	75.00%	0.00%	25.00%	0.00%
31-45 minutes	75.00%	12.50%	0.00%	12.50%
46-60 minutes	66.67%	33.33%	0.00%	0.00%
60-75 minutes	0.00%	50.00%	50.00%	0.00%
Do not Work	61.54%	0.00%	38.46%	0.00%



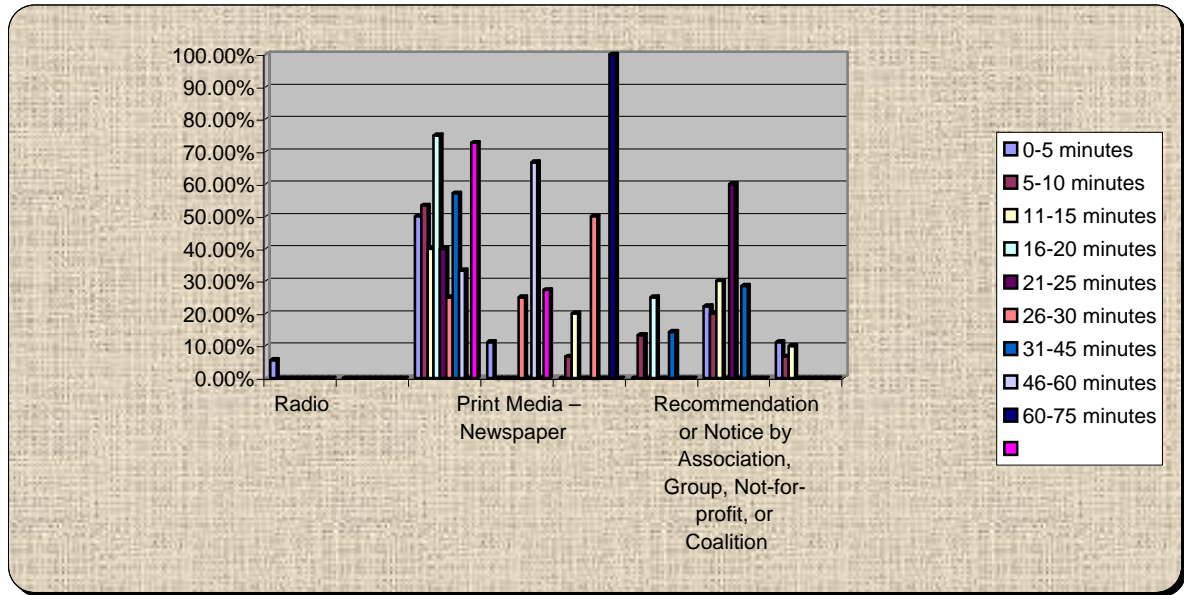
39.) How did you hear about this Summit?

	Radio	TV	Internet	Print Media – Newspaper	Word of Mouth or Phone	Written Invitation	Recommendation or Notice by Association, Group, Not-for-profit, or	Other
0-5 minutes	7.14%	0.00%	14.29%	7.14%	0.00%	21.43%	42.86%	7.14%
5-10 minutes	0.00%	0.00%	20.00%	0.00%	6.67%	33.33%	33.33%	6.67%
11-15 minutes	0.00%	0.00%	11.11%	0.00%	22.22%	22.22%	44.44%	0.00%
16-20 minutes	0.00%	0.00%	25.00%	0.00%	25.00%	50.00%	0.00%	0.00%
21-25 minutes	0.00%	0.00%	50.00%	0.00%	0.00%	0.00%	50.00%	0.00%
26-30 minutes	0.00%	0.00%	0.00%	33.33%	33.33%	0.00%	33.33%	0.00%
31-45 minutes	0.00%	0.00%	28.57%	14.29%	14.29%	14.29%	28.57%	0.00%
46-60 minutes	0.00%	0.00%	0.00%	66.67%	0.00%	0.00%	33.33%	0.00%
60-75 minutes	0.00%	0.00%	0.00%	50.00%	50.00%	0.00%	0.00%	0.00%
Do not Work	0.00%	0.00%	55.56%	33.33%	0.00%	0.00%	11.11%	0.00%



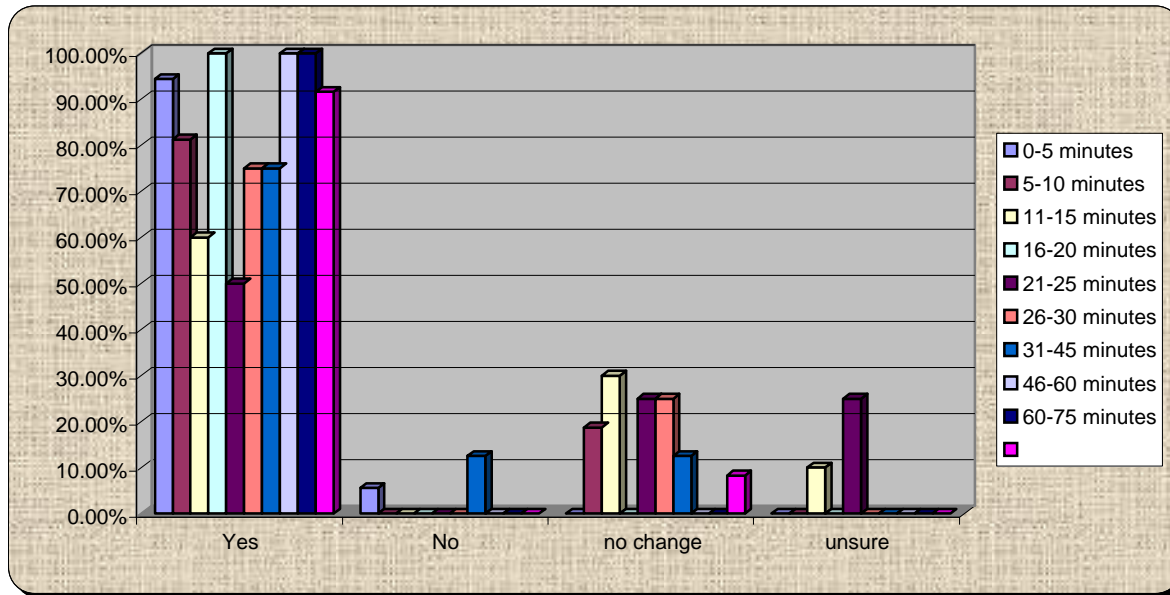
40.) How did you hear about this Summit?

	Radio	TV	Internet	Print Media – Newspaper	Word of Mouth or Phone	Written Invitation	tion or Notice by Association, Group, Not- for-profit, or	Other
0-5 minutes	5.56%	0.00%	50.00%	11.11%	0.00%	0.00%	22.22%	11.11%
5-10 minutes	0.00%	0.00%	53.33%	0.00%	6.67%	13.33%	20.00%	6.67%
11-15 minutes	0.00%	0.00%	40.00%	0.00%	20.00%	0.00%	30.00%	10.00%
16-20 minutes	0.00%	0.00%	75.00%	0.00%	0.00%	25.00%	0.00%	0.00%
21-25 minutes	0.00%	0.00%	40.00%	0.00%	0.00%	0.00%	60.00%	0.00%
26-30 minutes	0.00%	0.00%	25.00%	25.00%	50.00%	0.00%	0.00%	0.00%
31-45 minutes	0.00%	0.00%	57.14%	0.00%	0.00%	14.29%	28.57%	0.00%
46-60 minutes	0.00%	0.00%	33.33%	66.67%	0.00%	0.00%	0.00%	0.00%
60-75 minutes	0.00%	0.00%	0.00%	0.00%	100.00%	0.00%	0.00%	0.00%
Do not Work	0.00%	0.00%	72.73%	27.27%	0.00%	0.00%	0.00%	0.00%



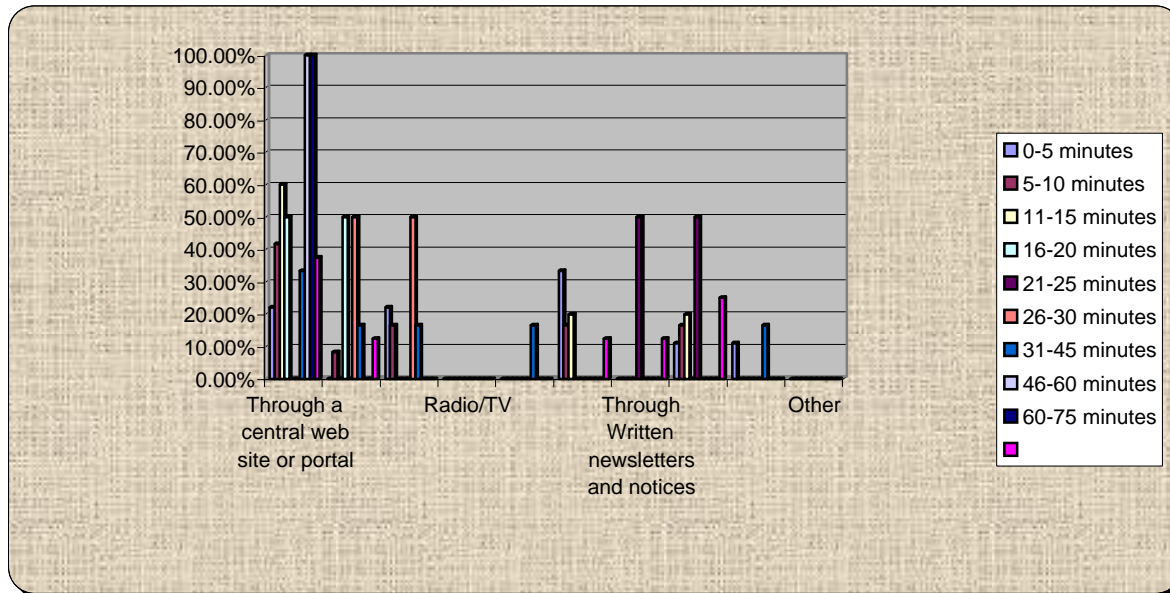
41.) I Feel I have improved access to data and information going forward

	Yes	No	no change	unsure
0-5 minutes	94.44%	5.56%	0.00%	0.00%
5-10 minutes	81.25%	0.00%	18.75%	0.00%
11-15 minutes	60.00%	0.00%	30.00%	10.00%
16-20 minutes	100.00%	0.00%	0.00%	0.00%
21-25 minutes	50.00%	0.00%	25.00%	25.00%
26-30 minutes	75.00%	0.00%	25.00%	0.00%
31-45 minutes	75.00%	12.50%	12.50%	0.00%
46-60 minutes	100.00%	0.00%	0.00%	0.00%
60-75 minutes	100.00%	0.00%	0.00%	0.00%
Do not Work	91.67%	0.00%	8.33%	0.00%



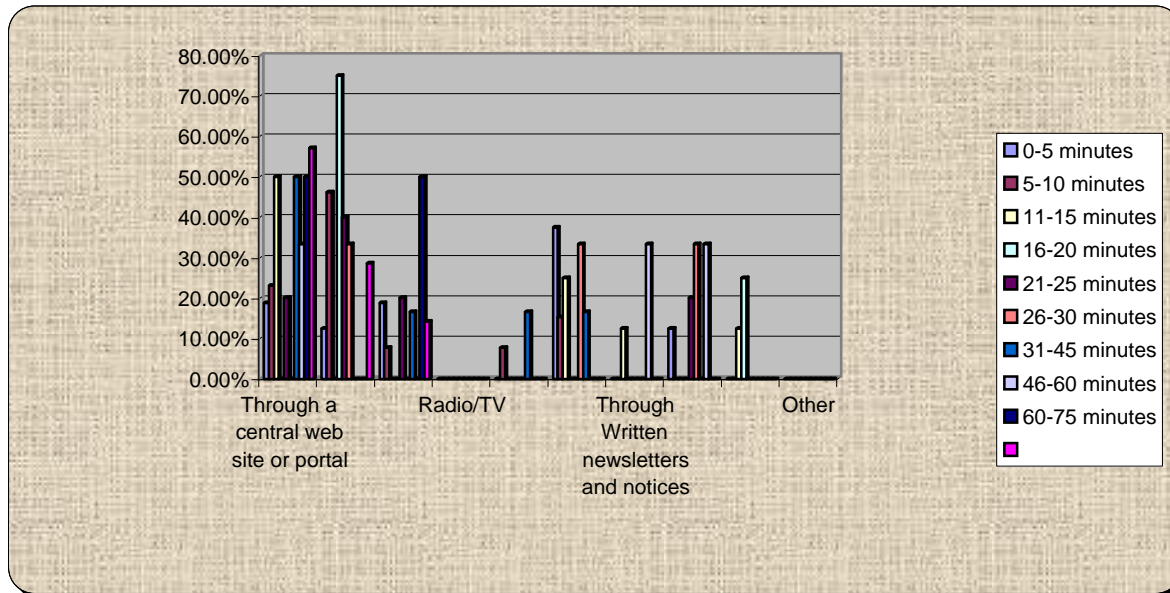
42.) I think the best way to keep up with trends, ideas, and developments regarding Voluisa's growth is:

	Through a central web site or portal	Through general media – electronic	Print media	Radio/TV	Through VCOG Meetings	Through Summits like this	Through Written newsletters and notices	Through all partner, government, and organizational web sites	Through myregion.org	Other
0-5 minutes	22.22%	0.00%	22.22%	0.00%	0.00%	33.33%	0.00%	11.11%	11.11%	0.00%
5-10 minutes	41.67%	8.33%	16.67%	0.00%	0.00%	16.67%	0.00%	16.67%	0.00%	0.00%
11-15 minutes	60.00%	0.00%	0.00%	0.00%	0.00%	20.00%	0.00%	20.00%	0.00%	0.00%
16-20 minutes	50.00%	50.00%	0.00%	0.00%	0.00%	0.00%	0.00%	0.00%	0.00%	0.00%
21-25 minutes	0.00%	0.00%	0.00%	0.00%	0.00%	0.00%	50.00%	50.00%	0.00%	0.00%
26-30 minutes	0.00%	50.00%	50.00%	0.00%	0.00%	0.00%	0.00%	0.00%	0.00%	0.00%
31-45 minutes	33.33%	16.67%	16.67%	0.00%	16.67%	0.00%	0.00%	0.00%	16.67%	0.00%
46-60 minutes	100.00%	0.00%	0.00%	0.00%	0.00%	0.00%	0.00%	0.00%	0.00%	0.00%
60-75 minutes	100.00%	0.00%	0.00%	0.00%	0.00%	0.00%	0.00%	0.00%	0.00%	0.00%
Do not Work	37.50%	12.50%	0.00%	0.00%	0.00%	12.50%	12.50%	25.00%	0.00%	0.00%



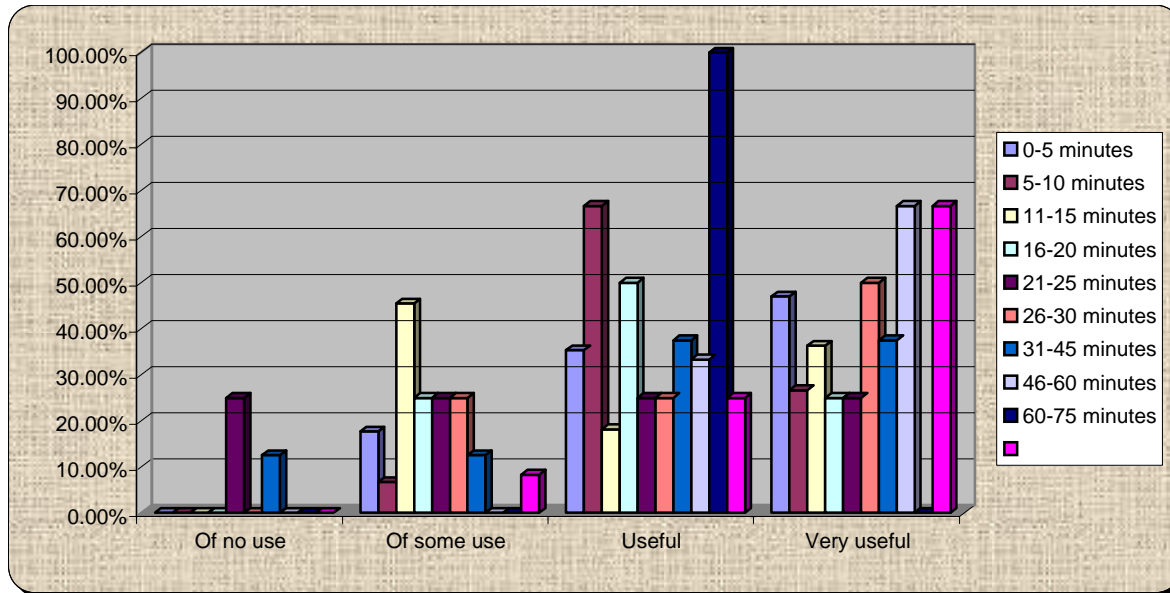
43.) I think the best way to keep up with trends, ideas, and developments regarding Voluisa's growth is:

	Through a central web site or portal	Through general media – electronic	Print media	Radio/TV	Through VCOG Meetings	Through Summits like this	Through Written newsletters and notices	Through all partner, government, and organizational web sites	Through myregion.org	Other
0-5 minutes	18.75%	12.50%	18.75%	0.00%	0.00%	37.50%	0.00%	12.50%	0.00%	0.00%
5-10 minutes	23.08%	46.15%	7.69%	0.00%	7.69%	15.38%	0.00%	0.00%	0.00%	0.00%
11-15 minutes	50.00%	0.00%	0.00%	0.00%	0.00%	25.00%	12.50%	0.00%	12.50%	0.00%
16-20 minutes	0.00%	75.00%	0.00%	0.00%	0.00%	0.00%	0.00%	0.00%	25.00%	0.00%
21-25 minutes	20.00%	40.00%	20.00%	0.00%	0.00%	0.00%	0.00%	20.00%	0.00%	0.00%
26-30 minutes	0.00%	33.33%	0.00%	0.00%	0.00%	33.33%	0.00%	33.33%	0.00%	0.00%
31-45 minutes	50.00%	0.00%	16.67%	0.00%	16.67%	16.67%	0.00%	0.00%	0.00%	0.00%
46-60 minutes	33.33%	0.00%	0.00%	0.00%	0.00%	0.00%	33.33%	33.33%	0.00%	0.00%
60-75 minutes	50.00%	0.00%	50.00%	0.00%	0.00%	0.00%	0.00%	0.00%	0.00%	0.00%
Do not Work	57.14%	28.57%	14.29%	0.00%	0.00%	0.00%	0.00%	0.00%	0.00%	0.00%



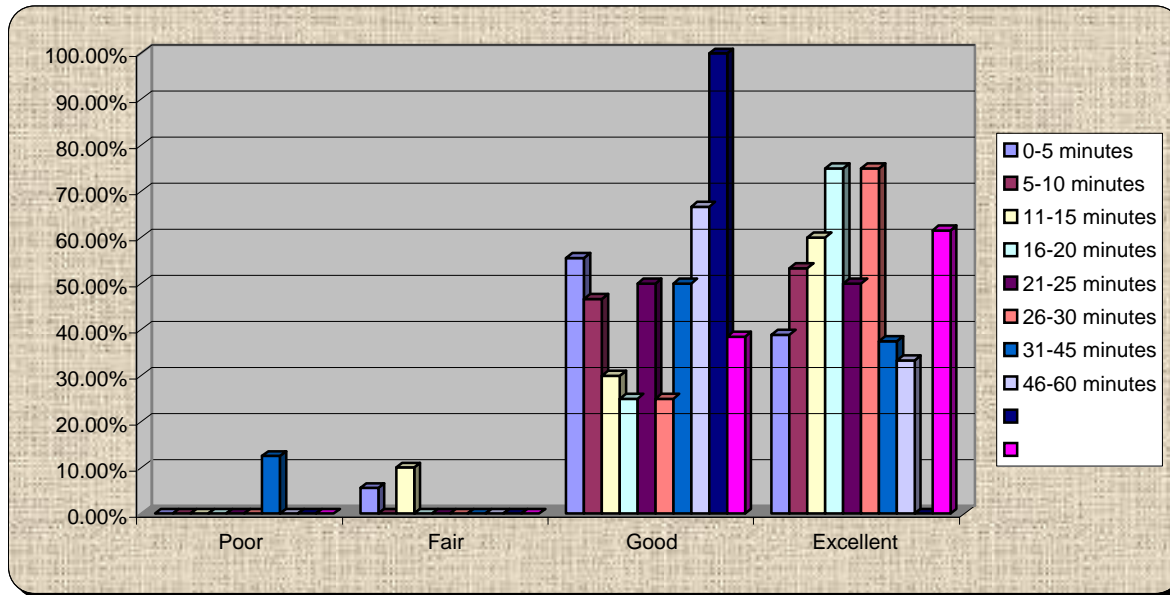
44.) For me personally - The data, information, and updates provided in this summit were:

	Of no use	Of some use	Useful	Very useful
0-5 minutes	0.00%	17.65%	35.29%	47.06%
5-10 minutes	0.00%	6.67%	66.67%	26.67%
11-15 minutes	0.00%	45.45%	18.18%	36.36%
16-20 minutes	0.00%	25.00%	50.00%	25.00%
21-25 minutes	25.00%	25.00%	25.00%	25.00%
26-30 minutes	0.00%	25.00%	25.00%	50.00%
31-45 minutes	12.50%	12.50%	37.50%	37.50%
46-60 minutes	0.00%	0.00%	33.33%	66.67%
60-75 minutes	0.00%	0.00%	100.00%	0.00%
Do not Work	0.00%	8.33%	25.00%	66.67%



45.) As a team, Speakers, panelists, and facilitators were:

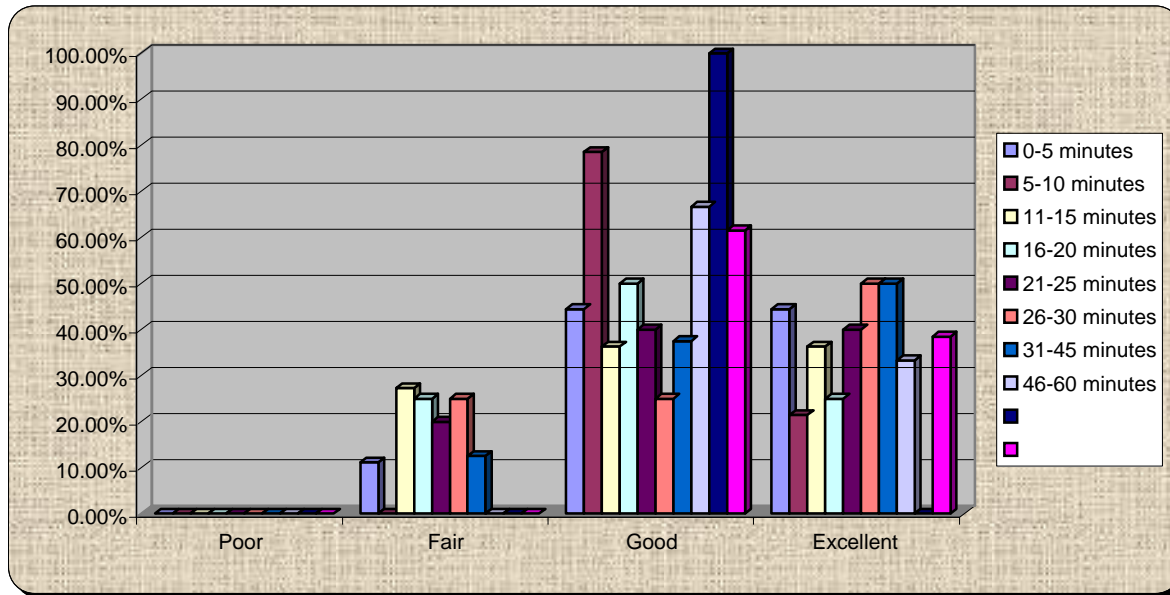
	Poor	Fair	Good	Excellent
0-5 minutes	0.00%	5.56%	55.56%	38.89%
5-10 minutes	0.00%	0.00%	46.67%	53.33%
11-15 minutes	0.00%	10.00%	30.00%	60.00%
16-20 minutes	0.00%	0.00%	25.00%	75.00%
21-25 minutes	0.00%	0.00%	50.00%	50.00%
26-30 minutes	0.00%	0.00%	25.00%	75.00%
31-45 minutes	12.50%	0.00%	50.00%	37.50%
46-60 minutes	0.00%	0.00%	66.67%	33.33%
60-75 minutes	0.00%	0.00%	100.00%	0.00%
Do not Work	0.00%	0.00%	38.46%	61.54%



46.) Workshops were:

0-5 minutes
 5-10 minutes
 11-15 minutes
 16-20 minutes
 21-25 minutes
 26-30 minutes
 31-45 minutes
 46-60 minutes
 60-75 minutes
 Do not Work

	Poor	Fair	Good	Excellent
0-5 minutes	0.00%	11.11%	44.44%	44.44%
5-10 minutes	0.00%	0.00%	78.57%	21.43%
11-15 minutes	0.00%	27.27%	36.36%	36.36%
16-20 minutes	0.00%	25.00%	50.00%	25.00%
21-25 minutes	0.00%	20.00%	40.00%	40.00%
26-30 minutes	0.00%	25.00%	25.00%	50.00%
31-45 minutes	0.00%	12.50%	37.50%	50.00%
46-60 minutes	0.00%	0.00%	66.67%	33.33%
60-75 minutes	0.00%	0.00%	100.00%	0.00%
Do not Work	0.00%	0.00%	61.54%	38.46%



47.) How did you hear about this Summit?

	Radio	TV	Internet Web site driven	Internet email from event	Internet email from colleagues	Print Media – Newspaper	Word of Mouth or Phone	Written Invitation	recommendation or Notice by Association, Group, Not-for-profit, or	Other
0-5 minutes	11.11%	0.00%	0.00%	27.78%	27.78%	11.11%	0.00%	0.00%	22.22%	0.00%
5-10 minutes	0.00%	0.00%	6.67%	46.67%	13.33%	0.00%	0.00%	6.67%	13.33%	13.33%
11-15 minutes	9.09%	0.00%	0.00%	18.18%	27.27%	0.00%	18.18%	0.00%	9.09%	18.18%
16-20 minutes	0.00%	0.00%	25.00%	0.00%	50.00%	0.00%	0.00%	25.00%	0.00%	0.00%
21-25 minutes	0.00%	0.00%	0.00%	50.00%	0.00%	0.00%	0.00%	0.00%	50.00%	0.00%
26-30 minutes	0.00%	0.00%	0.00%	0.00%	33.33%	33.33%	33.33%	0.00%	0.00%	0.00%
31-45 minutes	0.00%	0.00%	0.00%	37.50%	12.50%	0.00%	12.50%	12.50%	25.00%	0.00%
46-60 minutes	0.00%	0.00%	0.00%	33.33%	0.00%	66.67%	0.00%	0.00%	0.00%	0.00%
60-75 minutes	0.00%	0.00%	0.00%	0.00%	0.00%	50.00%	50.00%	0.00%	0.00%	0.00%
Do not Work	0.00%	0.00%	8.33%	58.33%	8.33%	25.00%	0.00%	0.00%	0.00%	0.00%

